

# KEOLA TWO DEPARTURE

SL-754 (FAA)

PAC: 03 JAN 2019 to 28 FEB 2019

## DEPARTURE ROUTE DESCRIPTION

Turn right/left to heading assigned by the Tower, expect vectors to KEOLA INT, maintain 5000'; then via transitions. Expect clearance to enroute altitude/flight level at KEOLA INT.

**KATHS TRANSITION (KEOLA2.KATHS):** From over KEOLA via HNL R-258 and SOK R-234 to KATHS INT.

**IHUE TRANSITION (KEOLA2.IHUE):** From over KEOLA via SOK R-111 and LH R-148 to LH VORTAC.

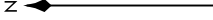
**ILIIA TRANSITION (KEOLA2.ILIIA):** From over KEOLA via RNAV course 282° to ILIIA WP.

**NONNI TRANSITION (KEOLA2.NONNI):** From over KEOLA via HNL R-258 to NONNI INT.

**PUPPI TRANSITION (KEOLA2.PUPPI):** From over KEOLA via RNAV course 271° to PUPPI WP.

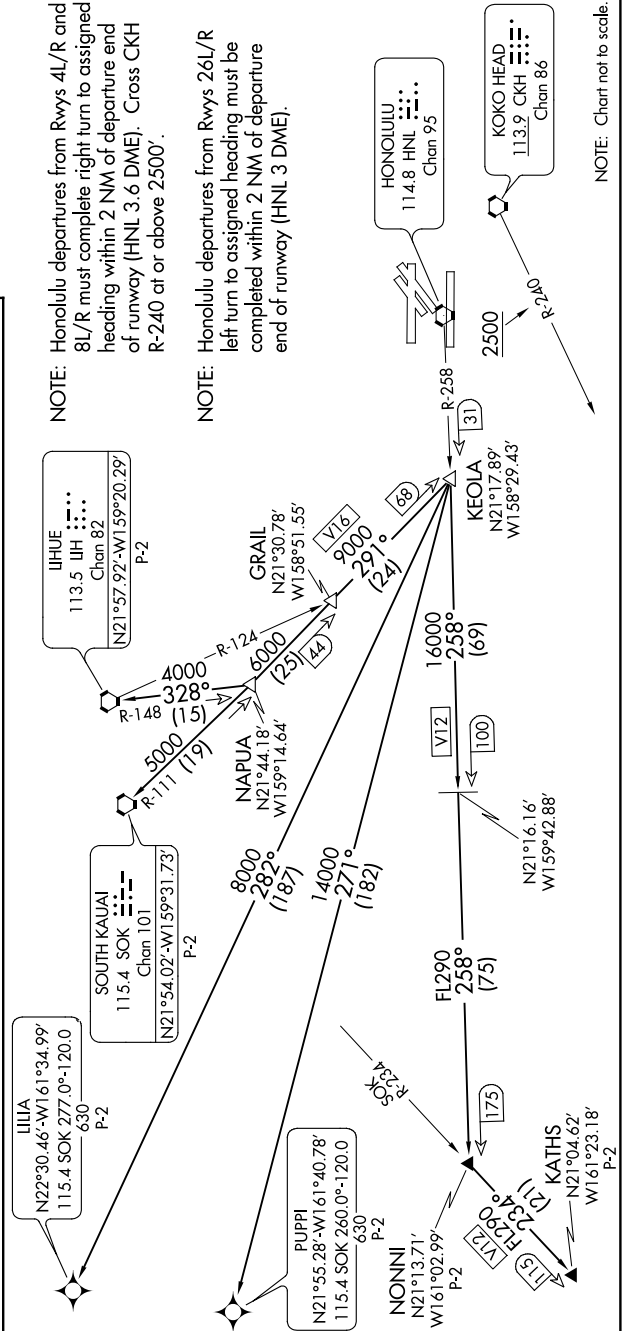
**SOUTH KAUAI TRANSITION (KEOLA2.SOK):** From over KEOLA via SOK R-111 to SOK VORTAC.

D-ATIS  
127.9 251.15  
CINC DEL  
121.4 281.4  
GND CON  
121.9 348.6  
HONOLULU TOWER  
118.1 257.8  
123.9 273.575 (Rwy 8R/26L)  
HCF APPROACH  
118.3 269.0



NOTE: Honolulu departures from Rwy 4L/R and 8L/R must complete right turn to assigned heading within 2 NM of departure end of runway (HNL 3.6 DME). Cross CKH R-240 at or above 2500'.

NOTE: Honolulu departures from Rwy 26L/R left turn to assigned heading must be completed within 2 NM of departure end of runway (HNL 3 DME).



# KEOLA TWO DEPARTURE

PAC: 03 JAN 2019 to 28 FEB 2019