

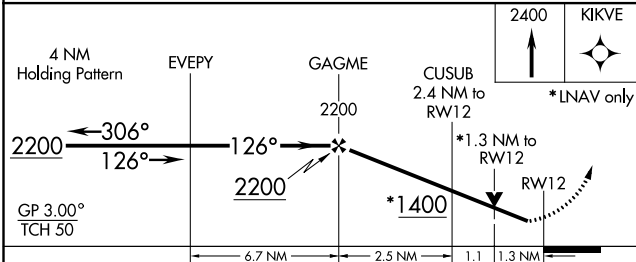
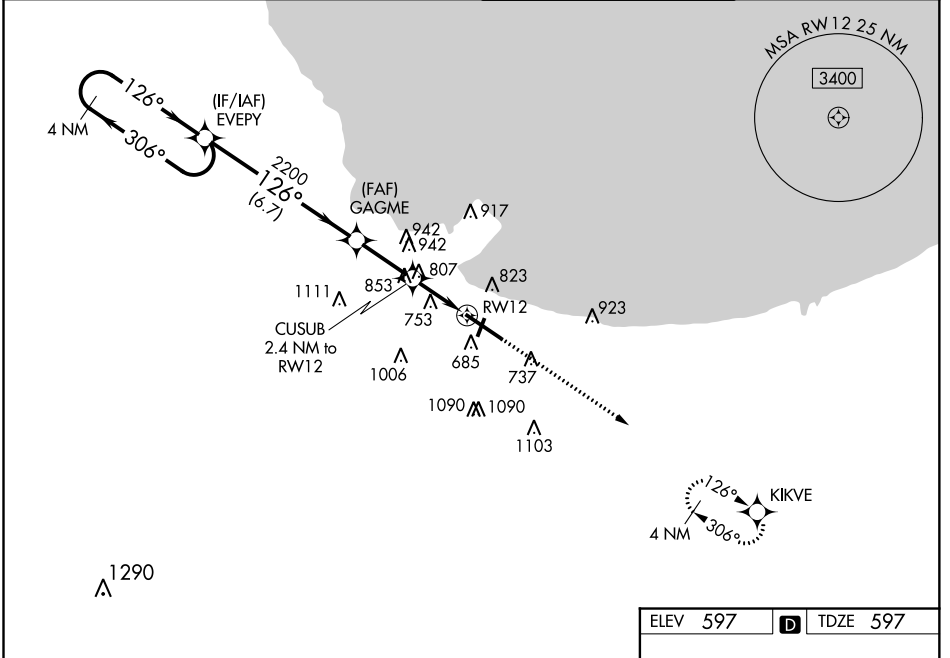
WAAS CH 70623 W12A	APP CRS 126°	Rwy Idg TDZE Apt Elev	7959 597 597
--	------------------------	-----------------------------	---

RNAV (GPS) Y RWY 12

GARY/CHICAGO INTL (GYY)

<p>▽ ▲</p>	<p>For uncompensated Baro-VNAV systems, LNAV/VNAV NA below -16°C (4°F) or above 54°C (130°F). DME/DME RNP-0.3 NA. Rwy 12 helicopter visibility reduction below ¾ SM NA.</p>	<p>MISSED APPROACH: Climb to 2400 direct KIKVE and hold.</p>
------------------------------	---	--

<p>ATIS 134.575</p>	<p>CHICAGO APP CON 133.1 285.6</p>	<p>GARY TOWER * 125.6 (CTAF) 0</p>	<p>GND CON 121.9</p>
--------------------------------	---	---	---------------------------------



ELEV 597	TDZE 597
----------	----------

REIL Rwy 2, 12 and 20
HIRL Rwy 12-30
MIRL Rwy 2-20

CATEGORY	A	B	C	D
LPV DA		797- ³ / ₄	200 (200- ³ / ₄)	
LNAV/VNAV DA		1049-1 ³ / ₈	452 (500-1 ³ / ₈)	
LNAV MDA	1060-1	463 (500-1)	1060-1 ³ / ₈	463 (500-1 ³ / ₈)
C CIRCLING	1140-1 543 (600-1)	1180-1 583 (600-1)	1400-2 ¹ / ₄ 803 (900-2 ¹ / ₄)	1420-2 ³ / ₄ 823 (900-2 ³ / ₄)

EC-2, 31 JAN 2019 to 28 FEB 2019

EC-2, 31 JAN 2019 to 28 FEB 2019