


LOC/DME I-GYY 108.75 Chan 24 (Y)	APP CRS 306°	Rwy Idg 7959 TDZE 591 Apt Elev 597
--	------------------------	---

ILS or LOC RWY 30

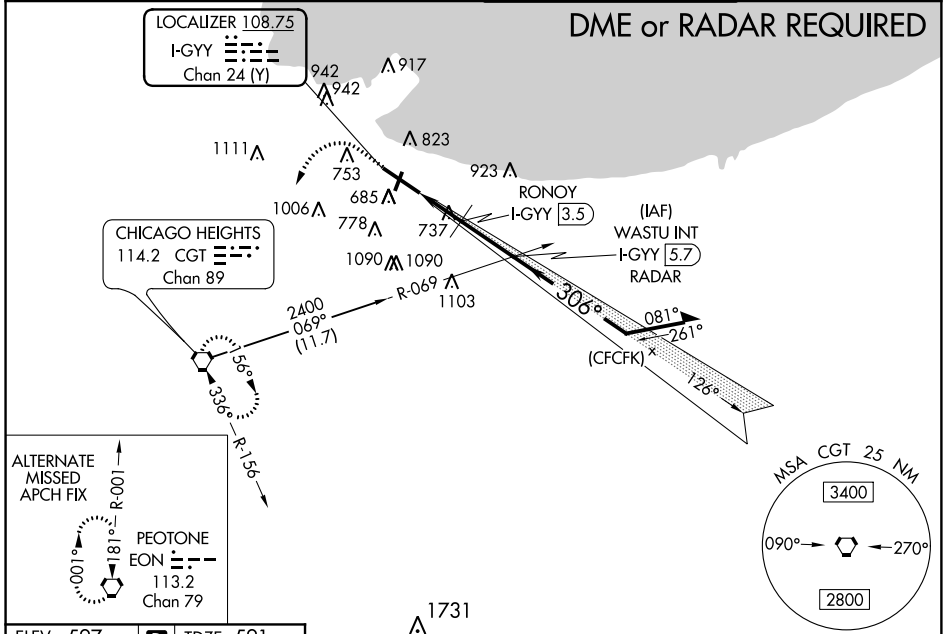
GARY/CHICAGO INTL (GYY)

⚠ When local altimeter setting not received, use Chicago Midway Intl altimeter setting and increase all DA 46 feet and all MDA 60 feet, increase S-LOC 30 Cat C/D visibility to 1½ miles, increase Circling Cat C/D and RONOY fix minimums Circling Cat C/D visibility ¼ mile. VDP NA with Chicago Midway Intl altimeter setting. **RVR 1800 authorized with use of FD or AP or HUD to DA, NA when using Chicago Midway Intl.

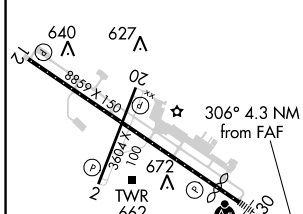
MALSR 

MISSED APPROACH: Climb to 1500 then climbing left turn to 2400 direct CGT VORTAC and hold.

ATIS 134.575	CHICAGO APP CON 133.1 285.6	GARY TOWER * 125.6 (CTAF) 0	GND CON 121.9
------------------------	---------------------------------------	---------------------------------------	-------------------------



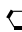
ELEV 597	D	TDZE 591
----------	----------	----------



REIL Rwy 2, 12 and 20 **Ⓛ**
HIRL Rwy 12-30 **Ⓛ**
MIRL Rwy 2-20 **Ⓛ**

FAF to MAP 4.3 NM

Knots	60	90	120	150	180
Min:Sec	4:18	2:52	2:09	1:43	1:26

1500	2400	CGT
↑	↙	
# Increase to 1300 when using Chicago Midway Intl altimeter setting.		
*LOC only.		
WASTU INT I-GYY 5.7 RADAR		
RONOY I-GYY 3.5		
I-GYY 1.5		
I-GYY 2.6		
*1240#		
2000		
2400		
126°		
306°		
Remain within 10 NM		
GS 3.00° TCH 57		
1.1 NM 0.9 NM 2.3 NM		

CATEGORY	A	B	C	D
S-ILS 30**	791/24 200 (200-½)			
S-LOC 30	1240/24	649 (700-½)	1240-1¾	649 (700-1¾)
C CIRCLING	1240-1	643 (700-1)	1400-2¼	1420-2¾
			803 (900-2¼)	823 (900-2¾)
RONOY FIX MINIMUMS				
S-LOC 30	1000/24	409 (500-½)	1000/40	409 (500-¾)
C CIRCLING	1140-1	1180-1	1400-2¼	1420-2¾
	543 (600-1)	583 (600-1)	803 (900-2¼)	823 (900-2¾)