

PENSACOLA, FLORIDA

# TACAN RWY 25L

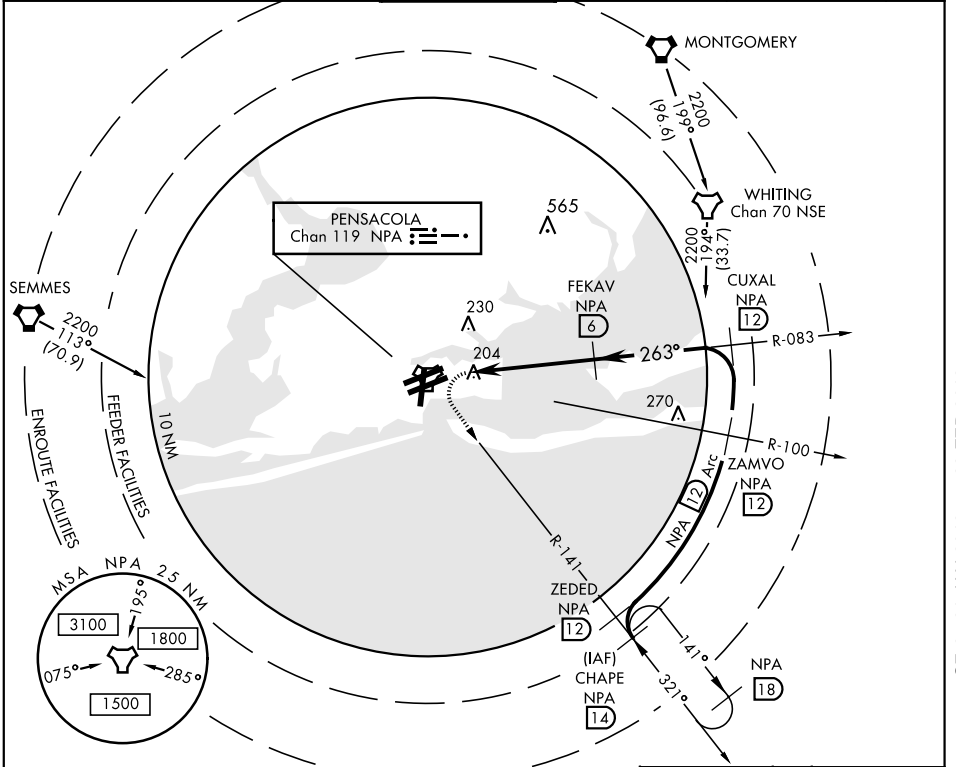
TACAN NPA Chan 119	APCH CRS 263°	Rwy ldg THRE Arpt Elev 8001 15 28
-----------------------	------------------	--

AL-736 [USN]

PENSACOLA NAS (FORREST SHERMAN FLD) (KNPA)

MISSED APPROACH: Climbing left turn to 2200 via NPA TACAN R-141 to CHAPE and hold.

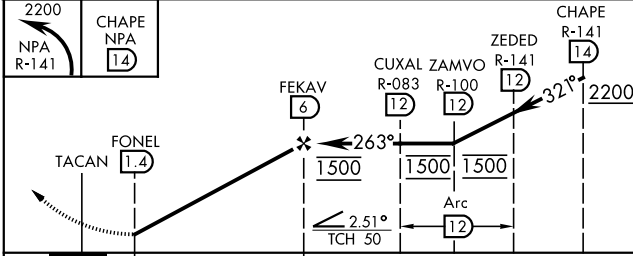
ATIS 124.35 266.8	PENSACOLA APP CON 120.65 270.8	SHERMAN TOWER 120.7 340.2	GND CON 121.7 336.4	CLNC DEL 134.1 268.7	ASR/ PAR
----------------------	-----------------------------------	------------------------------	------------------------	-------------------------	-------------



SE-3, 31 JAN 2019 to 28 FEB 2019

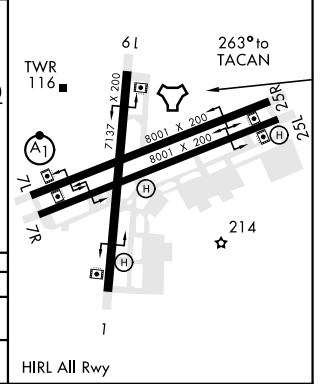
SE-3, 31 JAN 2019 to 28 FEB 2019

EMERG SAFE ALT 100 NM 3100



ELEV 28	THRE 15
---------	---------

CATEGORY	A	B	C	D
S-25L	460-1 445 (500-1)	460-1 3/8 445 (500-1 3/8)		
CIRCLING	520-1 492 (500-1)	520-1 1/2 492 (500-1 1/2)	580-2 552 (600-2)	



PENSACOLA, FLORIDA 30°21'N-87°19'W PENSACOLA NAS (FORREST SHERMAN FLD) (KNPA)

Amdt 4 11DEC14

# TACAN RWY 25L