

PENSACOLA, FLORIDA

TACAN RWY 19

TACAN NPA Chan 119	APCH CRS 171°	Rwy ldg THRE 16 Arprt Elev 28
------------------------------	-------------------------	---

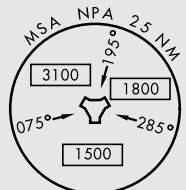
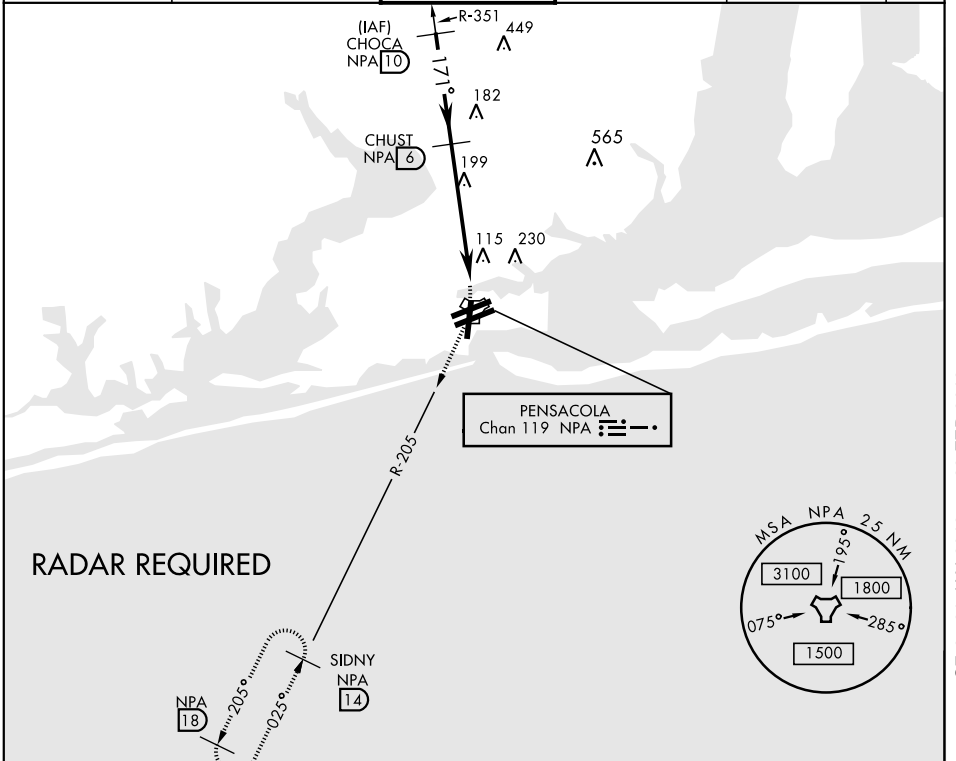
AL-736 [USN]

PENSACOLA NAS (FORREST SHERMAN FLD) (KNPA)

CAUTION: intmed seg len is 4.0 NM.

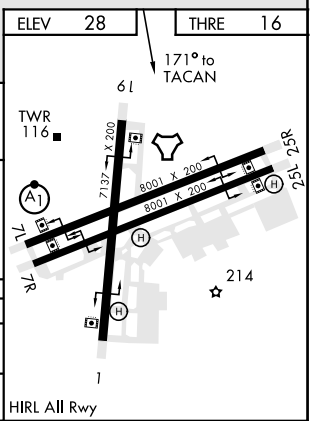
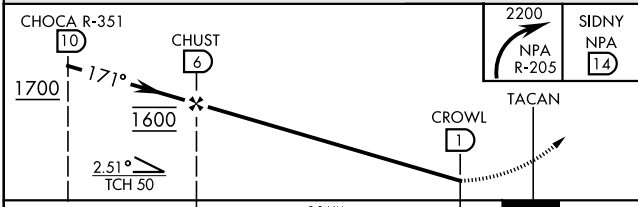
MISSED APPROACH: Climbing right turn to 2200 via NPA TACAN R-205 to SIDNY and hold.

ATIS 124.35 266.8	PENSACOLA APP CON 120.65 270.8	SHERMAN TOWER 120.7 340.2	GND CON 121.7 336.4	CLNC DEL 134.1 268.7	ASR/ PAR
-----------------------------	--	-------------------------------------	-------------------------------	--------------------------------	-------------



EMERG SAFE ALT 100 NM 3100

ELEV 28	THRE 16
---------	---------



CATEGORY	A	B	C	D
S-19	500-1 484 (500-1)		500-1 ³ / ₈ 484 (500-1 ³ / ₈)	
CIRCLING	520-1 492 (500-1)		520-1 ¹ / ₂ 492 (500-1 ¹ / ₂)	580-2 552 (600-2)

PENSACOLA, FLORIDA 30°21'N-87°19'W PENSACOLA NAS (FORREST SHERMAN FLD) (KNPA)

Amdt 3 11DEC14

TACAN RWY 19

SE-3, 31 JAN 2019 to 28 FEB 2019

SE-3, 31 JAN 2019 to 28 FEB 2019