

PENSACOLA, FLORIDA

RNAV (GPS) RWY 25R

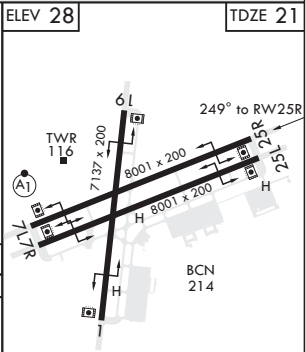
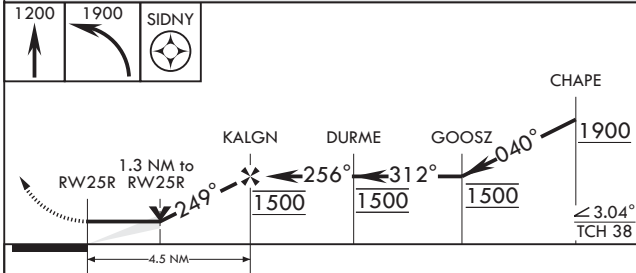
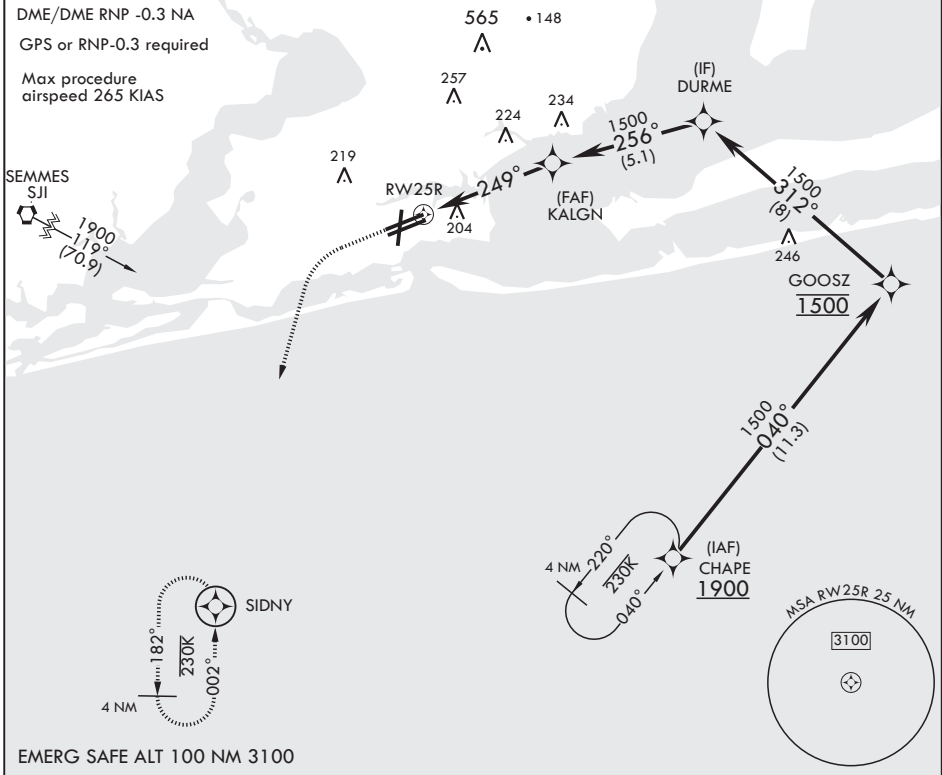
APCH CRS	Rwy Idg	8001
249°	TDZE	21
	Arprt Elev	28

AL-736 (USN)

PENSACOLA NAS (FORREST SHERMAN FLD) (KNPA)

MISSED APPROACH: Climb to 1200 then climbing left turn to 1900 direct SIDNY and hold. Max missed approach speed 265 KIAS.

ATIS	APP CON	SHERMAN TOWER	GND CON	SHERMAN CLNC DEL	ASR/PAR
124.35 266.8	120.05 270.8	120.7 340.2	121.7 336.4	134.1 268.7	



CATEGORY	A	B	C	D	E
LNAV MDA	460-1 439 (500-1)		460-1 ¼ 439 (500-1 ¼)	460-1 ½ 439 (500-1 ½)	
C CIRCLING	520-1 492 (500-1)		540-1 ½ 512 (600-1 ½)	580-2 552 (600-2)	

PENSACOLA, FLORIDA

30°21'N - 87°19'W PENSACOLA NAS (FORREST SHERMAN FLD) (KNPA)

Amdt 4 29MAR18

RNAV (GPS) RWY 25R

SE-3, 31 JAN 2019 to 28 FEB 2019

SE-3, 31 JAN 2019 to 28 FEB 2019