


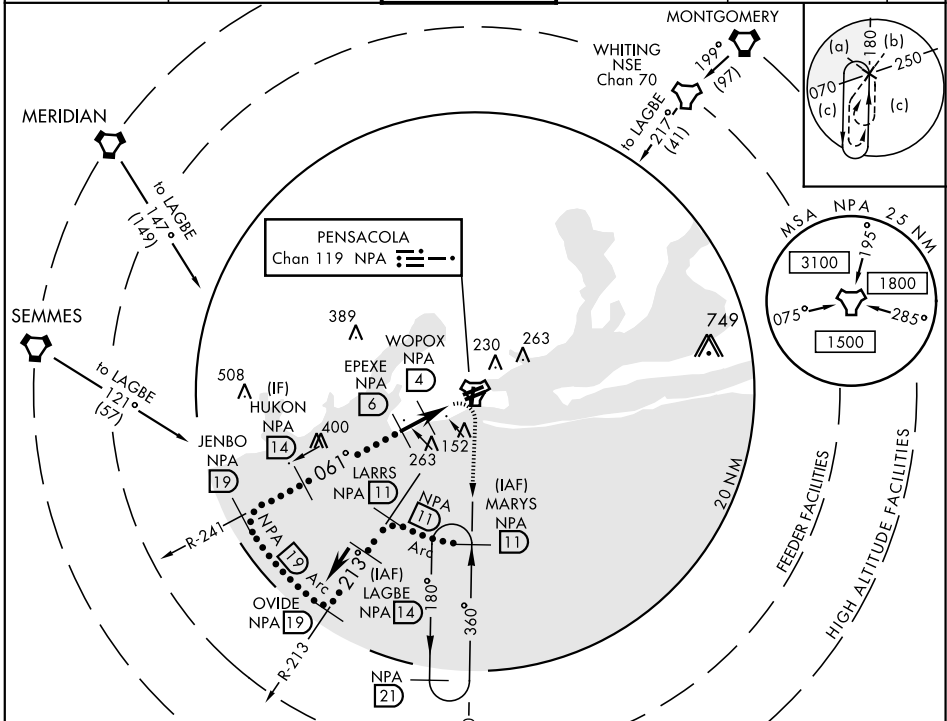
# HI-TACAN RWY 7L

TACAN NPA Chan <b>119</b>	APCH CRS <b>061°</b>	Rwy Idg THRE Arprt Elev <b>8001</b> <b>24</b> <b>28</b>	JAL-736 [USN] PENSACOLA NAS (FORREST SHERMAN FLD) (KNPA)
------------------------------	-------------------------	--	--

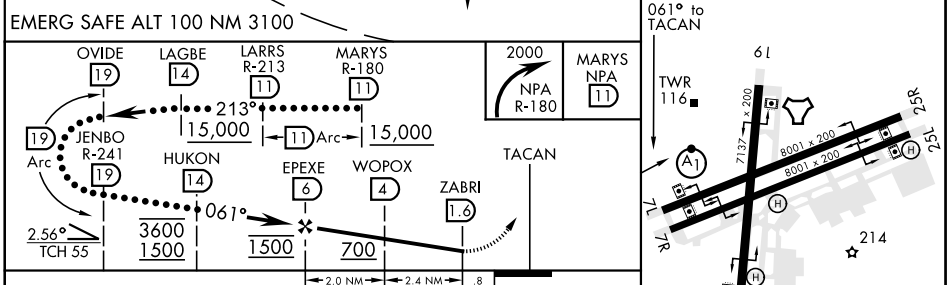
\* When ALS inop, increase CAT CDE vis to 1 1/2 miles.

ALS-F-1  MISSED APPROACH: Climbing right turn to 2000 via NPA TACAN R-180 to MARYS and hold.

ATIS <b>124.35 266.8</b>	PENSACOLA APP CON <b>120.65 270.8</b>	SHERMAN TOWER <b>120.7 340.2</b>	GND CON <b>121.7 336.4</b>	CLNC DEL <b>134.1 268.7</b>	ASR/PAR
-----------------------------	--	-------------------------------------	-------------------------------	--------------------------------	---------



ELEV	28	THRE	24
------	----	------	----



CATEGORY	C	D	E
S-7L*	440-3/4	416	(500-3/4)
CIRCLING	520-1 1/2 492 (500-1 1/2)	580-2 552 (600-2)	600-2 572 (600-2)

HIRL All Rwy

# HI-TACAN RWY 7L

SE-3, 31 JAN 2019 to 28 FEB 2019

SE-3, 31 JAN 2019 to 28 FEB 2019