

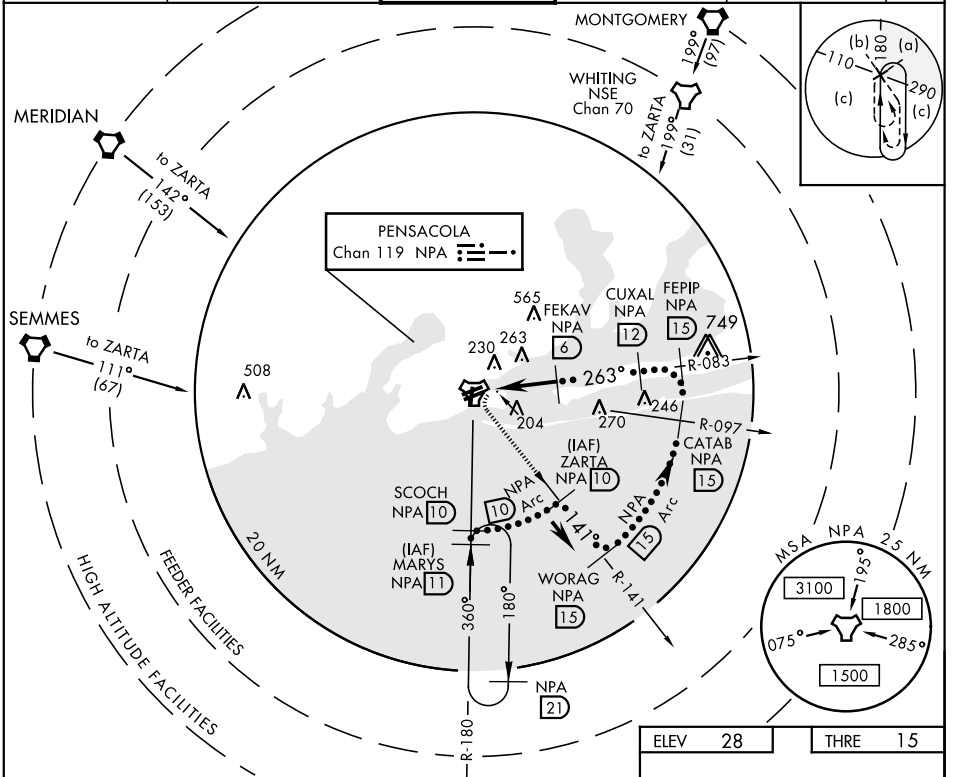
PENSACOLA, FLORIDA

# HI-TACAN RWY 25L

TACAN NPA Chan <b>119</b>	APCH CRS <b>263°</b>	Rwy Idg THRE <b>15</b> Arpt Elev <b>28</b>	JAL-736 [USN] PENSACOLA NAS (FORREST SHERMAN FLD) (KNPA)
------------------------------	-------------------------	--	--

MISSED APPROACH: Climbing left turn to 2000 via NPA TACAN R-141 to ZARTA.

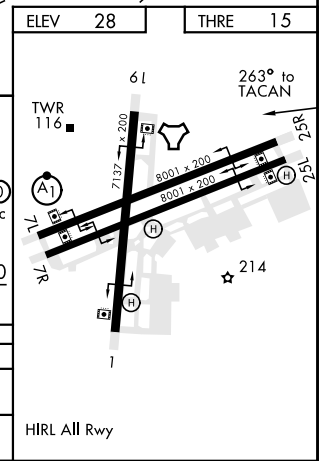
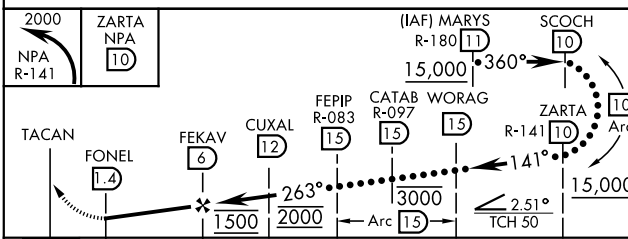
ATIS <b>124.35 266.8</b>	PENSACOLA APP CON <b>120.65 270.8</b>	SHERMAN TOWER <b>120.7 340.2</b>	GND CON <b>121.7 336.4</b>	CLNC DEL <b>134.1 268.7</b>	ASR/ PAR
-----------------------------	--	-------------------------------------	-------------------------------	--------------------------------	-------------



SE-3, 31 JAN 2019 to 28 FEB 2019

SE-3, 31 JAN 2019 to 28 FEB 2019

EMERG SAFE ALT 100 NM 3100



CATEGORY	C	D	E
S-25L	460-1 $\frac{3}{8}$	445 (500-1 $\frac{3}{8}$ )	
CIRCLING	520-1 $\frac{1}{2}$ 492 (500-1 $\frac{1}{2}$ )	580-2 552 (600-2)	600-2 572 (600-2)

PENSACOLA, FLORIDA 30°21'N-87°19'W PENSACOLA NAS (FORREST SHERMAN FLD) (KNPA)

Amdt 4 11DEC14

# HI-TACAN RWY 25L

