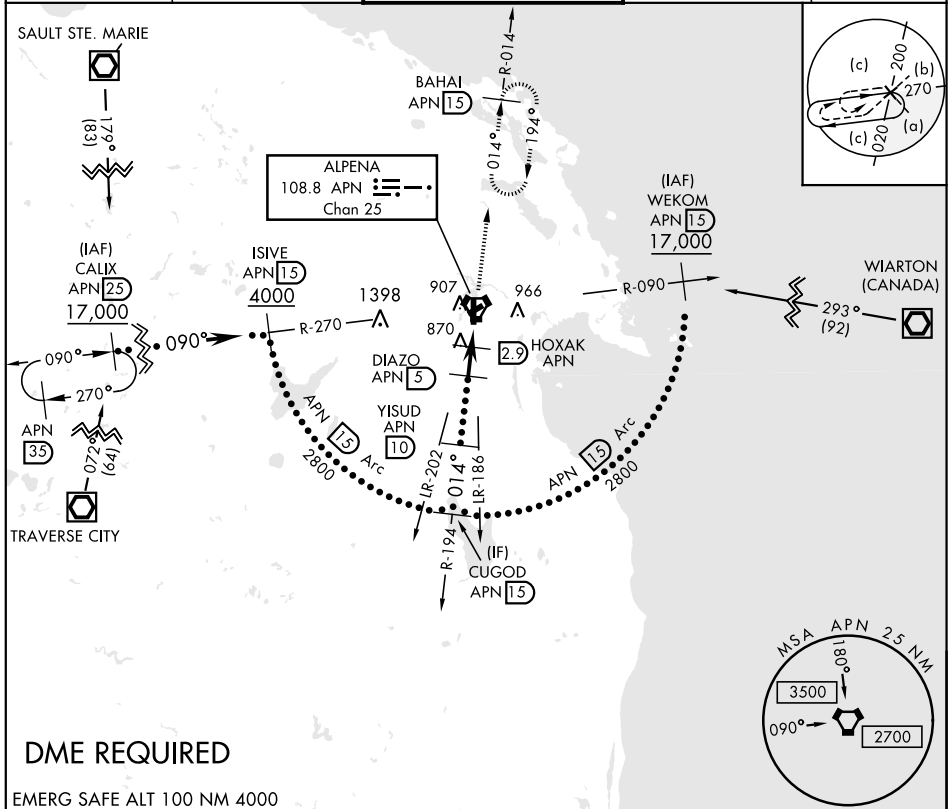


ALPENA, MICHIGAN

# HI-VOR or TACAN RWY 1

<b>VORTAC APN</b> <b>108.8</b> Chan <b>25</b>	<b>APCH CRS</b> <b>014°</b>	<b>Rwy Idg</b> <b>TDZE</b> <b>Arpt Elev</b> <b>9001</b> <b>685</b> <b>690</b>	JAL-718 [USAF]	ALPENA COUNTY RGNL (KAPN)	
* When ALS inop, increase vis to 1 3/8.			MISSED APPROACH: Climb to 5000 on APN R-014 to BAHAI 15 DME and hold, continue climb in hold to 5000.		

<b>ASOS</b> <b>120.675</b>	<b>ALPENA APP CON</b> <b>128.425 379.3</b>	<b>ALPENA TOWER ★</b> <b>121.35 (CTAF) 0 318.1</b>	<b>GND CON</b> <b>121.9 275.8</b>	<b>UNICOM</b> <b>122.95</b>
-------------------------------	---	---	--------------------------------------	--------------------------------



EC-1, 31 JAN 2019 to 28 FEB 2019

EC-1, 31 JAN 2019 to 28 FEB 2019

## DME REQUIRED

EMERG SAFE ALT 100 NM 4000

CUGOD R-194 APN 15 2800	YISUD APN 10 2800	DIAZO APN 5 2000	HOXAK APN 2.9 1340	WUDIM APN 1.6 2.4	VORTAC 5000 APN R-014 BAHAI APN 15 690 TDZE 685
2800 — 2800 — 014° — 2000 — 1340 — 2.1 NM — 1.3 NM — 5 NM —					
CATEGORY S-1 * CIRCLING	C 1140-7/8 1140-1 1/2 450 (500-1 1/2)	D 455 (500-7/8) 1240-2 550 (600-2)	E (500-7/8) 1320-2 1/4 630 (700-2 1/4)	ELEV 690 TDZE 685 61 736 737 767 751 715 719 REIL Rwy 7, 19, and 25 HIRL Rwy 1-19 MIRL Rwy 7-25	

ALPENA, MICHIGAN  
 Amdt 1B 29MAR18

45° 05'N-83° 34'W

ALPENA COUNTY RGNL (KAPN)

# HI-VOR or TACAN RWY 1