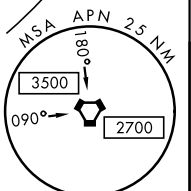
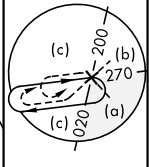
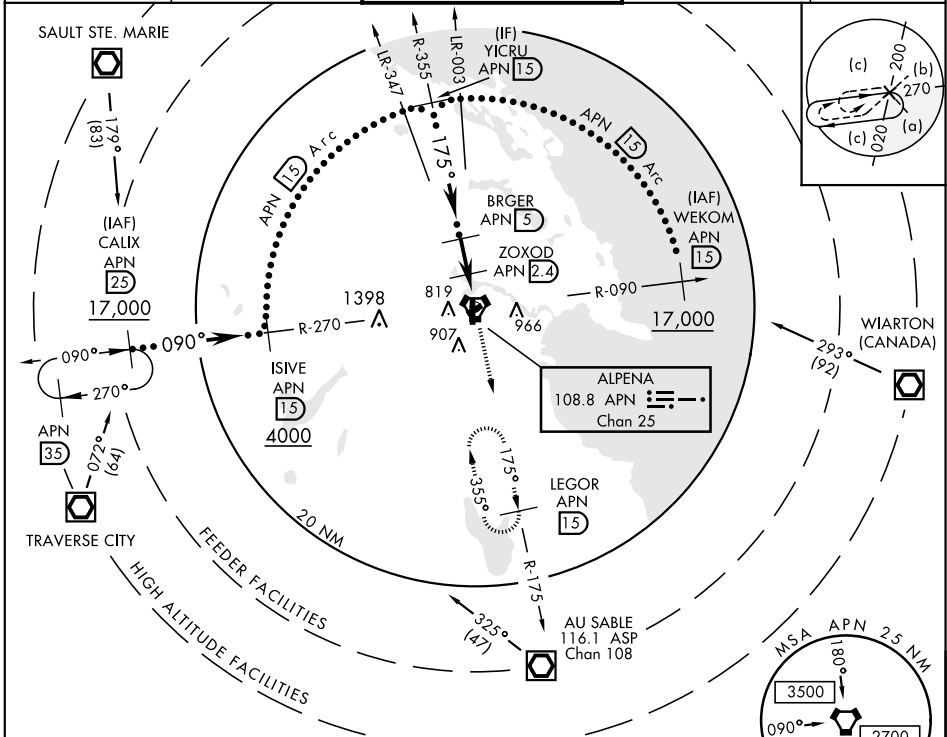


HI-TACAN RWY 19

VORTAC APN 108.8 Chan 25	APCH CRS 175°	Rwy Idg TDZE Arprt Elev 9001 683 690	JAL-718 [USAF]	ALPENA COUNTY RGNL (KAPN)
--	-------------------------	--	----------------	---------------------------

MISSED APPROACH: Climb to 5000 via APN R-175 to LEGOR (15 DME) and hold, continue climb in hold to 5000.

ASOS 120.675	ALPENA APP CON 128.425 379.3	ALPENA TOWER ★ 121.35 (CTAF) 0 318.1	GND CON 121.9 275.8	UNICOM 122.95
------------------------	--	--	-------------------------------	-------------------------



EC-1, 31 JAN 2019 to 28 FEB 2019

EC-1, 31 JAN 2019 to 28 FEB 2019

Visibility reduction by Helicopters NA
EMERG SAFE ALT 100 NM 4000

YICRU R-355 2800	VGSI and descent angles not coincident	5000	LEGOR APN 15	ELEV 690	TDZE 683
BRGER 5	ZOXOD 2.4	JUDBI 1	VORTAC	TWR 768	737
3.23° TCH 55	2300	1380	61	767	715
2.6 NM	1.4 NM	6 NM	719	751	719
CATEGORY	C	D	E	REL Rwy 7, 19, and 25	
S-19	1140-1 3/8	457 (500-1 3/8)		HIRL Rwy 1-19	
CIRCLING	1140-1 1/2 450 (500-1 1/2)	1240-2 550 (600-2)	1320-2 1/4 630 (700-2 1/4)	MIRL Rwy 7-25	

HI-TACAN RWY 19