

VORTAC OKK <b>113.5</b> Chan <b>82</b>	APP CRS <b>312°</b>	Rwy Idg TDZE Apt Elev	<b>4002</b> <b>826</b> <b>832</b>
--	------------------------	-----------------------------	---

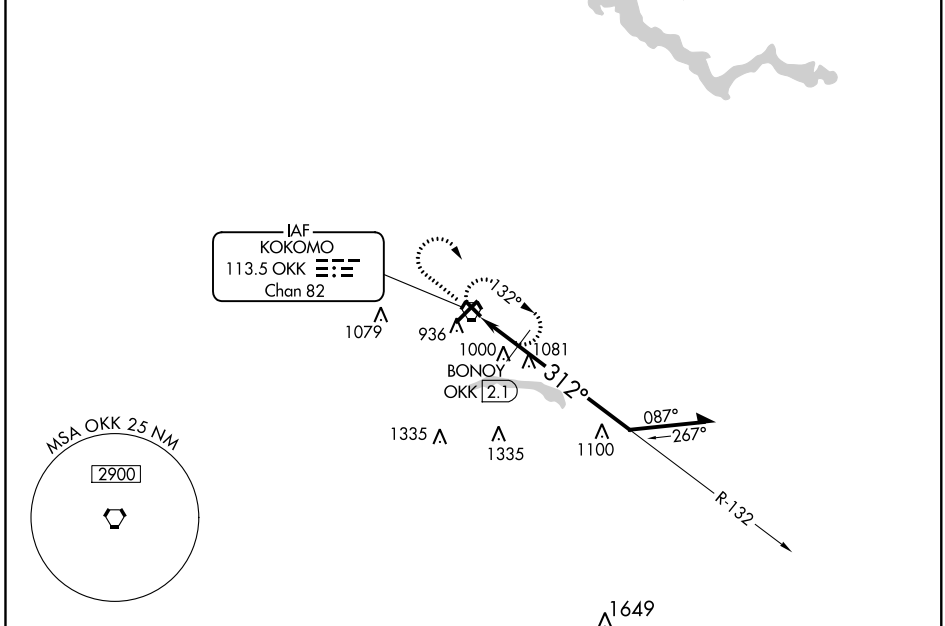
# VOR RWY 32

KOKOMO MUNI (OKK)

**⚠** Rwy 32 helicopter visibility reduction below 3/4 SM NA.

MISSED APPROACH: Climb to 2600 then right turn direct OKK VORTAC and hold.

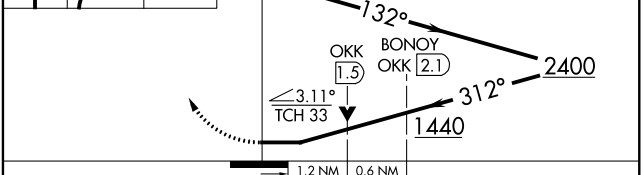
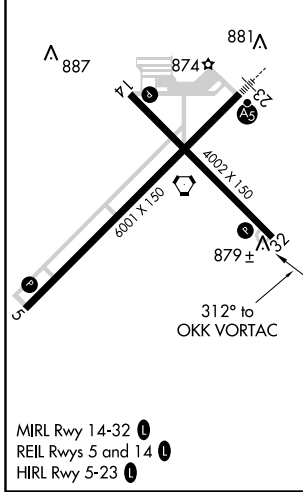
AWOS-3PT <b>113.5</b>	GRISSOM APP CON* <b>121.05 338.275</b>	CLNC DEL <b>120.0</b>	UNICOM <b>123.0 (CTAF) 0</b>
--------------------------	---	--------------------------	---------------------------------



EC-2, 31 JAN 2019 to 28 FEB 2019

EC-2, 31 JAN 2019 to 28 FEB 2019

ELEV 832	TDZE 826
----------	----------



CATEGORY	A	B	C	D
S-32	1440-1	614 (700-1)	1440-1¾	614 (700-1¾)
<b>C</b> CIRCLING	1440-1	608 (700-1)	1440-1¾	1640-2½
BONOY FIX MINIMUMS				
S-32	1260-1	434 (500-1)	1260-1¼	434 (500-1¼)
<b>C</b> CIRCLING	1260-1	1300-1	1400-1½	1640-2½
	428 (500-1)	468 (500-1)	568 (600-1½)	808 (900-2½)