

VOR/DME STS 113.0 Chan 77	APP CRS 146°	Rwy Idg TDZE 122 Apt Elev 129	5880
--	------------------------	---	-------------

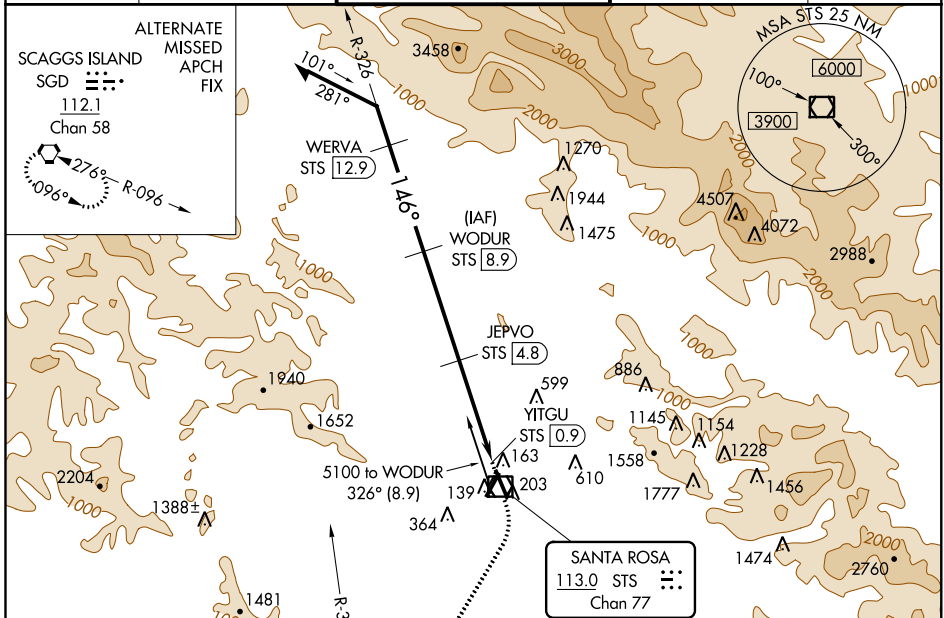
VOR/DME RWY 14

CHARLES M SCHULZ-SONOMA COUNTY (STS)

⚠ Helicopter visibility reduction below 3/4 SM NA.
⚠ When local altimeter setting not received, use Petaluma altimeter setting and increase all MDA 60 feet, and increase S-14 Cats C and D visibility 1/2 mile. Increase Circling Cat A visibility 1/4 mile.

MISSED APPROACH: Climbing right turn to 4000 on heading 195° and on PYE VOR/DME R-335 to PYE VOR/DME and hold.

ATIS 120.55	OAKLAND CENTER 127.8 353.5	SANTA ROSA TOWER ★ 118.5 (CTAF) 363.0	GND CON 121.9	UNICOM 122.95
-----------------------	--------------------------------------	---	-------------------------	-------------------------



ALTERNATE MISSED APCH FIX

SCAGGS ISLAND
SGD
112.1
Chan 58

276° R-096
096°

MISSED APCH FIX

POINT REYES
PYE
113.7
Chan 84

325° R-335

WERVA STS [12.9] 146°

WODUR STS [8.9] 326° (8.9)

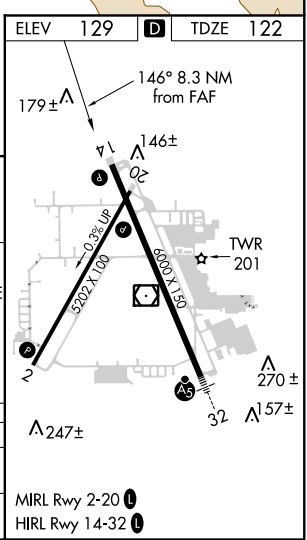
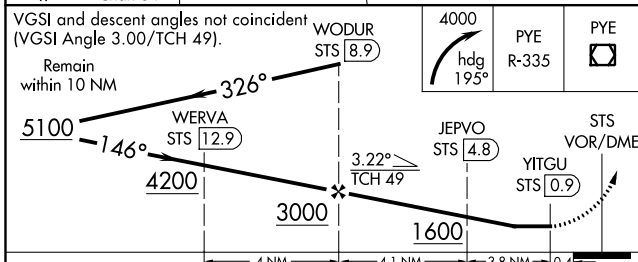
JEPVO STS [4.8]

YITGU STS [0.9]

SANTA ROSA
113.0 STS
Chan 77

R-326 101° 281°

R-335 113.7 PYE Chan 84



CATEGORY	A	B	C	D
S-14	880-1 758 (800-1)	880-1 1/4 758 (800-1 1/4)	880-2 1/2	758 (800-2 1/2)
CIRCLING	880-1 751 (800-1)	880-1 1/4 751 (800-1 1/4)	1080-3 951 (1000-3)	1420-3 1291 (1300-3)

SW-2, 31 JAN 2019 to 28 FEB 2019

SW-2, 31 JAN 2019 to 28 FEB 2019