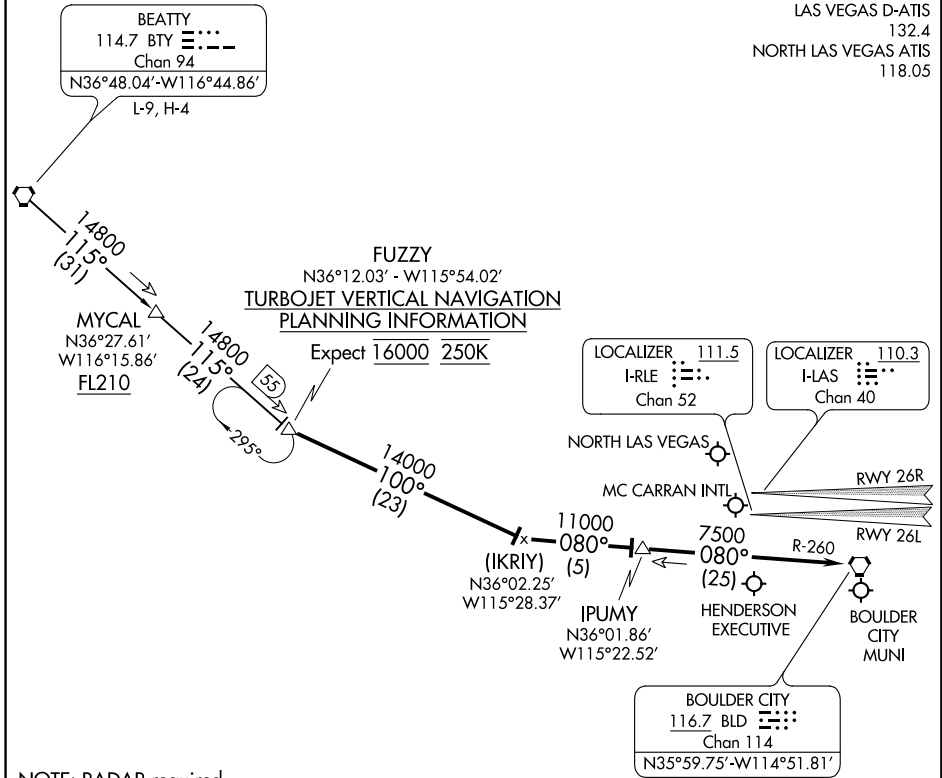


LAS VEGAS APP CON
 125.025 379.15
 LAS VEGAS TOWER
 118.75 257.8 (Rwy 1L/19R, 1R/19L)
 119.9 257.8 (Rwy 8L/26R, 8R/26L)
 NORTH LAS VEGAS TOWER*
 125.7 360.75
 LAS VEGAS D-ATIS
 132.4
 NORTH LAS VEGAS ATIS
 118.05



SW-4, 31 JAN 2019 to 28 FEB 2019

SW-4, 31 JAN 2019 to 28 FEB 2019

NOTE: RADAR required.
 NOTE: DME required.
 NOTE: Chart not to scale.

ARRIVAL ROUTE DESCRIPTION

BEATTY TRANSITION (BTY.FUZZY8): From over BTY VORTAC on BTY R-115 to FUZZY. Thence . . .

. . . From over FUZZY via heading 100° to intercept BLD R-260 to BLD VORTAC.

LANDING LAS RUNWAYS 1L/R, 8L/R, and 19L/R: Expect RADAR vectors for visual approach prior to BLD VORTAC.

LANDING LAS RUNWAYS 26L/R: Expect ILS approach.

LANDING VGT, HND, BVU: Then after IPUMY, expect RADAR vectors to airport.