

# TEEN TWO ARRIVAL (RNAV)

SARASOTA/BRADENTON, FLORIDA

TAMPA APP CON  
119.65 353.575  
SARASOTA/BRADENTON INTL ATIS  
124.375  
VENICE AWOS-3  
119.275

## ARRIVAL ROUTE DESCRIPTION

### HEVNVN TRANSITION (HEVNVN.TEEN2)

From OGGER on track 183° to CLOUW.  
Thence . . .

. . . . Landing KSRQ Rwy 14: From CLOUW on track 183° to ALROE, then on track 138° to MAHAR, then on track 140° to PASOE. Expect RADAR vectors to final approach course.

. . . . Landing KSRQ Rwy 32: From CLOUW on track 183° to ALROE, then on track 138° to MAHAR, then on track 128° to FIVDO, then on track 139° to MURDO, then on heading 230° or as assigned by ATC. Expect RADAR vectors to final approach course.

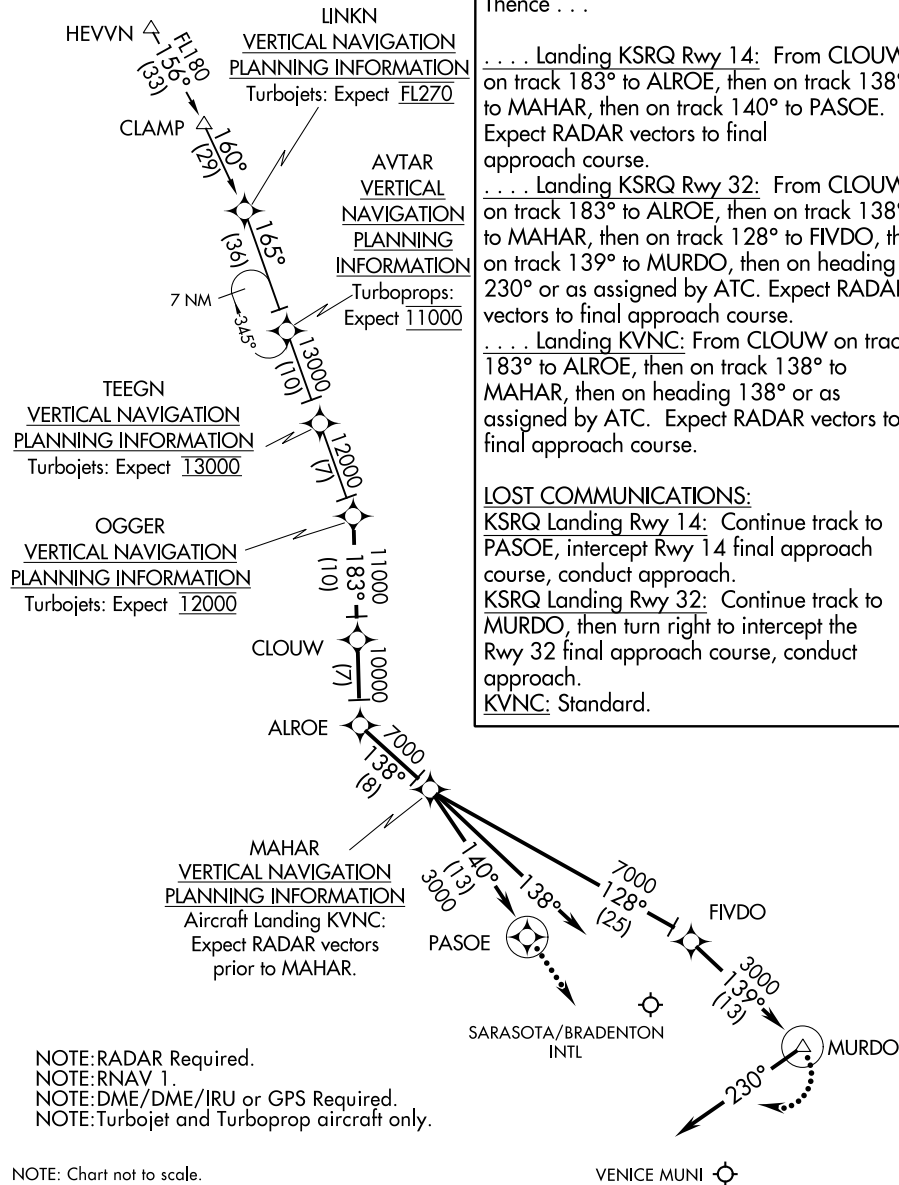
. . . . Landing KVNC: From CLOUW on track 183° to ALROE, then on track 138° to MAHAR, then on heading 138° or as assigned by ATC. Expect RADAR vectors to final approach course.

### LOST COMMUNICATIONS:

KSRQ Landing Rwy 14: Continue track to PASOE, intercept Rwy 14 final approach course, conduct approach.

KSRQ Landing Rwy 32: Continue track to MURDO, then turn right to intercept the Rwy 32 final approach course, conduct approach.

KVNC: Standard.



NOTE:RADAR Required.  
NOTE:RNAV 1.  
NOTE:DME/DME/IRU or GPS Required.  
NOTE:Turbobjet and Turboprop aircraft only.

NOTE: Chart not to scale.

SE-3, 31 JAN 2019 to 28 FEB 2019

SE-3, 31 JAN 2019 to 28 FEB 2019

# TEEN TWO ARRIVAL (RNAV)

SARASOTA/BRADENTON, FLORIDA