

APP CRS **223°**  
 Rwy Idg **5009**  
 TDZE **24**  
 Apt Elev **30**

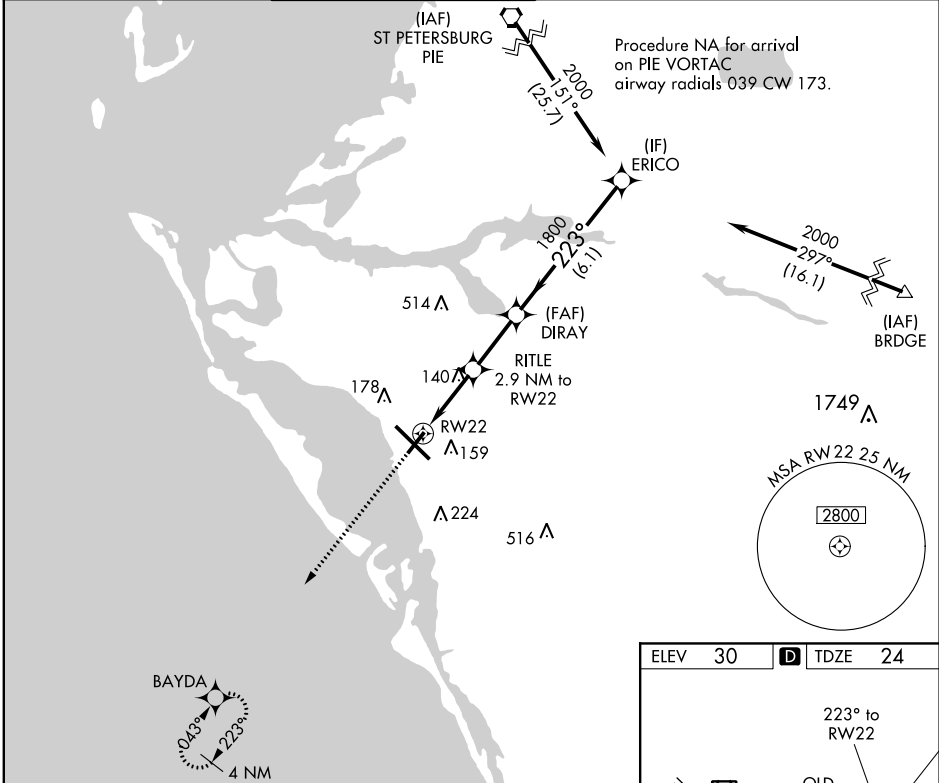
# RNAV (GPS) RWY 22

SARASOTA/BRADENTON INTL (SRQ)

**▼** Night landing: Rwy 4, 22 NA. For uncompensated Baro-VNAV systems, LNAV/VNAV NA below -15°C (5°F) or above 43°C (109°F). DME/DME RNP-0.3 NA. Helicopter visibility reduction below 1 SM NA.

MISSED APPROACH: Climb to 2000 direct BAYDA and hold.

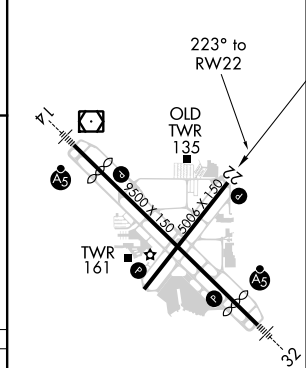
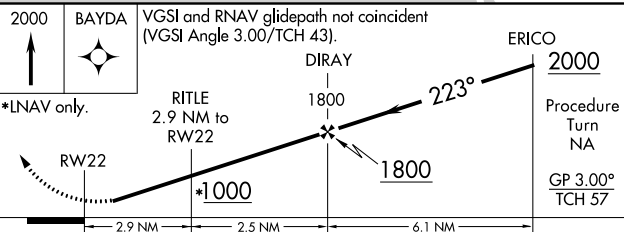
ATIS <b>124.375</b>	TAMPA APP CON <b>119.65 353.575</b>	SARASOTA-BRADENTON TOWER* <b>120.1 (CTAF) 256.8</b>	GND CON <b>121.9 273.6</b>	CLNC DEL <b>118.25</b>	UNICOM <b>122.95</b>
------------------------	--	--	-------------------------------	---------------------------	-------------------------



SE-3, 31 JAN 2019 to 28 FEB 2019

SE-3, 31 JAN 2019 to 28 FEB 2019

ELEV 30 **D** TDZE 24



CATEGORY	A	B	C	D
LNAV/VNAV DA	295-1		271 (300-1)	
LNAV MDA	400-1		376 (400-1)	
CIRCLING	500-1	470 (500-1)	500-1½ 470 (500-1½)	580-2 550 (600-2)

REIL Rwy 22 **I**  
 HIRL Rwys 14-32 and 4-22 **I**