

VORTAC MOT <b>117.1</b> Chan <b>118</b>	APP CRS <b>264°</b>	Rwy Idg <b>6348</b> TDZE <b>1682</b> Apt Elev <b>1716</b>
---	------------------------	---

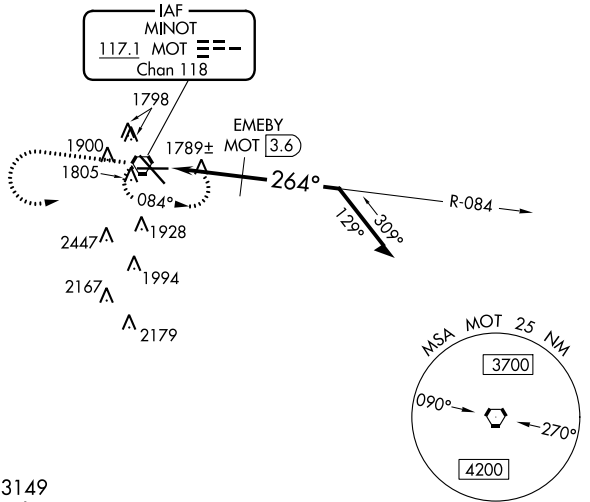
# VOR RWY 26

MINOT INTL (MOT)

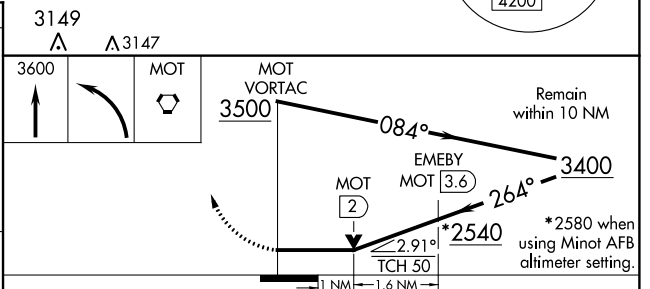
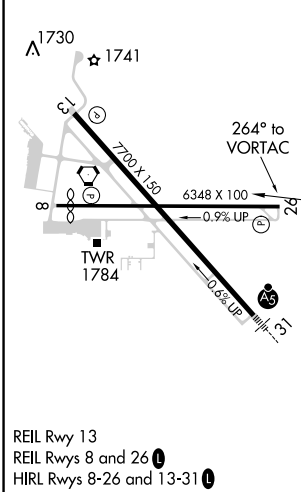
**⚠** VDP NA with Minot AFB altimeter setting. When local altimeter setting not received, use Minot AFB altimeter setting and increase all MDA 40 feet; increase S-26 and Circling Cats A/C/D visibility ¼ mile, and EMEBY FIX minimums Circling Cat C visibility ¼ mile.

MISSED APPROACH: Climb to 3600 then left turn direct MOT VORTAC and hold.

ASOS <b>118.725</b>	MINOT APP CON * <b>119.6 363.8</b>	MAGIC CITY TOWER * <b>118.2 (CTAF) 251.125</b>	GND CON <b>121.9</b>	UNICOM <b>122.95</b>
------------------------	---------------------------------------	---	-------------------------	-------------------------



ELEV 1716	<b>D</b>	TDZE 1682
-----------	----------	-----------



CATEGORY	A	B	C	D
S-26	2540-1 858 (900-1)	2540-1¼ 858 (900-1¼)	2540-2½ 858 (900-1½)	2540-2¾ 858 (900-2¾)
CIRCLING	2540-1 824 (900-1)	2540-1¼ 824 (900-1¼)	2540-2½ 824 (900-1½)	2540-2¾ 824 (900-2¾)
EMEBY FIX MINIMUMS				
S-26	2040-1 358 (400-1)			2040-1¼ 358 (400-1¼)
CIRCLING	2200-1 484 (500-1)		2280-1½ 564 (600-1½)	2280-2 564 (600-2)

NC-1, 31 JAN 2019 to 28 FEB 2019

NC-1, 31 JAN 2019 to 28 FEB 2019