

WAAS CH 97616 W08A	APP CRS 080°	Rwy Idg TDZE Apt Elev	5957 1712 1716
--	------------------------	-----------------------------	---

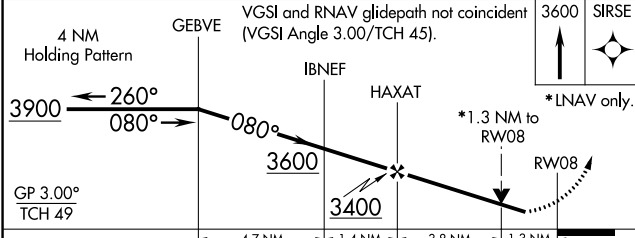
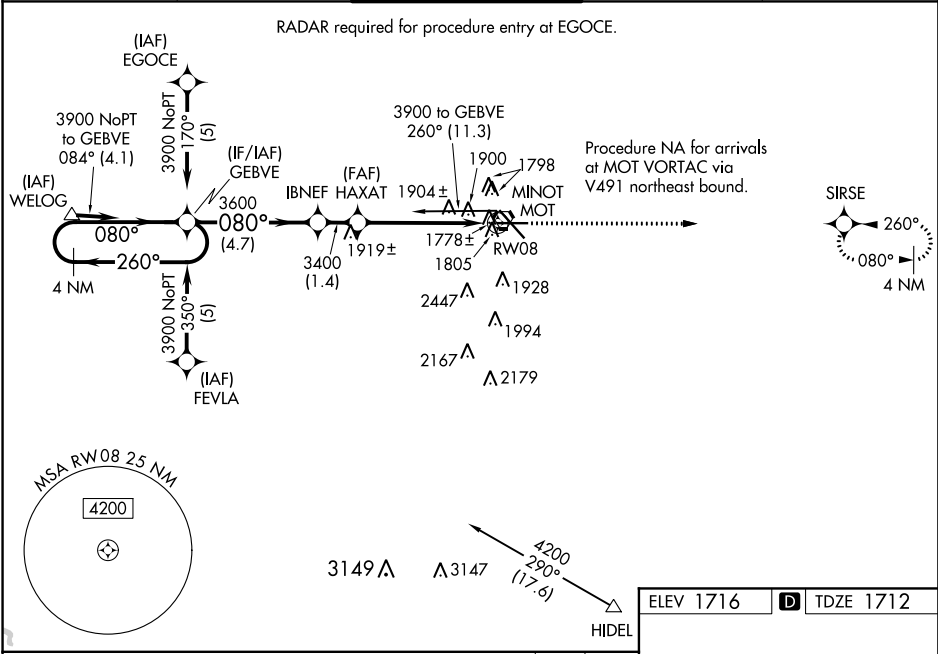
RNAV (GPS) RWY 8

MINOT INTL (MOT)

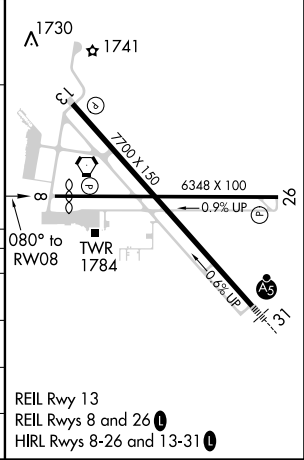
⚠ For uncompensated Baro-VNAV systems, LNAV/VNAV NA below -18°C (0°F) or above 45°C (113°F). DME/DME RNP-0.3 NA. Helicopter visibility reduction below ¾ SM NA. Baro-VNAV NA when using Minot AFB altimeter setting. VDP NA with Minot AFB altimeter setting. When local altimeter setting not received, use Minot AFB altimeter setting and increase all DA 30 feet and all MDA 40 feet; increase LNAV/VNAV all Cats visibility ¼ mile and Circling Cat C visibility ¼ mile.

MISSED APPROACH:
Climb to 3600 direct SIRSE and hold.

ASOS 118.725	MINOT APP CON * 119.6 363.8	MAGIC CITY TOWER * 118.2 (CTAF) 0 251.125	GND CON 121.9	UNICOM 122.95
------------------------	---------------------------------------	---	-------------------------	-------------------------



ELEV 1716	D	TDZE 1712
-----------	----------	-----------



CATEGORY	A	B	C	D
LPV DA	1991-1 279 (300-1)			
LNAV/VNAV DA	2218-1¾ 506 (600-1¾)			
LNAV MDA	2160-1 448 (500-1)	2160-1¼ 448 (500-1¼)	2160-1½ 448 (500-1½)	2160-1¾ 448 (500-1¾)
CIRCLING	2200-1 484 (500-1)	2280-1½ 564 (600-1½)	2280-2 564 (600-2)	

NC-1, 31 JAN 2019 to 28 FEB 2019

NC-1, 31 JAN 2019 to 28 FEB 2019