

WAAS CH 66099 W31A	APP CRS 308°	Rwy Idg TDZE Apt Elev	7700 1679 1716
--	------------------------	-----------------------------	---

RNAV (GPS) RWY 31

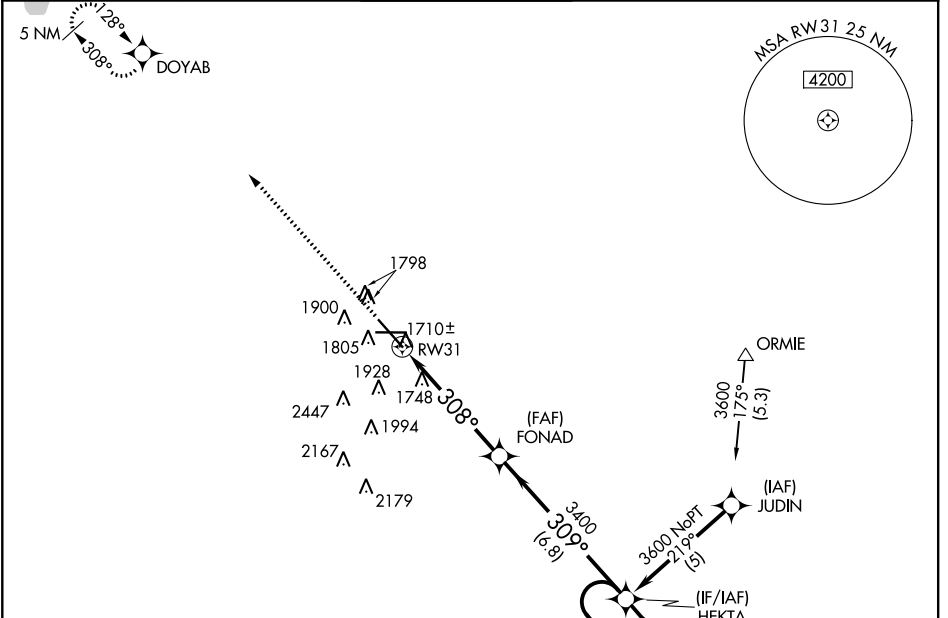
MINOT INTL (MOT)

⚠ If local altimeter setting not received use Minot AFB altimeter setting and increase all DAs/MDAs 40 feet. Baro-VNAV NA below -18°C (0°F). VDP and Baro-VNAV NA when using Minot AFB altimeter setting. For inoperative MALS increase LPV visibility to RVR 5000 all Cats, LNAV/VNAV Cat D visibility to RVR 5000. Inoperative table does not apply to LNAV Cat D. DME/DME RNP-0.3 NA.

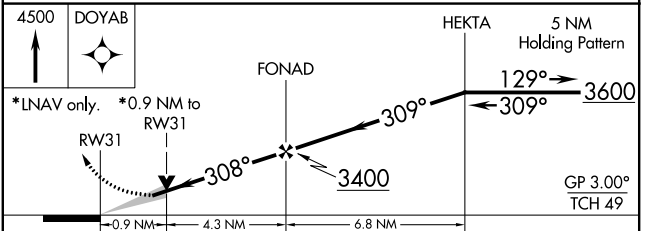
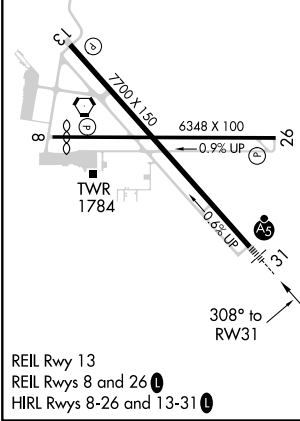


MISSED APPROACH:
Climb to 4500 direct DOYAB and hold.

ASOS 118.725	MINOT APP CON * 119.6 363.8	MAGIC CITY TOWER * 118.2(CTAF) 0 251.125	GND CON 121.9	UNICOM 122.95
------------------------	---------------------------------------	--	-------------------------	-------------------------



ELEV 1716	D	TDZE 1679
-----------	----------	-----------



CATEGORY	A	B	C	D
LPV DA	1929/24 250 (300-1/2)			
LNAV/VNAV DA	1960/24 287 (300-1/2)		1960/40 287 (300-3/4)	
LNAV MDA	2000/24 321 (300-1/2)		2000/50 321 (300-1)	
CIRCLING	2200-1 484 (500-1)		2280-1 1/2 564 (600-1 1/2)	2280-2 564 (600-2)

NC-1, 31 JAN 2019 to 28 FEB 2019

NC-1, 31 JAN 2019 to 28 FEB 2019