

WAAS CH 56516 W 26A	APP CRS 260°	Rwy Idg TDZE Apt Elev	6348 1682 1716
---	------------------------	-----------------------------	---

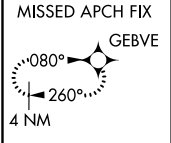
RNAV (GPS) RWY 26

MINOT INTL (MOT)

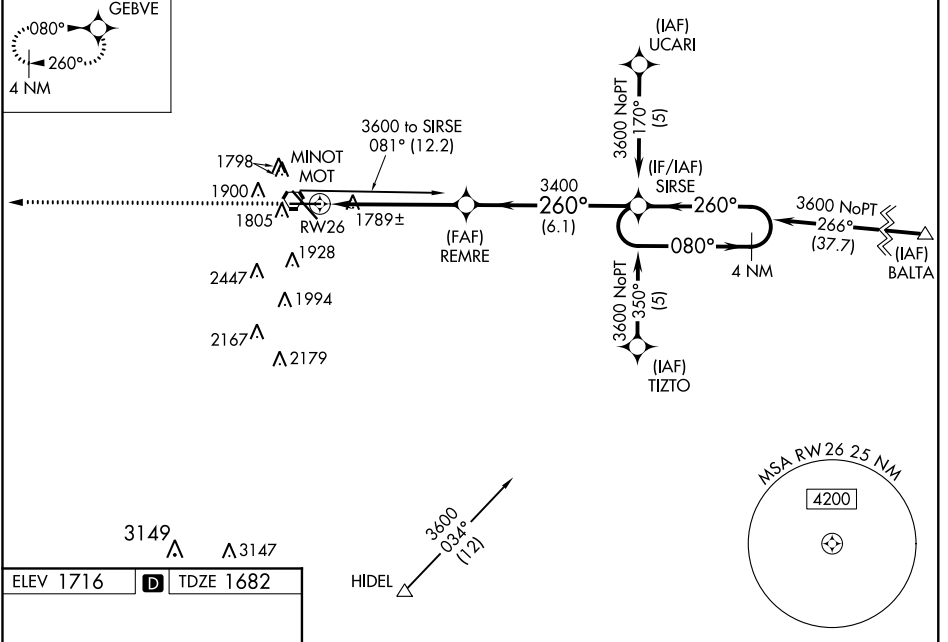
⚠ For uncompensated Baro-VNAV systems, LNAV/VNAV NA below -18°C (0°F) or above 45°C (113°F). DME/DME RNP-0.3 NA. Baro-VNAV NA when using Minot AFB altimeter setting. VDP NA with Minot AFB altimeter setting. When local altimeter setting not received, use Minot AFB altimeter setting and increase all DA 30 feet and all MDA 40 feet; increase Circling Cat C visibility ¼ mile.

MISSED APPROACH: Climb to 3900 direct GEBVE and hold.

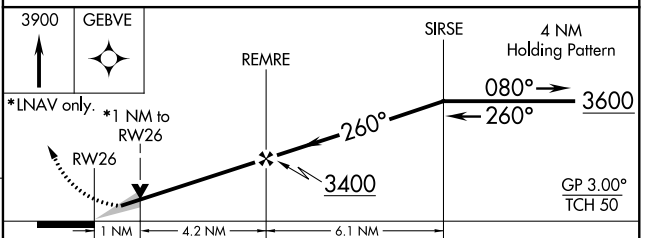
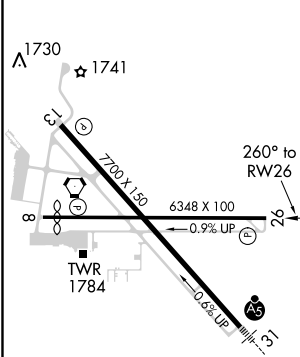
ASOS 118.725	MINOT APP CON * 119.6 363.8	MAGIC CITY TOWER * 118.2 (CTAF) 0 251.125	GND CON 121.9	UNICOM 122.95
------------------------	---------------------------------------	---	-------------------------	-------------------------



RADAR required for procedure entry at UCARI.



ELEV 1716	D	TDZE 1682
-----------	----------	-----------



CATEGORY	A	B	C	D
LPV DA		1932-1	250 (300-1)	
LNAV/VNAV DA		1932-1	250 (300-1)	
LNAV MDA		2040-1	358 (400-1)	2040-1½ 358 (400-1½)
CIRCLING	2200-1	484 (500-1)	2280-1½ 564 (600-1½)	2280-2 564 (600-2)

REIL Rwy 13
REIL Rwy 8 and 26
HIRL Rwy 8-26 and 13-31

NC-1, 31 JAN 2019 to 28 FEB 2019

NC-1, 31 JAN 2019 to 28 FEB 2019