

WAAS CH 70399 W13A	APP CRS 128°	Rwy Idg TDZE Apt Elev	7700 1702 1716
--	------------------------	-----------------------------	---

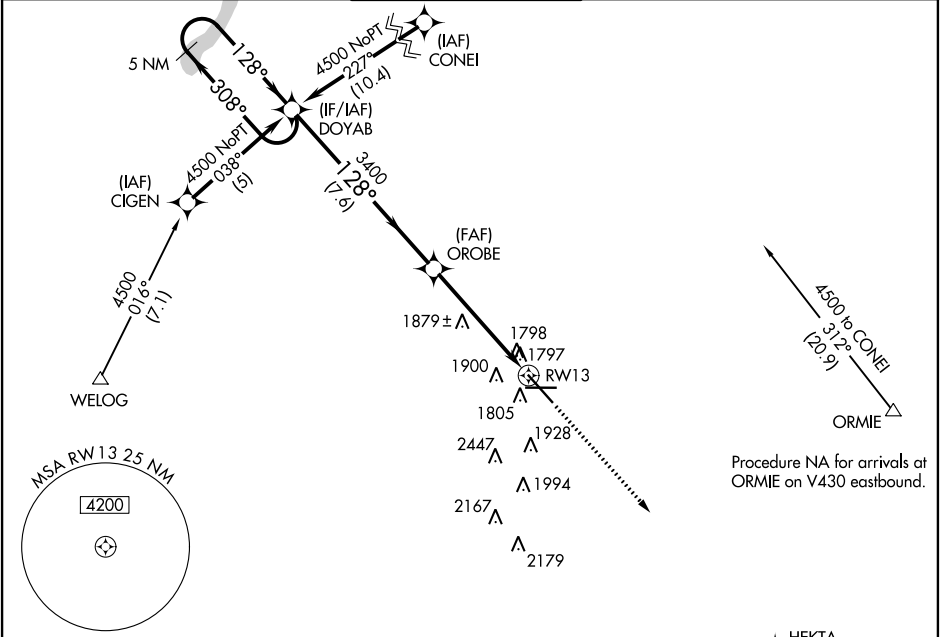
RNAV (GPS) RWY 13

MINOT INTL (MOT)

⚠ If local altimeter not received, use Minot AFB altimeter setting and increase all DAs/MDAs 40 feet. Baro-VNAV NA below -18°C (0°F). VDP and Baro-VNAV NA when using Minot AFB altimeter setting. DME/DME RNP-0.3 NA.

MISSED APPROACH: Climb to 4000 direct HEKTA and hold.

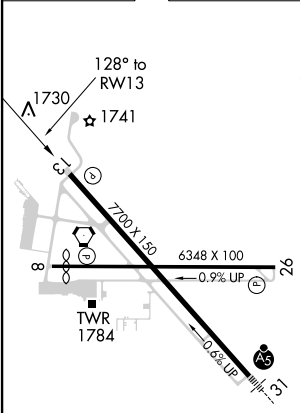
ASOS 118.725	MINOT APP CON * 119.6 363.8	MAGIC CITY TOWER * 118.2 (CTAF) 251.125	GND CON 121.9	UNICOM 122.95
------------------------	---------------------------------------	---	-------------------------	-------------------------



NC-1, 31 JAN 2019 to 28 FEB 2019

NC-1, 31 JAN 2019 to 28 FEB 2019

ELEV 1716	D	TDZE 1702
-----------	----------	-----------



5 NM Holding Pattern GP 3.00° TCH 49	DOYAB		OROBE		4000	HEKTA
	3149		3147		5 NM	
4500 ← 308°		→ 128°		→ 128°		→ 309°
				*1.2 NM to RW13		*LNAV only.
				3400		RW13
				7.6 NM		3.9 NM
				1.2		
CATEGORY	A	B	C	D		
LPV DA	2021-1				319	(400-1)
LNAV/VNAV DA	2181-1¾		479		(500-1¾)	
LNAV MDA	2140-1	438 (500-1)		2140-1½	438 (500-1½)	
CIRCLING	2200-1	484 (500-1)		2280-1½	2280-2	
				564	(600-1½)	
				564	(600-2)	

REL Rwy 13
REL Rwy 8 and 26
HIRL Rwy 8-26 and 13-31