

LOC/DME I-MOT <b>111.9</b> Chan <b>56</b>	APP CRS <b>128°</b>	Rwy Idg <b>7700</b> TDZE <b>1702</b> Apt Elev <b>1716</b>
---	------------------------	---

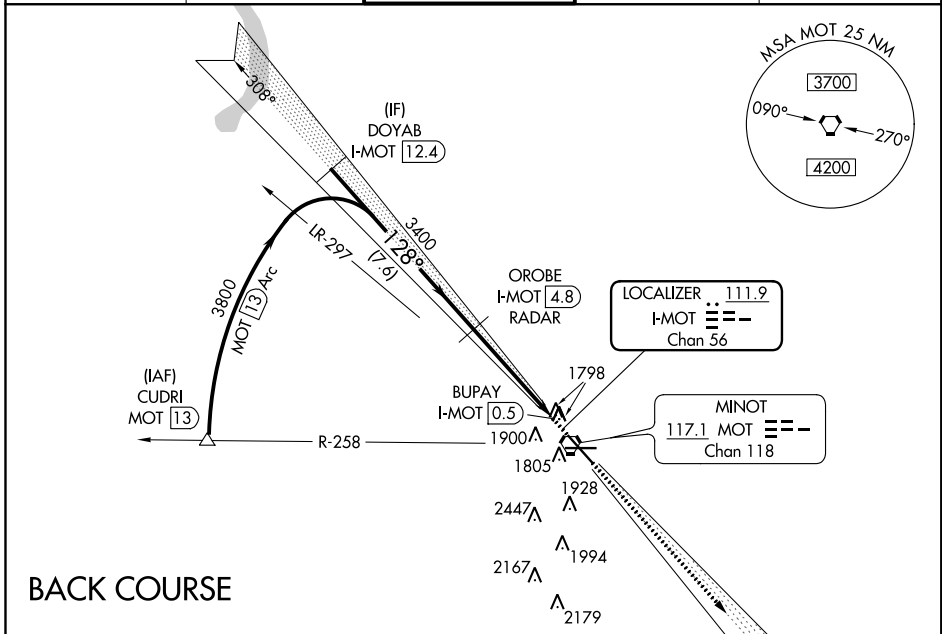
# LOC/DME BC RWY 13

MINOT INTL (MOT)

**⚠** When local altimeter not received, use Minot AFB altimeter setting and increase all MDA 40 feet and S-13 Cat C/D visibility to 1 1/2.

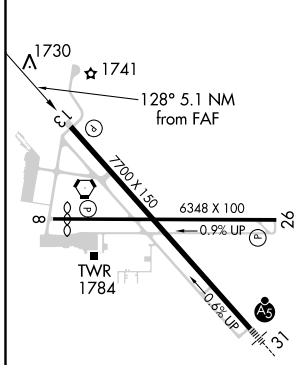
MISSED APPROACH: Climb to 3700 on I-MOT LOC SE course to HEKTA/I-MOT 13.6 DME/RADAR and hold.

ASOS <b>118.725</b>	MINOT APP CON ★ <b>119.6 363.8</b>	MAGIC CITY TOWER ★ <b>118.2 (CTAF) 251.125</b>	GND CON <b>121.9</b>	UNICOM <b>122.95</b>
------------------------	---------------------------------------	---	-------------------------	-------------------------

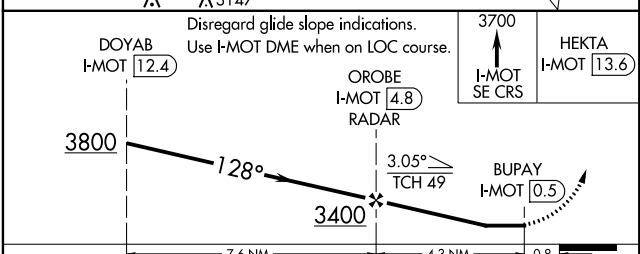


## BACK COURSE

ELEV 1716	<b>D</b>	TDZE 1702
-----------	----------	-----------



REIL Rwy 13  
REIL Rwys 8 and 26  
HIRL Rwys 8-26 and 13-31



CATEGORY	A	B	C	D
S-13	2060-1 358 (400-1)			
CIRCLING	2200-1	484 (500-1)	2280-1 1/2 564 (600-1 1/2)	2320-2 604 (700-2)

NC-1, 31 JAN 2019 to 28 FEB 2019

NC-1, 31 JAN 2019 to 28 FEB 2019