

LOC/DME I-MOT 111.9 Chan 56	APP CRS 308°	Rwy Idg 7700 TDZE 1673 Apt Elev 1716
---	------------------------	---

ILS or LOC RWY 31

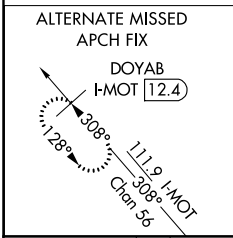
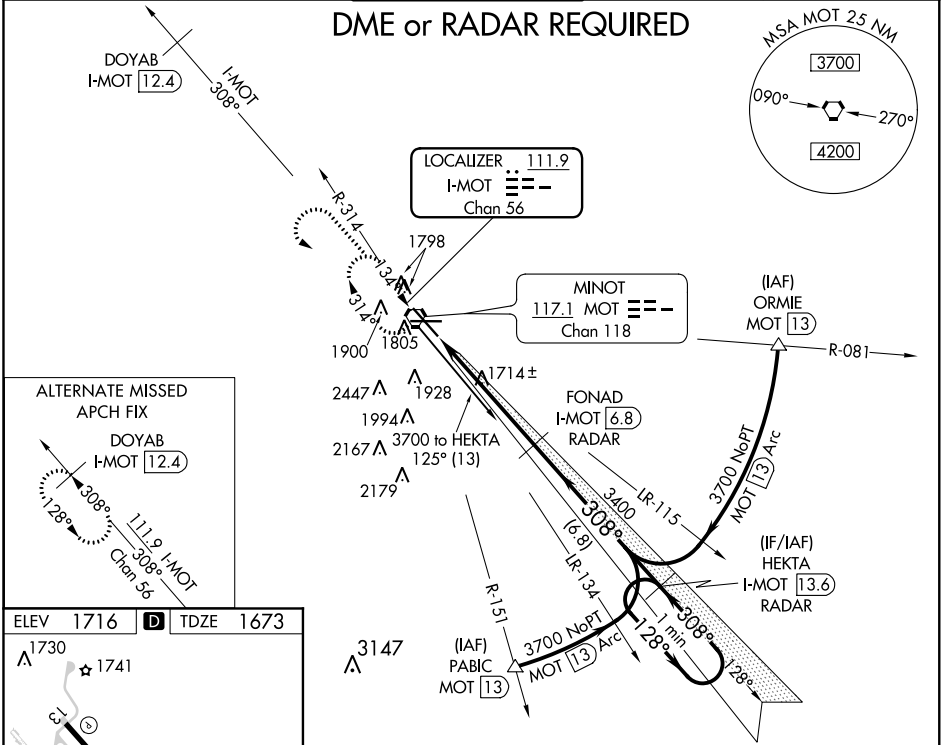
MINOT INTL (MOT)

⚠ If local altimeter setting not received use Minot AFB altimeter setting and increase all DAs/MDAs 40 feet. VDP NA when using Minot AFB altimeter setting. DME or RADAR required. For inoperative MALSRS increase S-ILS 31 Cat E visibility to RVR 4000, and S-LOC 31 Cats D and E visibility to RVR 5000. * RVR 1800 authorized with the use of FD or AP or HUD to DA.

MALSRS

MISSED APPROACH:
Climb to 3700 then left turn direct MOT VORTAC and hold.

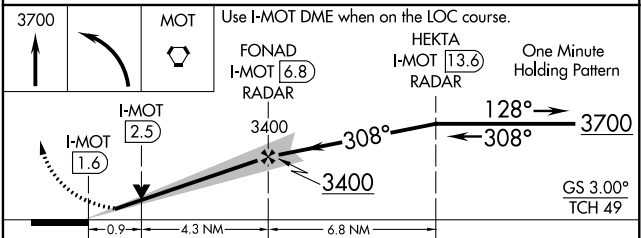
ASOS 118.725	MINOT APP CON * 119.6 363.8	MAGIC CITY TOWER * 118.2 (CTAF) 251.125	GND CON 121.9	UNICOM 122.95
------------------------	---------------------------------------	---	-------------------------	-------------------------



ELEV 1716	D	TDZE 1673
------------------	----------	------------------

REIL Rwy 13
REIL Rws 8 and 26
HIRL Rws 8-26 and 13-31
FAF to MAP 5.2 NM

Knots	60	90	120	150	180
Min:Sec	5:12	3:28	2:36	2:05	1:44



CATEGORY	A	B	C	D	E
S-ILS 31*	1873/24 200 (200-½)				
S-LOC 31	1980/24 307 (300-½)		1980/40 307 (300-¾)		
CIRCLING	2200-1 484 (500-1)	2280-1½ 564 (600-1½)	2280-2 564 (600-2)	2800-3 1084 (1100-3)	

NC-1, 31 JAN 2019 to 28 FEB 2019

NC-1, 31 JAN 2019 to 28 FEB 2019