

17285

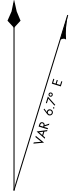
# AIRPORT DIAGRAM

AL-635 (FAA)

MINOT INTL (MOT)  
MINOT, NORTH DAKOTA

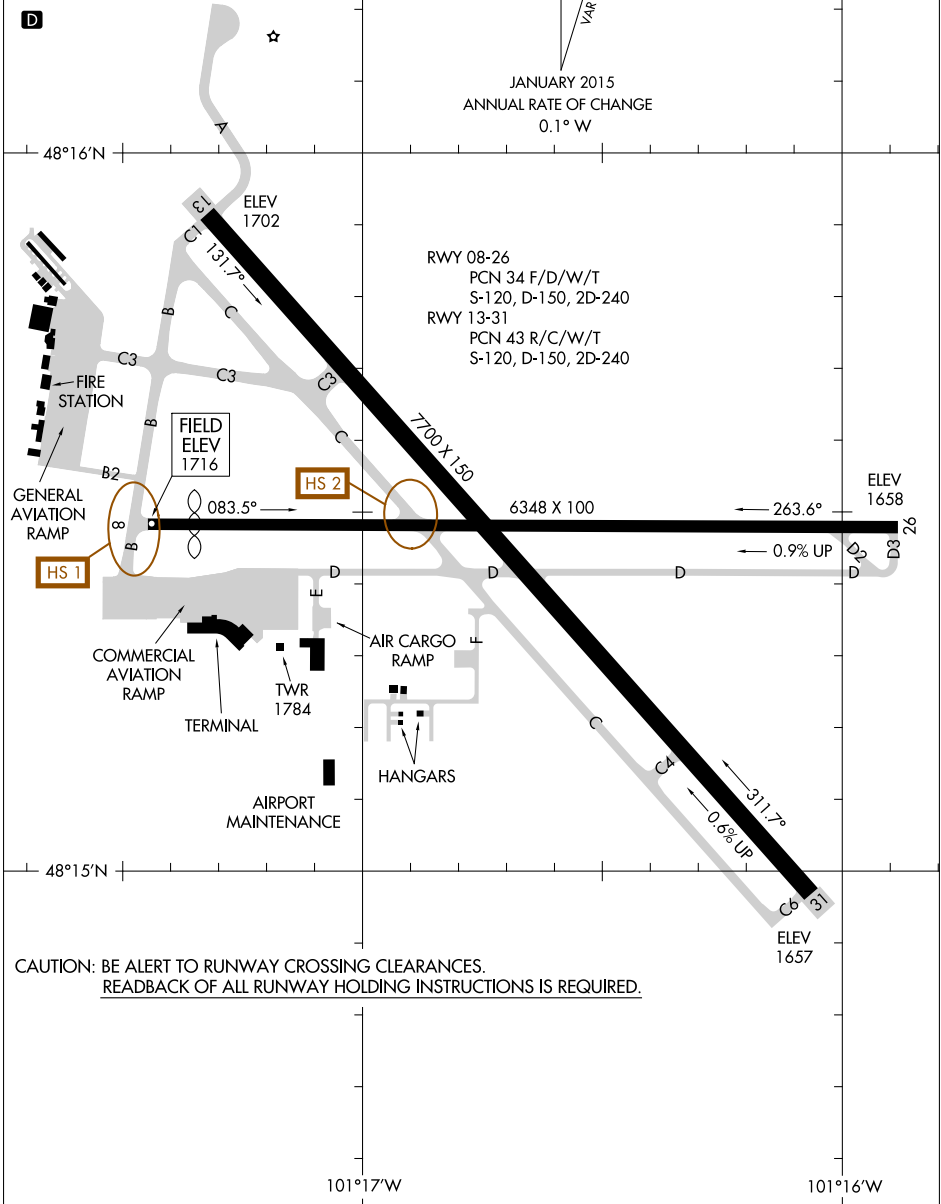
ASOS  
118.725  
MAGIC CITY TOWER \*  
118.2 251.125  
GND CON  
121.9

D



JANUARY 2015  
ANNUAL RATE OF CHANGE  
0.1° W

48°16'N



RWY 08-26  
PCN 34 F/D/W/T  
S-120, D-150, 2D-240  
RWY 13-31  
PCN 43 R/C/W/T  
S-120, D-150, 2D-240

FIRE STATION

FIELD  
ELEV  
1716

HS 2

HS 1

GENERAL  
AVIATION  
RAMP

COMMERCIAL  
AVIATION  
RAMP

TERMINAL

TWR  
1784

AIR CARGO  
RAMP

HANGARS

AIRPORT  
MAINTENANCE

48°15'N

CAUTION: BE ALERT TO RUNWAY CROSSING CLEARANCES.  
READBACK OF ALL RUNWAY HOLDING INSTRUCTIONS IS REQUIRED.

101°17'W

101°16'W

NC-1, 31 JAN 2019 to 28 FEB 2019

NC-1, 31 JAN 2019 to 28 FEB 2019

# AIRPORT DIAGRAM

17285

MINOT, NORTH DAKOTA  
MINOT INTL (MOT)