

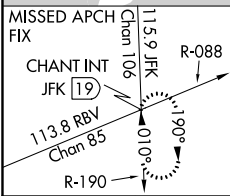
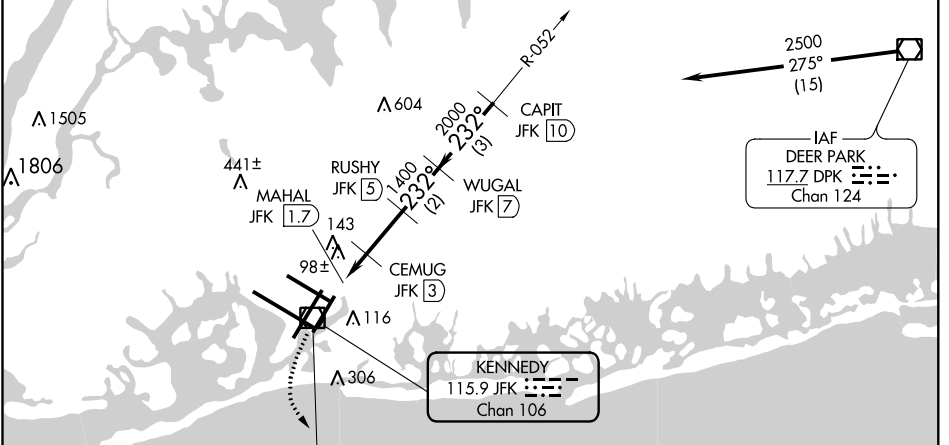
VOR/DME JFK <b>115.9</b> Chan <b>106</b>	APP CRS <b>232°</b>	Rwy Idg <b>8400</b> TDZE <b>13</b> Apt Elev <b>13</b>
--	------------------------	---

# VOR/DME RWY 22L

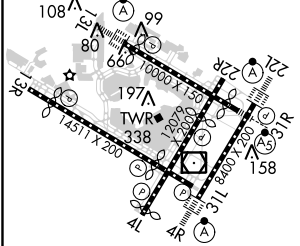
JOHN F KENNEDY INTL (JFK)

▼ Rwy 22L helicopter visibility reduction below RVR 4000 NA. For inop ALS, increase S-22L Cat A/B visibility to RVR 5500.	ALSF-2 	MISSED APPROACH: Climbing left turn to 3000 via JFK R-190 to CHANT INT/19 DME and hold.
--	------------	--

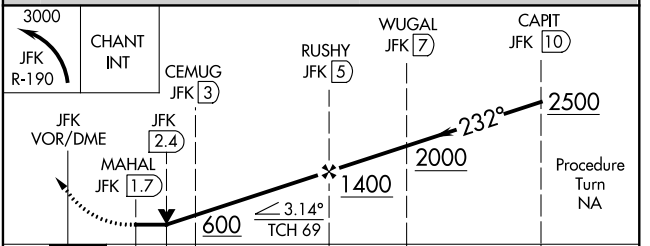
D-ATIS (ARR/DEP) (ARR-NE) (ARR-SW) <b>128.725 117.7 115.4</b>	NEW YORK APP CON <b>128.125 269.0</b>	KENNEDY TOWER Rwys 4R/22L and 13L/31R <b>119.1 281.55</b> Rwys 4L/22R and 13R/31L <b>123.9 281.55</b>	GND CON <b>121.9 135.05</b> <b>348.6 348.6</b>	CLNC DEL <b>135.05</b> <b>348.6</b>	CPDLC
---	--	---	--	---	-------



ELEV 13	<b>D</b>	TDZE 13
---------	----------	---------



REIL Rwy 4L	RLLS Rwy 13R	HIRL all Rwys	TDZ/CL Rwys 4R, 13L, 31R and 22L
-------------	--------------	---------------	----------------------------------



CATEGORY	A	B	C	D
S-22L	440/40	427 (500-3/4)		440/50 427 (500-1)
<b>C</b> CIRCLING	640-1	627 (700-1)	640-1 3/4 627 (700-1 3/4)	660-2 647 (700-2)

NE-2, 31 JAN 2019 to 28 FEB 2019

NE-2, 31 JAN 2019 to 28 FEB 2019