

WAAS CH 81819 W04B	APP CRS 044°	Rwy Idg 8400 TDZE 12 Apt Elev 13
--	------------------------	---


RNAV (GPS) Y RWY 4R

JOHN F KENNEDY INTL (JFK)

RNP APCH.

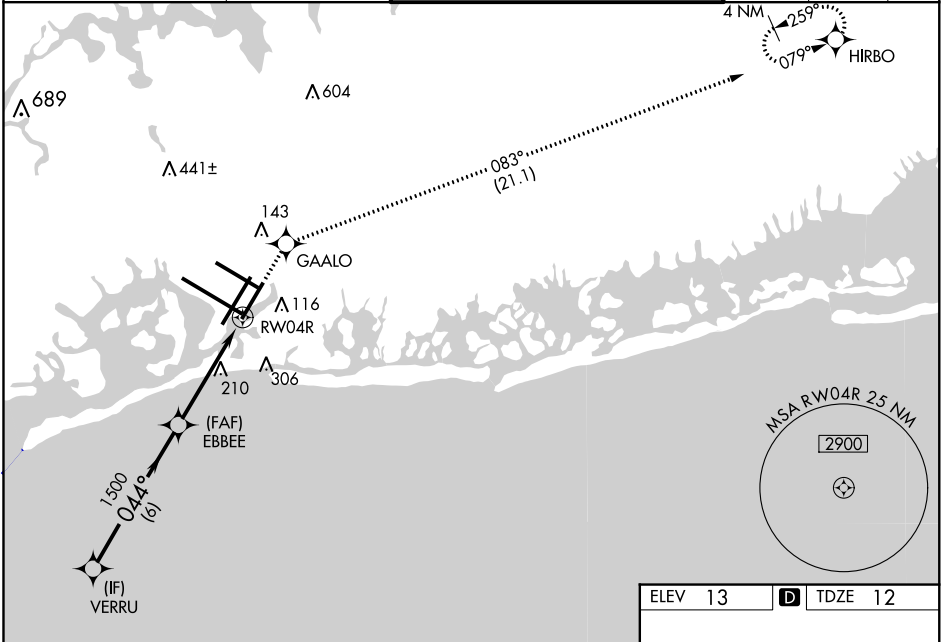
▼ For uncompensated Baro-VNAV systems, LNAV/VNAV NA below -12°C (11°F) or above 54°C (130°F). Simultaneous approach authorized. LNAV procedure NA during simultaneous operations. Use of FD or AP providing RNAV track guidance required during simultaneous operations. For Inop ALS, increase LNAV/VNAV all Cats visibility to RVR 6000 and LNAV Cat C/D visibility to 1½ SM.

ALSF-2



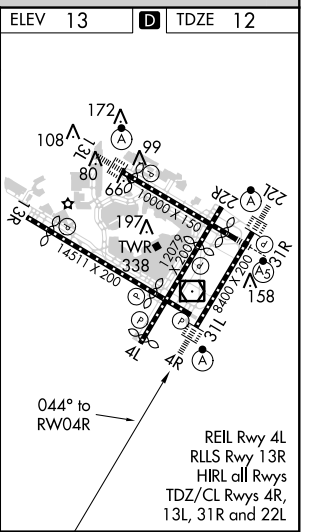
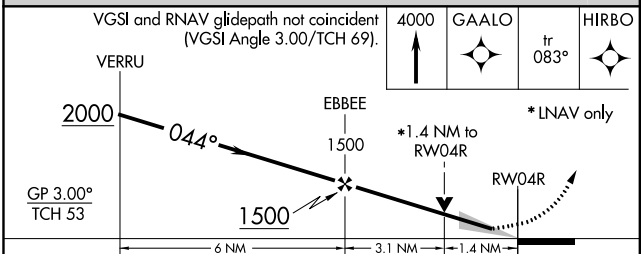
MISSED APPROACH: (Do not exceed 210K until GAALO) Climb to 4000 direct GAALO and on track 083° to HIRBO and hold.

D-ATIS (ARR/DEP) (ARR-NE) (ARR-SW) 128.725 117.7 115.4	NEW YORK APP CON 128.125 269.0	KENNEDY TOWER Rwys 4R/22L and 13L/31R 119.1 281.55 Rwys 4L/22R and 13R/31L 123.9 281.55	GND CON 121.9 348.6	CLNC DEL 135.05 348.6	CPDLC
---	--	---	-------------------------------	---------------------------------	-------



NE-2, 31 JAN 2019 to 28 FEB 2019

NE-2, 31 JAN 2019 to 28 FEB 2019



CATEGORY	A	B	C	D
LPV DA		212/18	200 (200-½)	
LNAV/VNAV DA		369/40	357 (400-¾)	
LNAV MDA	520/24	508 (600-½)	520/55	508 (600-1)
C CIRCLING	640-1	627 (700-1)	640-1¾ 627 (700-1¾)	660-2 647 (700-2)