

APP CRS	Rwy ldg	11010
044°	TDZE	13
	Apt Elev	13

RNAV (RNP) Z RWY 4L

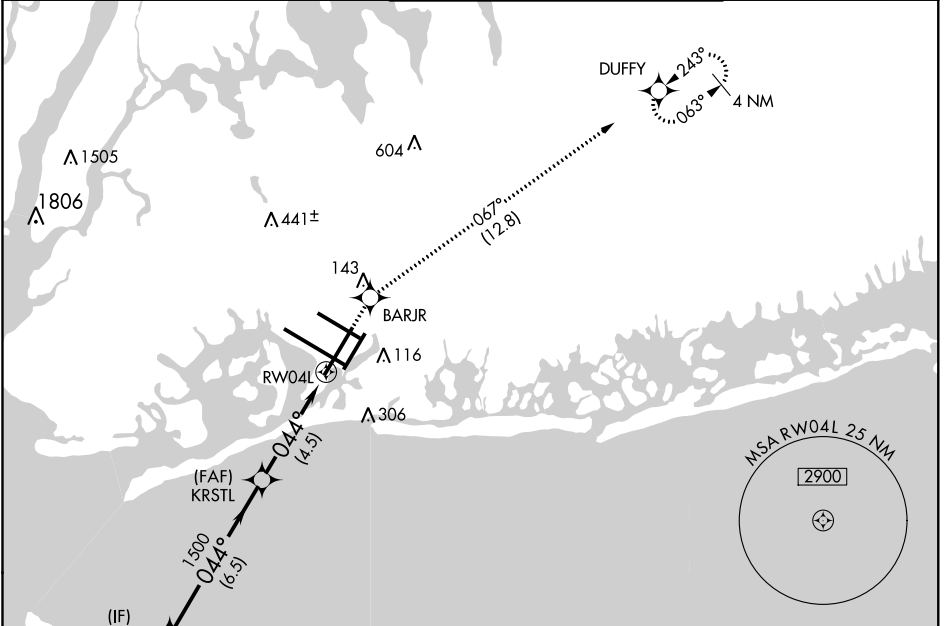
JOHN F KENNEDY INTL (JFK)

RNP AR APCH.

▼ For uncompensated Baro-VNAV systems, procedure NA below -12°C (11°F) or above 54°C (130°F). Simultaneous approach authorized.

MISSED APPROACH: Climb to 3000 direct BARJR and track 067° to DUFFY and hold.

D-ATIS (ARR/DEP) (ARR-NE) (ARR-SW)			NEW YORK APP CON		KENNEDY TOWER		GND CON	CLNC DEL	CPDLC	
128.725	117.7	115.4	128.125	269.0	Rwys 4R/22L and 13L/31R	119.1	281.55	121.9	135.05	
					Rwys 4L/22R and 13R/31L	123.9	281.55	348.6	348.6	



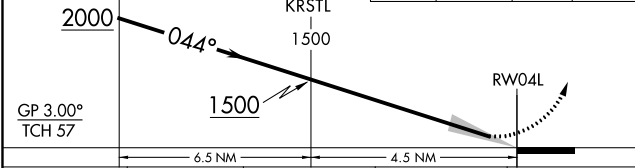
NE-2, 31 JAN 2019 to 28 FEB 2019

NE-2, 31 JAN 2019 to 28 FEB 2019

ELEV	13	D	TDZE	13
------	-----------	----------	------	-----------

VGSI and RNAV glidepath not coincident (VGSI Angle 3.00/TCH 75).

3000	BARJR	DUFFY
↑	✧	tr 067° ✧



CATEGORY	A	B	C	D
RNP 0.30 DA		331/50	318 (400-1)	

AUTHORIZATION REQUIRED

