

# RNAV (RNP) Z RWY 31L

JOHN F KENNEDY INTL (JFK)

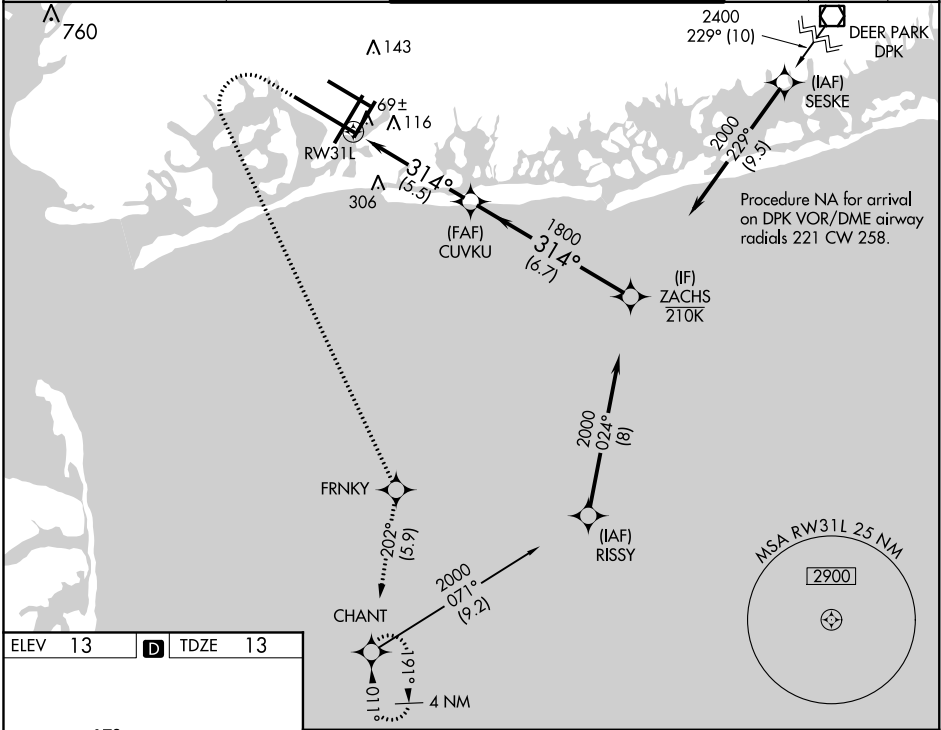
APP CRS <b>314°</b>	Rwy Idg <b>11248</b>
	TDZE <b>13</b>
	Apt Elev <b>13</b>

RNP AR APCH.

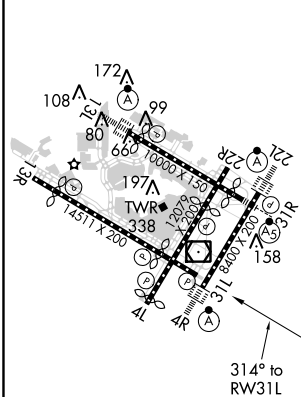
▼ For uncompensated Baro-VNAV systems, procedure NA below -12°C or above 54°C. Simultaneous approach authorized. Use of FD or AP required during simultaneous operations.

MISSED APPROACH: Climb to 500 then climbing left turn to 3000 direct FRNKY and on track 202° to CHANT and hold.

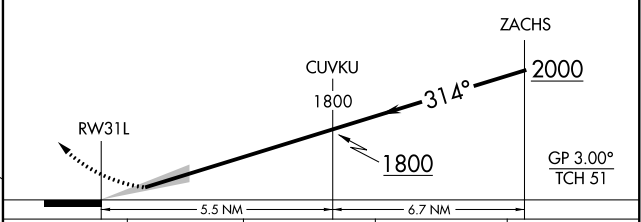
D-ATIS (ARR/DEP) (ARR-NE) (ARR-SW)	NEW YORK APP CON	KENNEDY TOWER Rwys 4R/22L and 13L/31R Rwys 4L/22R and 13R/31L	GND CON	CLNC DEL	CPDLC
<b>128.725 117.7 115.4</b>	<b>128.125 269.0</b>	<b>119.1 281.55</b> <b>123.9 281.55</b>	<b>121.9</b> <b>348.6</b>	<b>135.05</b> <b>348.6</b>	



ELEV 13	<b>D</b>	TDZE 13
---------	----------	---------



500	3000	FRNKY	CHANT	VGSI and RNAV glidepath not coincident (VGSI Angle 3.00/TCH 67).
↑	↙	✧	tr 202°	✧



CATEGORY	A	B	C	D
RNP 0.30 DA	410-1% 397 (400-1%)			

## AUTHORIZATION REQUIRED

NE-2, 31 JAN 2019 to 28 FEB 2019

NE-2, 31 JAN 2019 to 28 FEB 2019