

# ROBER TWO ARRIVAL

NE-2, 31 JAN 2019 to 28 FEB 2019

### ARRIVAL ROUTE DESCRIPTION

**KENNEBUNK TRANSITION (ENE.ROBER2):** From over ENE VORTAC, via ENE R-217 to ASPEN INT, then via PVD R-033 direct PVD VOR/DME, then via PVD R-234 and HTO R-052 to TRAIT INT, then via HTO R-052 to PARCH INT. Thence....

**SANDY POINT TRANSITION (SEY.ROBER2):** From over SEY VOR/DME via SEY R-276 to PARCH INT. Thence....

....From PARCH INT via CCC R-085 to CCC VOR/DME. Then via CCC R-229 to ROBER INT, then via JFK R-096 to JFK VOR/DME. Expect radar vectors to final approach course.

NEW YORK APP CON  
125.7 269.0  
JOHN F KENNEDY INTL D-ATIS  
128.725 (ARR/DEP)  
117.7 (ARR-NE)  
115.4 (ARR-SW)

KENNEBUNK  
117.1 ENE  
Chan 118  
N43°25.54'-W70°36.81'  
L-32, H-11-12

MANCHESTER  
114.4 MHT  
Chan 91

ASPEN  
N42°48.96'  
W70°54.69'  
FL180  
213  
R-033  
(69)

BOSTON  
112.7 BOS  
Chan 74

GROTON  
110.85 GON  
Chan 45 (Y)

PROVIDENCE  
115.6 PVD  
Chan 103  
N41°43.47'-W71°25.78'  
L-33-34, H-10-11-12

KENNEDY  
115.9 JFK  
Chan 106  
N40°37.97'-W73°46.28'

CAVERTON  
117.2 CCC  
Chan 119  
N40°55.78'-W72°47.93'  
Expect 12000  
and 250K

ERICK  
N40°47.01'  
W72°44.52'  
Expect 9000

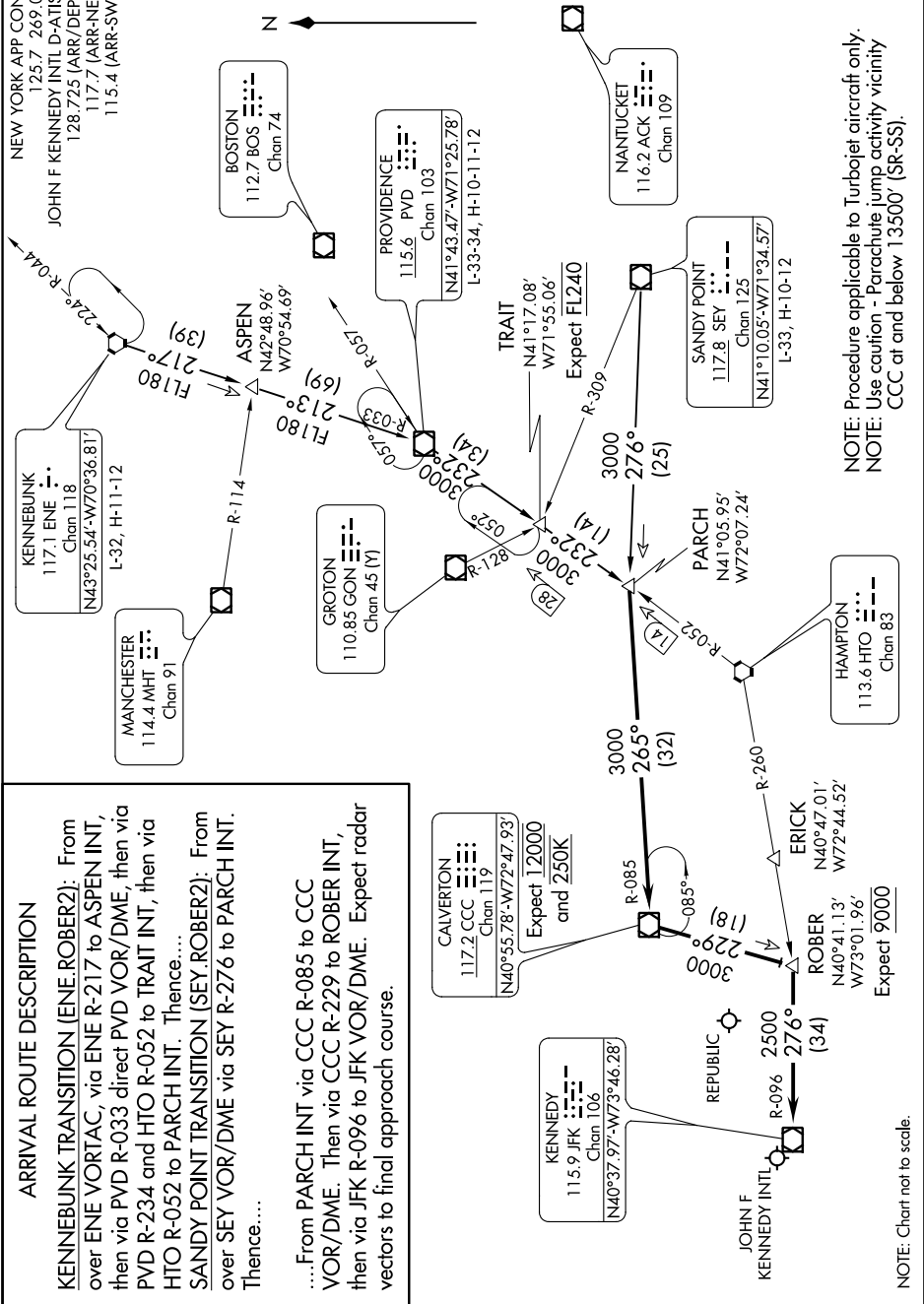
ROBER  
N40°41.13'  
W73°01.96'  
Expect 9000

PARCH  
N41°05.95'  
W72°07.24'

SANDY POINT  
117.8 SEY  
Chan 125  
N41°10.05'-W71°34.57'  
L-33, H-10-12

HAMPTON  
113.6 HTO  
Chan 83

NOTE: Procedure applicable to Turbojet aircraft only.  
NOTE: Use caution - Parachute jump activity vicinity CCC at and below 13500' (SR-SS).



NOTE: Chart not to scale.

NE-2, 31 JAN 2019 to 28 FEB 2019

# ROBER TWO ARRIVAL