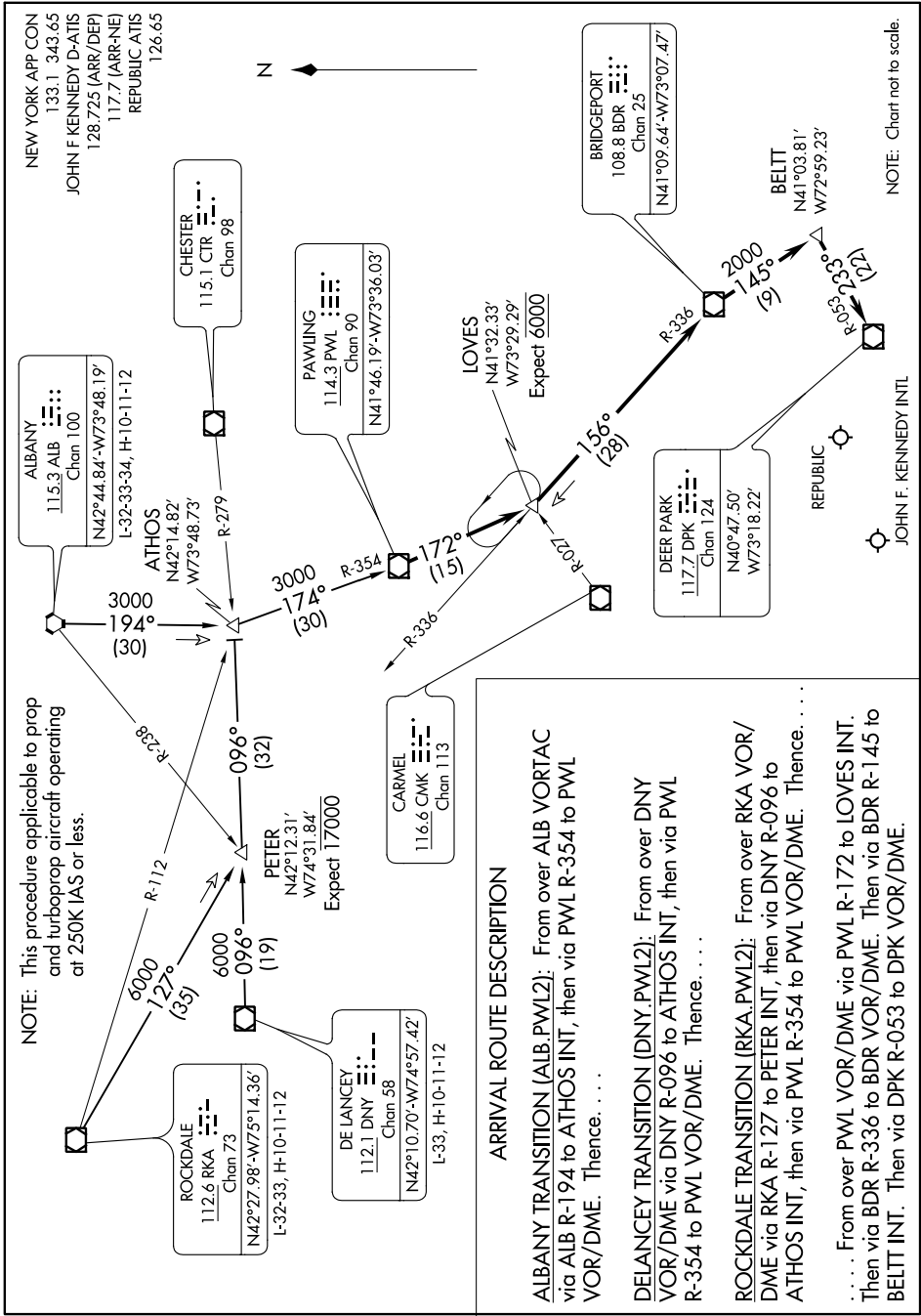


PAWLING TWO ARRIVAL

NE-2, 31 JAN 2019 to 28 FEB 2019



PAWLING TWO ARRIVAL

NE-2, 31 JAN 2019 to 28 FEB 2019

NOTE: Chart not to scale.

JOHN F. KENNEDY INTL

NEW YORK APP CON
133.1 343.65
JOHN F KENNEDY D-ATIS
128.725 (ARR/DEP)
117.7 (ARR-N/E)
REPUBLIC ATIS
126.65

ALBANY
115.3 ALB
Chan 100
N42°44.84'-W73°48.19'
L-32-33-34, H-10-11-12

ATHOS
N42°14.82'
W73°48.73'

ROCKDALE
112.6 RKA
Chan 73
N42°27.98'-W75°14.36'
L-32-33, H-10-11-12

DE LANCEY
112.1 DNY
Chan 58
N42°10.70'-W74°57.42'
L-33, H-10-11-12

PETER
N42°12.31'
W74°31.84'
Expect 17000

CARMEL
116.6 CMK
Chan 113

PAWLING
114.3 PWL
Chan 90
N41°46.19'-W73°36.03'

LOVES
N41°32.33'
W73°29.29'
Expect 6000

DEER PARK
117.7 DPK
Chan 124
N40°47.50'
W73°18.22'

BRIDGEPORT
108.8 BDR
Chan 25
N41°09.64'-W73°07.47'

BELT
N41°03.81'
W72°59.23'

REPUBLIC
JOHN F. KENNEDY INTL