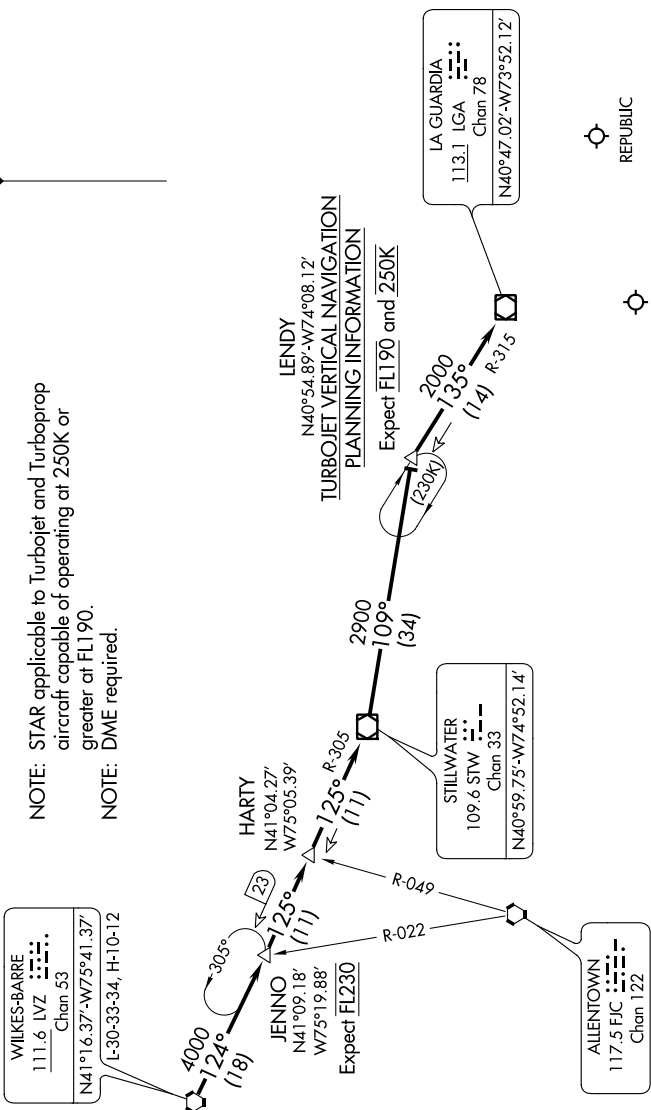


LENDY SIX ARRIVAL

NEW YORK, NEW YORK

NE-2, 31 JAN 2019 to 28 FEB 2019

NEW YORK APP CON
 128.125 289.0
 JOHN F KENNEDY INTL D-ATIS
 128.725 (ARR/DEP)
 117.7 (ARR-NE)
 115.4 (ARR-SW)
 REPUBLIC ATIS
 126.65



NOTE: STAR applicable to Turbojet and Turboprop aircraft capable of operating at 250K or greater at FL190.
 NOTE: DME required.

LENDY
 N40°54.89'-W74°08.12'
 TURBOJET VERTICAL NAVIGATION
 PLANNING INFORMATION
 Expect FL190 and 250K

REPUBLIC
 JOHN F KENNEDY INTL

NOTE: Chart not to scale.

ARRIVAL ROUTE DESCRIPTION

From over LVZ VORTAC on LVZ R-124 to JENNO, then STW R-305 to HARTY INT, then STW R-305 to STW VOR/DME, then from STW VOR/DME on STW R-109 to LENDY, then on LGA R-315 to LGA VOR/DME. Expect radar vectors to final approach course after LGA VOR/DME.

LENDY SIX ARRIVAL

NEW YORK, NEW YORK

NE-2, 31 JAN 2019 to 28 FEB 2019