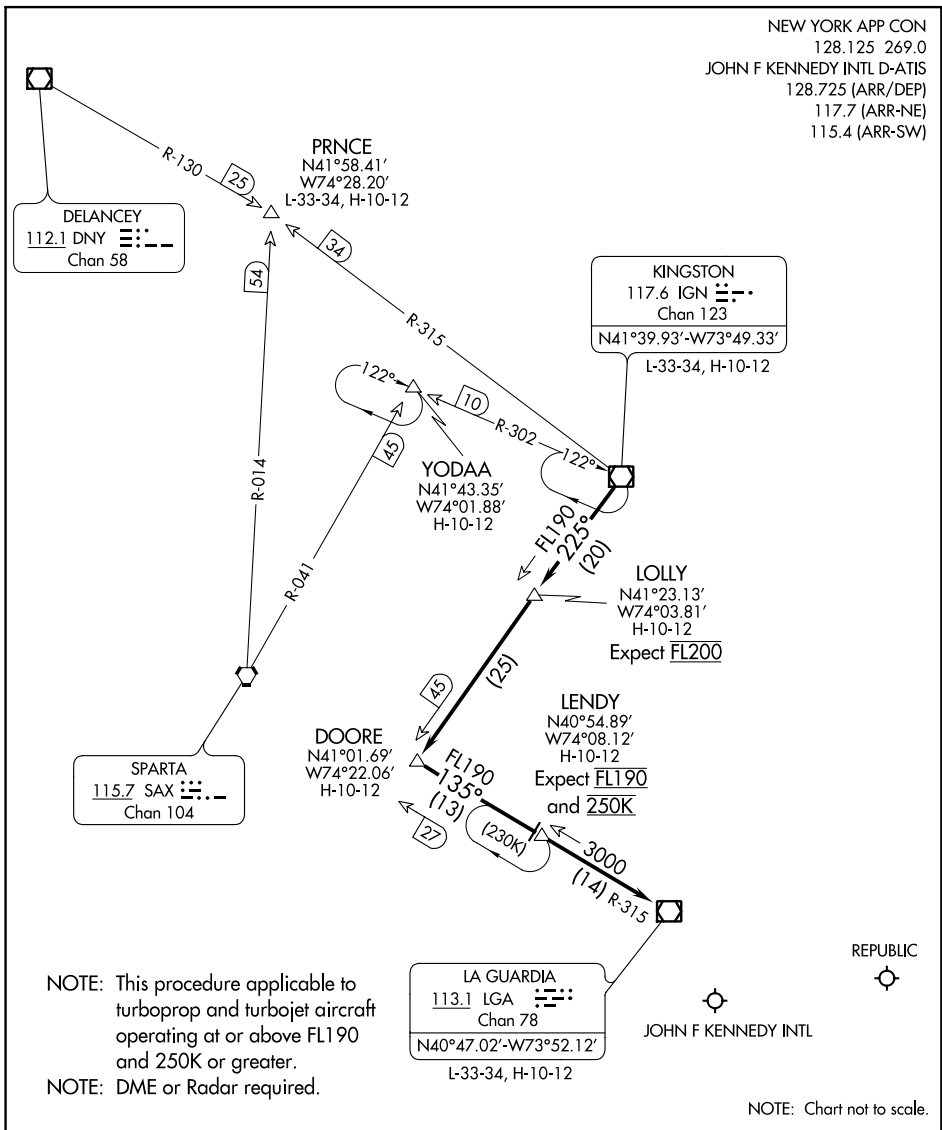


KINGSTON ONE ARRIVAL

NEW YORK, NEW YORK

NEW YORK APP CON
 128.125 269.0
 JOHN F KENNEDY INTL D-ATIS
 128.725 (ARR/DEP)
 117.7 (ARR-NE)
 115.4 (ARR-SW)



NE-2, 31 JAN 2019 to 28 FEB 2019

NE-2, 31 JAN 2019 to 28 FEB 2019

NOTE: This procedure applicable to turboprop and turbojet aircraft operating at or above FL190 and 250K or greater.
 NOTE: DME or Radar required.

NOTE: Chart not to scale.

ARRIVAL ROUTE DESCRIPTION

From over IGN VOR/DME on IGN R-225 to LOLLY/20 DME, then on IGN R-225 to DOORE INT, then on LGA R-315 to LENDY/14 DME, then on LGA R-315 to LGA VOR/DME. Expect radar vectors to final approach course after LGA VOR/DME.

KINGSTON ONE ARRIVAL

NEW YORK, NEW YORK