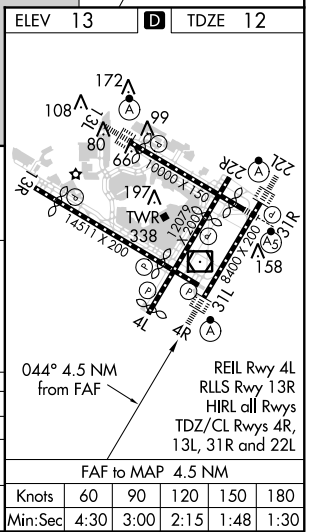
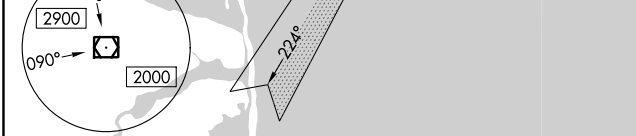
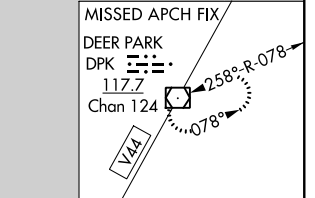
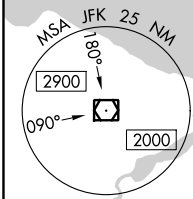
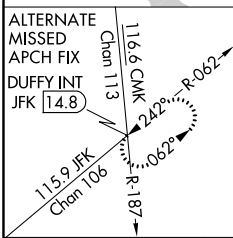
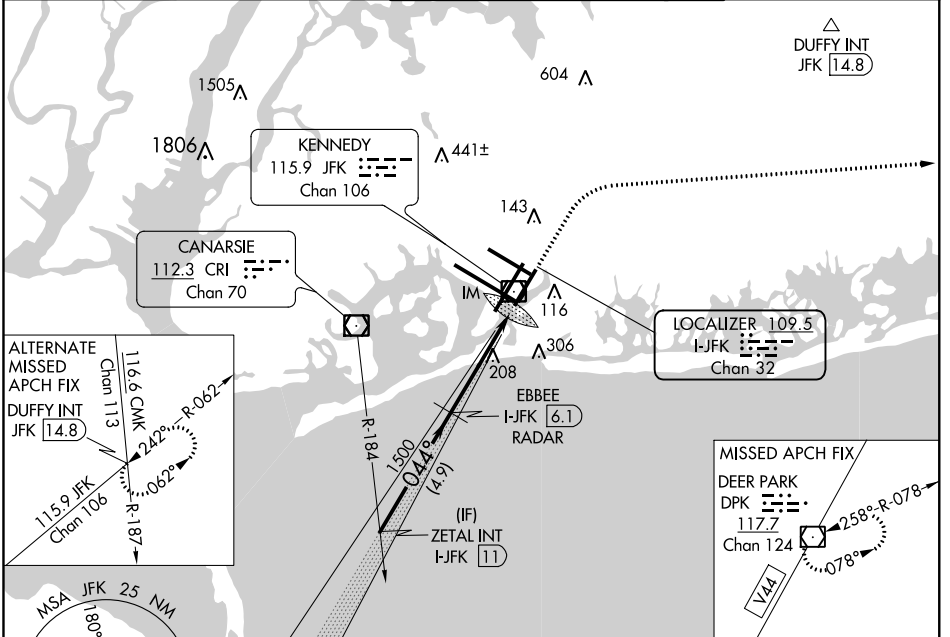


LOC/DME I-JFK	APP CRS	Rwy Idg	8400
109.5	044°	TDZE	12
Chan 32		Apt Elev	13

ILS or LOC RWY 4R

JOHN F KENNEDY INTL (JFK)

RADAR required for procedure entry.		ALSF-2	MISSED APPROACH: Climb to 800 then climbing right turn to 4000 heading 099° and V44 to DPK VOR/DME and hold.		
Simultaneous approach authorized.		(A)			
D-ATIS	NEW YORK APP CON	KENNEDY TOWER		GND CON	CLNC DEL
(ARR/DEP)(ARR-NE) (ARR-SW)		Rwys 4R/22L and 13L/31R	119.1 281.55	121.9	135.05
128.725 117.7 115.4	128.125 269.0	Rwys 4L/22R and 13R/31L	123.9 281.55	348.6	348.6
				CPDLC	



ZETAL INT I-JFK (11)	EBBEE I-JFK (6.1) RADAR	800	4000	DPK
2000	1500	↑	hdg 099°	(V44)
GS 3.00° TCH 53	* I-JFK (3.1)			(DPK)
VGS1 and ILS glidepath not coincident (VGS1 Angle 3.00/TCH 69).	I-JFK (1.6)			
	IM			
	* LOC only.			
	4.9 NM	3 NM	1.4 NM	0.1
CATEGORY	A	B	C	D
S-ILS 4R		212/18	200 (200-½)	
S-LOC 4R	540/24	528 (600-½)	540/55	528 (600-1)
CIRCLING	640-1	627 (700-1)	640-¾ 627 (700-¾)	660-2 647 (700-2)

NE-2, 31 JAN 2019 to 28 FEB 2019

NE-2, 31 JAN 2019 to 28 FEB 2019