

LOC/DME I-HIQ <b>110.9</b> Chan <b>46</b>	APP CRS <b>044°</b>	Rwy Idg <b>11010</b> TDZE <b>13</b> Apt Elev <b>13</b>
---	------------------------	--

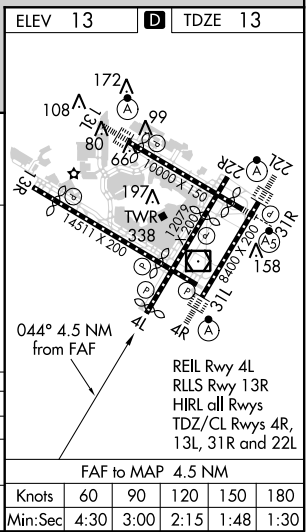
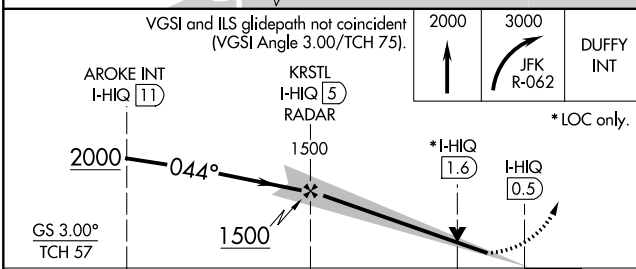
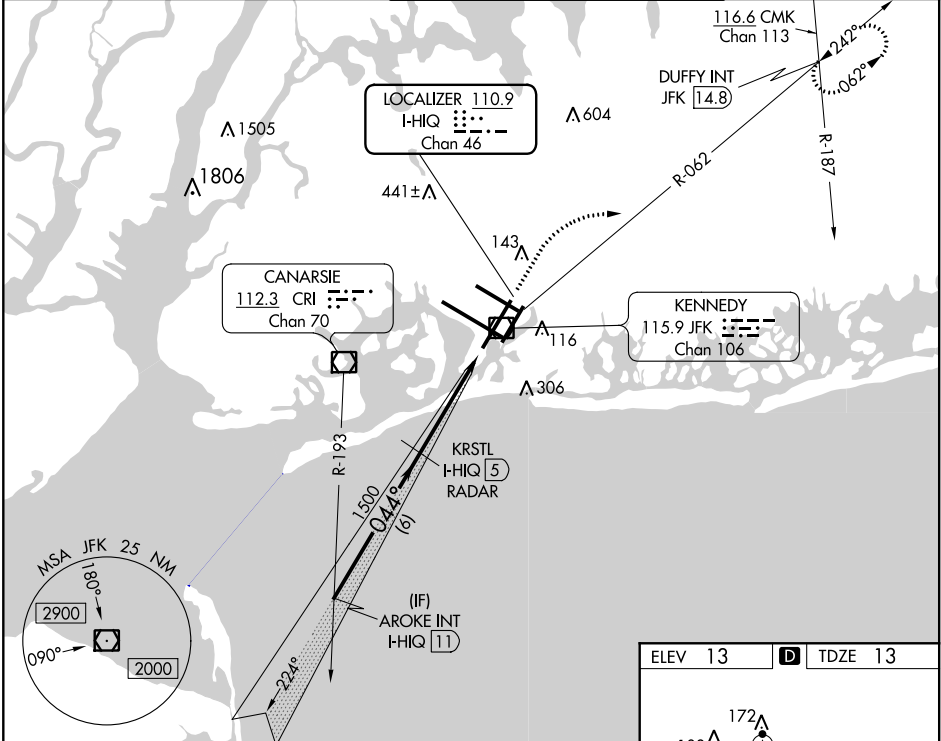
# ILS or LOC RWY 4L

JOHN F KENNEDY INTL (JFK)

RADAR required for procedure entry. DME or RADAR required for LOC only.  
 Simultaneous approach authorized.

MISSED APPROACH: Climb to 2000 then climbing right turn to 3000 on JFK VOR/DME R-062 to DUFFY INT/JFK 1.4.8 DME and hold.

D-ATIS (ARR/DEP) (ARR-NE) (ARR-SW) <b>128.725 117.7 115.4</b>	NEW YORK APP CON <b>128.125 269.0</b>	KENNEDY TOWER Rwys 4R/22L and 13L/31R <b>119.1 281.55</b> Rwys 4L/22R and 13R/31L <b>123.9 281.55</b>	GND CON <b>121.9 135.05</b> <b>348.6 348.6</b>	CLNC DEL <b>135.05</b> <b>348.6</b>	CPDLC
---	--	---	--	---	-------



CATEGORY	A	B	C	D
S-ILS 4L	223/40		210 (300-¾)	
S-LOC 4L	460/55	447 (500-1)	460-1¾	447 (500-1¾)
<b>C</b> CIRCLING	640-1	627 (700-1)	640-1¾ 627 (700-1¾)	660-2 647 (700-2)

NE-2, 31 JAN 2019 to 28 FEB 2019

NE-2, 31 JAN 2019 to 28 FEB 2019