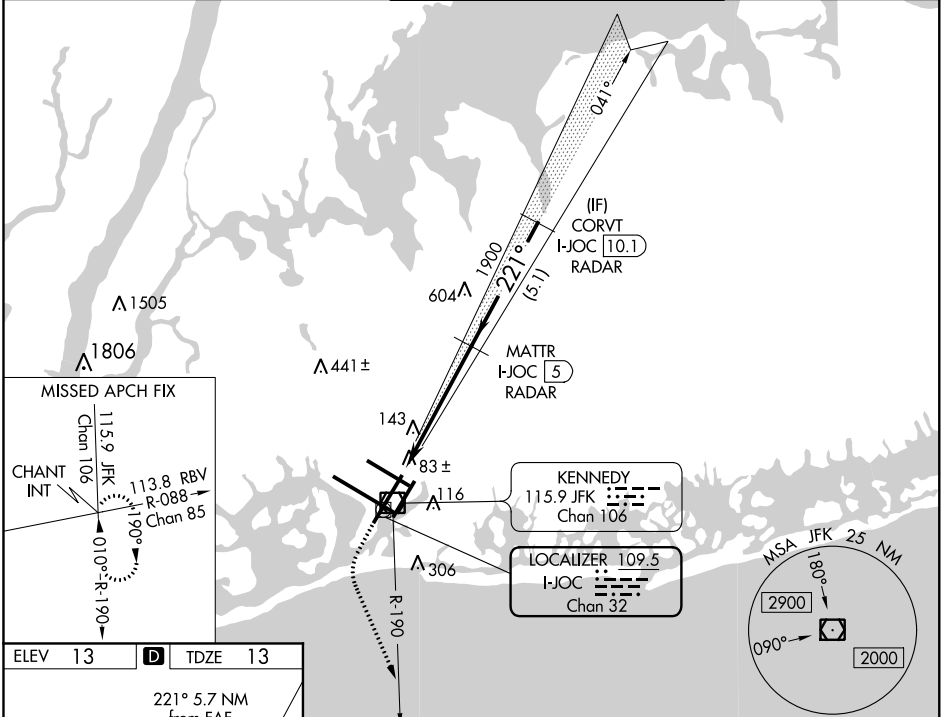


LOC/DME I-JOC <b>109.5</b> Chan <b>32</b>	APP CRS <b>221°</b>	Rwy Idg <b>7795</b> TDZE <b>13</b> Apt Elev <b>13</b>
---	------------------------	---

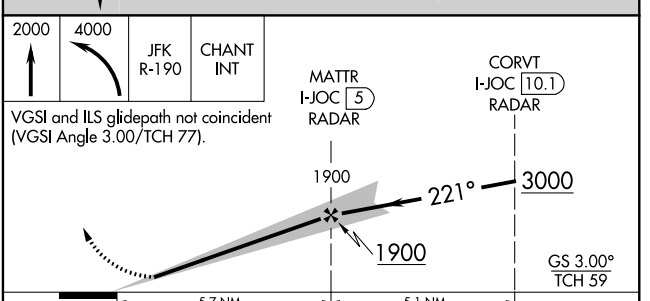
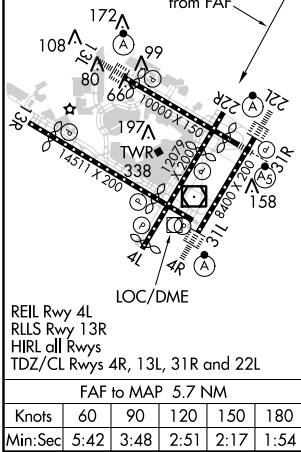
# ILS or LOC RWY 22R

JOHN F KENNEDY INTL (JFK)

RADAR required for procedure entry.			MISSED APPROACH: Climb to 2000 then climbing left turn to 4000 on JFK VOR/DME R-190 to CHANT INT and hold.			
Simultaneous approach authorized.						
D-ATIS (ARR/DEP) (ARR-NE) (ARR-SW) <b>128.725 117.7 115.4</b>	NEW YORK APP CON <b>128.125 269.0</b>	KENNEDY TOWER Rwys 4R/22L and 13L/31R <b>119.1 281.55</b> Rwys 4L/22R and 13R/31L <b>123.9 281.55</b>	GND CON <b>121.9 348.6</b>	CLNC DEL <b>135.05 348.6</b>	CPDLC	



ELEV 13	<b>D</b>	TDZE 13
---------	----------	---------



CATEGORY	A	B	C	D
S-ILS 22R	263/40 250 (300-¾)			
S-LOC 22R	460/50 447 (500-1)	460/60 447 (500-1¼)	460-1½ 447 (500-1½)	460-1½ 447 (500-1½)
<input checked="" type="checkbox"/> CIRCLING	640-1 627 (700-1)	640-1¾ 627 (700-1¾)	660-2 647 (700-2)	660-2 647 (700-2)

NE-2, 31 JAN 2019 to 28 FEB 2019

NE-2, 31 JAN 2019 to 28 FEB 2019