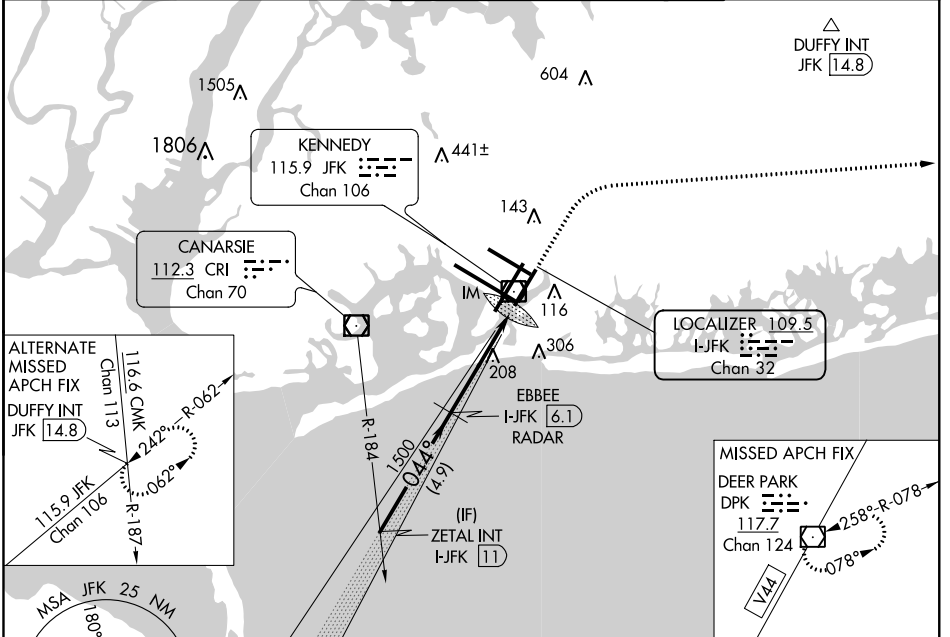


ILS RWY 4R (CAT II & III)

JOHN F KENNEDY INTL (JFK)

LOC/DME I-JFK	APP CRS	Rwy Idg	8400
109.5	044°	TDZE	12
Chan 32		Apt Elev	13

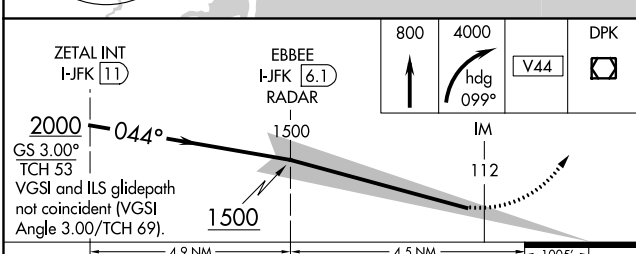
RADAR required for procedure entry.		ALSIF-2	MISSED APPROACH: Climb to 800 then climbing right turn to 4000 heading 099° and V44 to DPK VOR/DME and hold.		
Simultaneous approach authorized.					
D-ATIS (ARR/DEP) (ARR-NE) (ARR-SW)	NEW YORK APP CON	KENNEDY TOWER		GND CON	CLNC DEL
128.725 117.7 115.4	128.125 269.0	Rwys 4R/22L and 13L/31R 119.1 281.55		121.9	135.05
		Rwys 4L/22R and 13R/31L 123.9 281.55		348.6	348.6



NE-2, 31 JAN 2019 to 28 FEB 2019

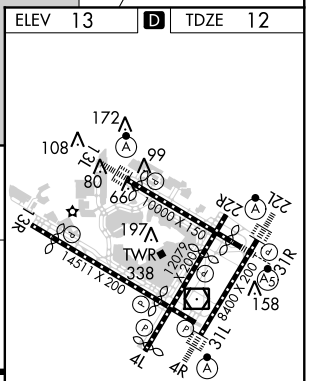
NE-2, 31 JAN 2019 to 28 FEB 2019

ELEV 13	TDZE 12
---------	---------



CATEGORY	A	B	C	D
S-ILS 4R	CAT II RA 112/12 100 DA 112			
S-ILS 4R	CAT III RVR 06			

CATEGORY II & III ILS - SPECIAL AIRCREW & AIRCRAFT CERTIFICATION REQUIRED



REIL Rwy 4L
 RLLS Rwy 13R
 HIRL all Rwys
 TDZ/CL Rwys 4R, 13L, 31R and 22L