

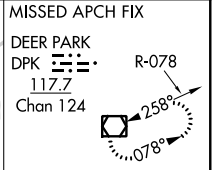
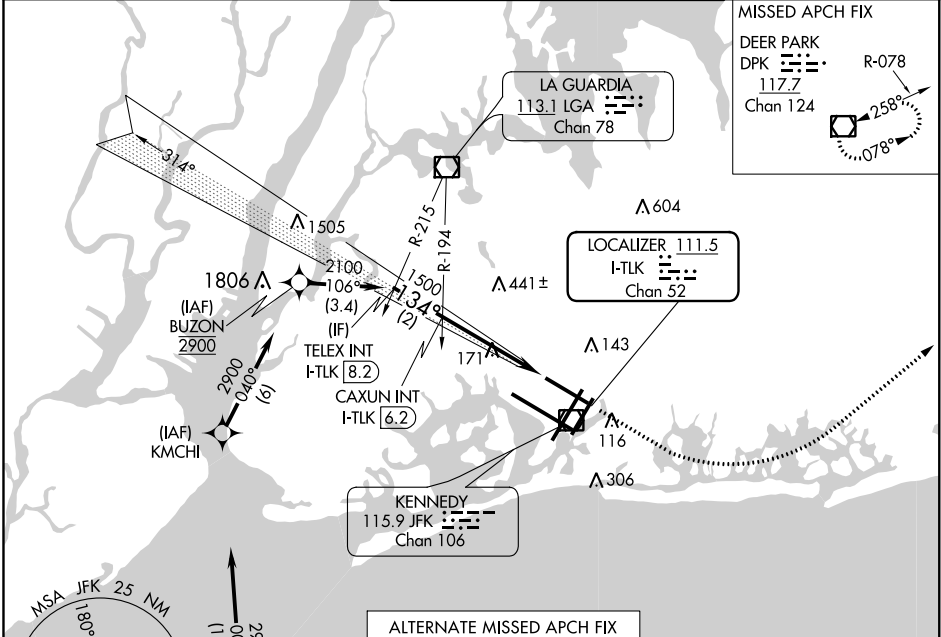
LOC/DME I-TLK <b>111.5</b> Chan <b>52</b>	APP CRS <b>134°</b>	Rwy Idg <b>9093</b> TDZE <b>12</b> Apt Elev <b>13</b>
---	------------------------	---

**ILS RWY 13L (CAT II)**  
JOHN F KENNEDY INTL (JFK)

RNAV 1-GPS or RADAR required for procedure entry.  
From COVIR, KMCHI, BUZON: RNAV-1 GPS required.

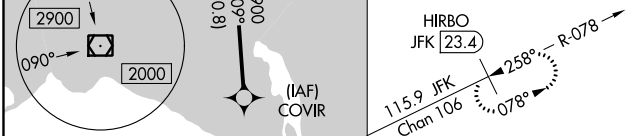
ALSF-2  
MISSED APPROACH: Climb to 600 then climbing left turn to 4000 direct DPK VOR/DME and hold.

D-ATIS (ARR/DEP) (ARR-NE) (ARR-SW) <b>128.725 117.7 115.4</b>	NEW YORK APP CON <b>128.125 269.0</b>	KENNEDY TOWER Rwys 4R/22L and 13L/31R <b>119.1 281.55</b> Rwys 4L/22R and 13R/31L <b>123.9 281.55</b>	GND CON <b>121.9 135.05 348.6</b>	CLNC DEL <b>135.05 348.6</b>	CPDLC
---	--	---	--------------------------------------	---------------------------------	-------

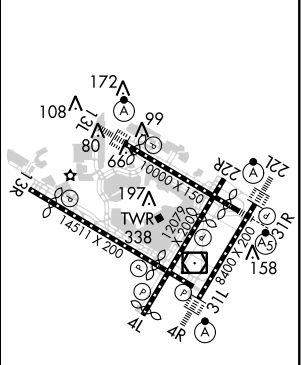
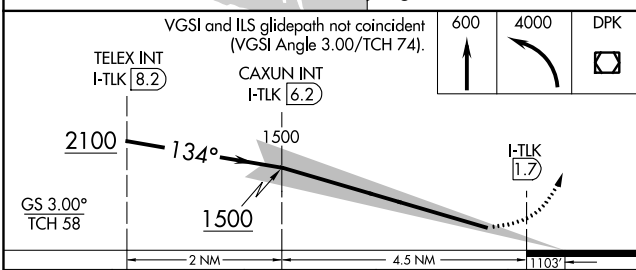


NE-2, 31 JAN 2019 to 28 FEB 2019

NE-2, 31 JAN 2019 to 28 FEB 2019



ELEV 13	TDZE 12
---------	---------



CATEGORY	A	B	C	D
S-ILS 13L				
RA 150/16 150 DA 162				

**CATEGORY II ILS - SPECIAL AIRCREW & AIRCRAFT CERTIFICATION REQUIRED**

REIL Rwy 4L  
RLS Rwy 13R  
HIRL all Rwys  
TDZ/CL Rwys 4R, 13L, 31R and 22L