

GREK1 SIX DEPARTURE

AL-610 (FAA)

JOHN F KENNEDY INTL (JFK)

NEW YORK, NEW YORK

NE-2, 31 JAN 2019 to 28 FEB 2019

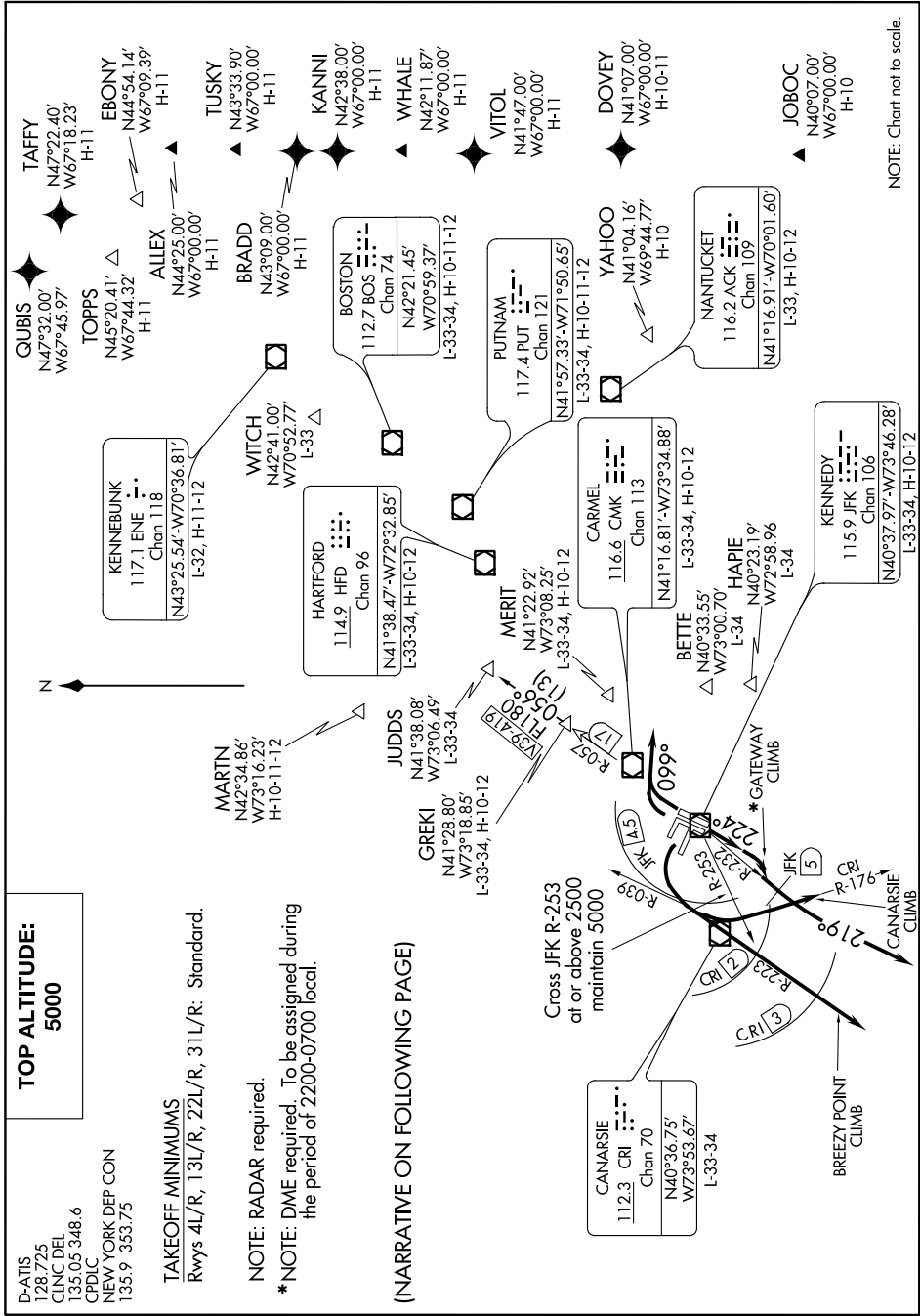
**TOP ALTITUDE:
5000**

D-ATIS
128.725
CLNC DEL
135.05 348.6
CPDLC
NEW YORK DEP CON
135.9 353.75

TAKEOFF MINIMUMS
Rwys 4L/R, 13L/R, 22L/R, 31L/R: Standard.

NOTE: RADAR required.
*** NOTE: DME required. To be assigned during the period of 2200-0700 local.**

(NARRATIVE ON FOLLOWING PAGE)



NOTE: Chart not to scale.

NE-2, 31 JAN 2019 to 28 FEB 2019

GREK1 SIX DEPARTURE

NEW YORK, NEW YORK

JOHN F KENNEDY INTL (JFK)