

# BETTE SIX DEPARTURE

AL-610 (FAA)

JOHN F KENNEDY INTL (JFK)

NEW YORK, NEW YORK

NE-2, 31 JAN 2019 to 28 FEB 2019

**TOP ALTITUDE:**  
**5000**

D-ATIS  
128.725  
CLNC DEL  
135.05 348.6  
CRDLC  
NEW YORK DEP CON  
135.9 353.75

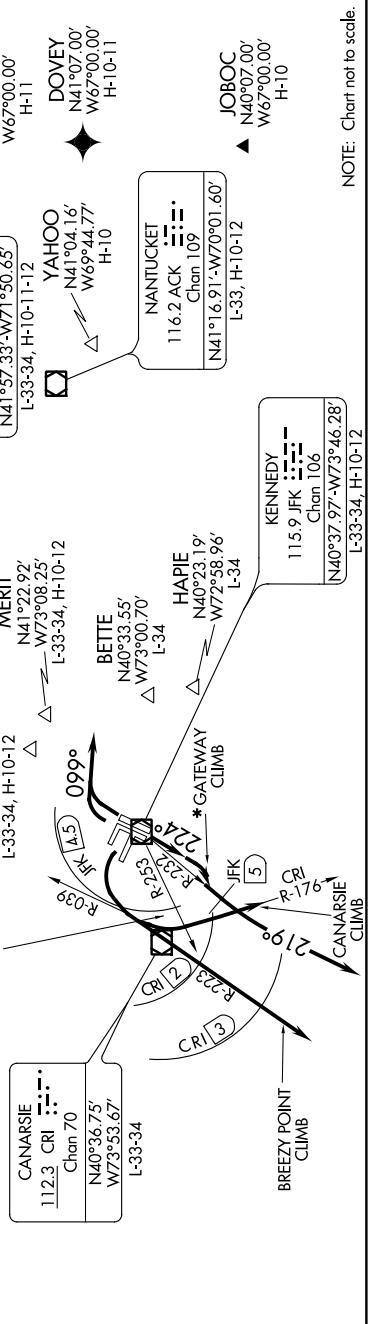
TAKEOFF MINIMUMS  
Rwys 4L/R, 13L/R, 22L/R, 31L/R: Standard.

NOTE: RADAR required.

\*NOTE: DME required. To be assigned during the period of 2200-0700 local.

(NARRATIVE ON FOLLOWING PAGE)

Cross JFK R-253 at or above 2500, maintain 5000



NOTE: Chart not to scale.

NE-2, 31 JAN 2019 to 28 FEB 2019

# BETTE SIX DEPARTURE