

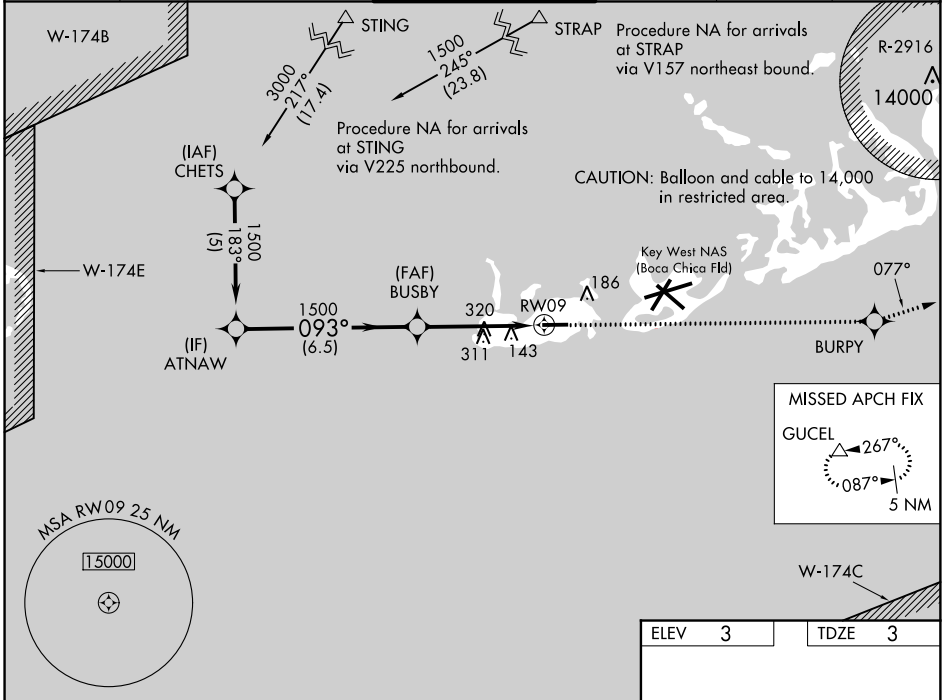
WAAS CH 40405 W09A	APP CRS 093°	Rwy Idg 4801 TDZE 3 Apt Elev 3
--	------------------------	---

RNAV (GPS) RWY 9

KEY WEST INTL (EYW)

<p>⚠ For uncompensated Baro-VNAV systems, LNAV/VNAV NA below -15°C (5°F) or above 48°C (118°F). DME/DME RNP-0.3 NA. Visibility reduction by helicopters NA. If local altimeter setting not received, use Key West NAS/ Boca Chica Fld altimeter setting.</p> <p>W ASR</p>	<p>MISSED APPROACH: Climb to 3000 direct BURPY and via 077° track to GUCEL and hold.</p>
---	--

ATIS 119.675	NAVY KEY WEST APP CON * 124.025 313.7	KEY WEST TOWER * 118.2 (CTAF) 0 257.8	GND CON 121.9	CLNC DEL 121.9	UNICOM 122.95
------------------------	---	---	-------------------------	--------------------------	-------------------------



SE-3, 31 JAN 2019 to 28 FEB 2019

SE-3, 31 JAN 2019 to 28 FEB 2019

Procedure Turn NA	ATNAW	BUSBY	3000	BURPY	077° tr	GUCEL
GP 3.00° TCH 35	1500	1500	↑	✧	↖	△
	6.5 NM	4.5 NM				
CATEGORY	A	B	C	D		
LPV DA	253-1		250 (300-1)			
LNAV/VNAV DA	425-1½		422 (500-1½)			
LNAV MDA	580-1	577 (600-1)	580-1½	577 (600-1½)	580-1¾	577 (600-1¾)
CIRCLING	580-1	577 (600-1)	580-1½	577 (600-1½)	620-2	617 (700-2)

ELEV 3 | TDZE 3

093° to RWY 09

4801 X 100

46±

TWR 79 71

MIRL Rwy 9-27

REIL Rws 9 and 27