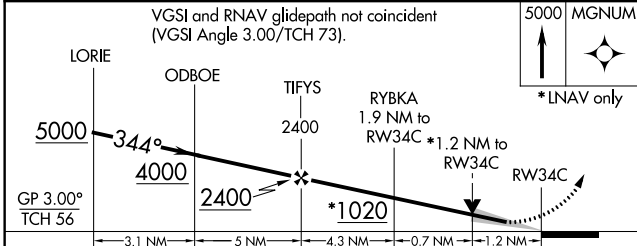
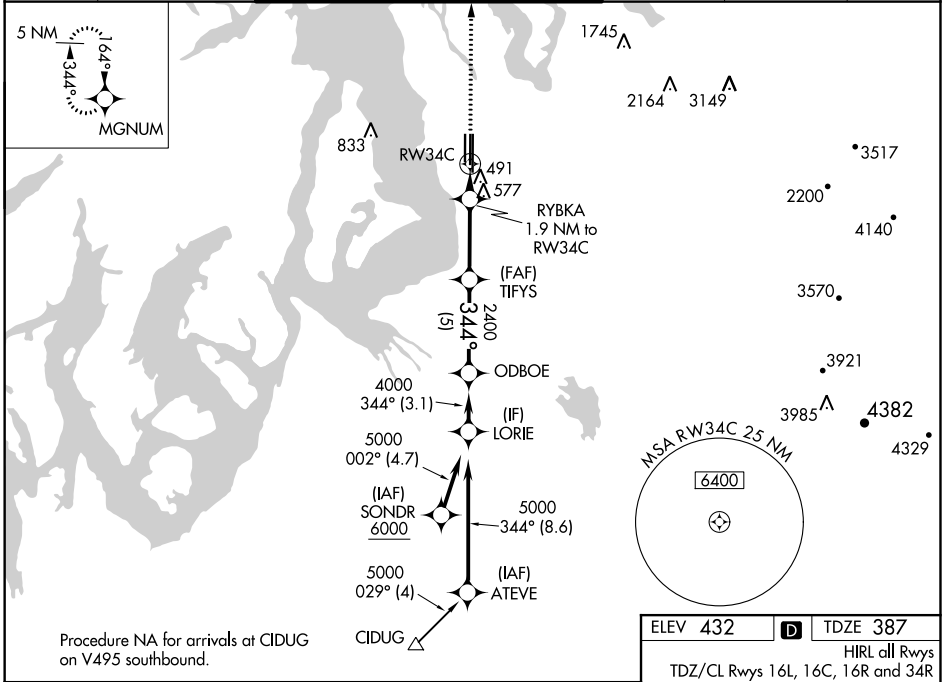


WAAS CH 77710 W34B	APP CRS 344°	Rwy Idg 9426 TDZE 387 Apt Elev 432
--	------------------------	---

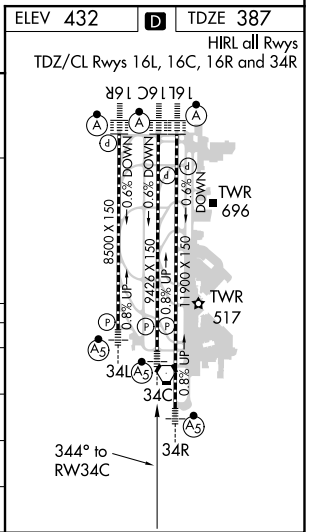
RNAV (GPS) Y RWY 34C

SEATTLE-TACOMA INTL (SEA)

RNP APCH. ▼ Simultaneous approach authorized with Rwy 34L. LNAV procedure NA during simultaneous operations. Use of FD or AP providing RNAV track guidance required during simultaneous operations. For uncompensated Baro-VNAV systems, LNAV/VNAV NA below -6°C (22°F) or above 54°C (130°F).		MALSR 	MISSED APPROACH: Climb to 5000 direct MGNUM and hold, continue climb-in-hold to 5000.	
D-ATIS 118.0	SEATTLE APP CON 133.65 273.45	SEATTLE TOWER 119.9 239.3 (Rwys 16L, 16C, 34C, 34R) 120.95 239.3 (Rwys 16R, 34L)	GND CON 121.7	CLNC DEL 128.0
			CPDLC	



CATEGORY	A	B	C	D
LPV DA		610/24	223 (200-½)	
LNAV/ VNAV DA		839/50	452 (500-1)	
LNAV MDA	880/24	493 (500-½)	880/55	493 (500-1)
CIRCLING	1000-1	568 (600-1)	1000-1½ 568 (600-1½)	1000-2 568 (600-2)



NW-1, 31 JAN 2019 to 28 FEB 2019

NW-1, 31 JAN 2019 to 28 FEB 2019