


RNAV (RNP) Z RWY 34R

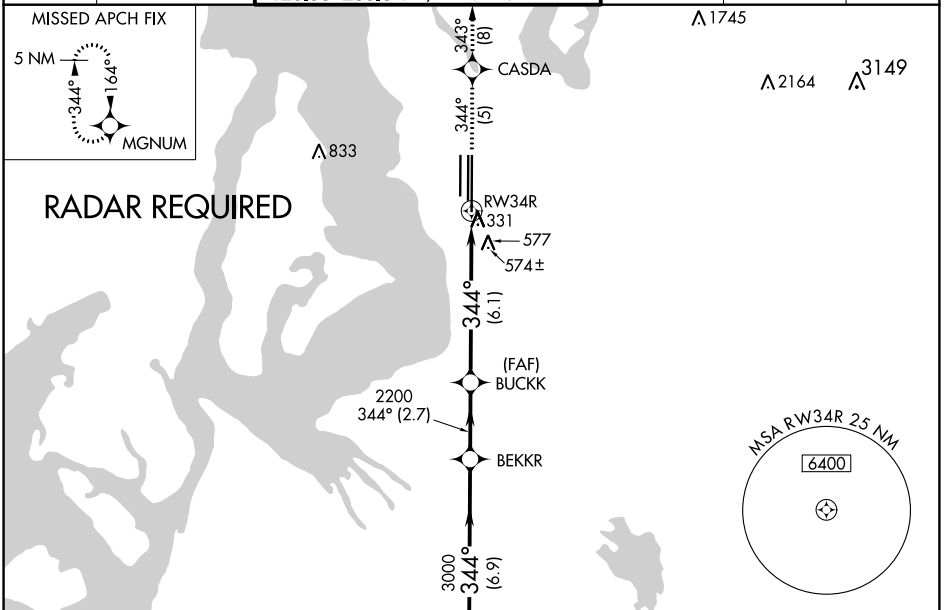
SEATTLE-TACOMA INTL (SEA)

APP CRS 344°	Rwy Idg 11900 TDZE 372 Apt Elev 433
------------------------	--

▼ Simultaneous approach authorized with Rwy 34L. GPS required.
For uncompensated Baro-VNAV systems, procedure NA below -6°C (22°F) or above 54°C (130°F). For inop ALS, increase RNP 0.28 all Cats visibility to 1½ mile and RNP 0.30 all Cats visibility to 2 miles. Use of FD or AP providing RNAV track guidance required during simultaneous operations.

MALSR  MISSED APPROACH: Climb to 5000 on track 344° to CASDA and on track 343° to MGNUM and hold, continue climb-in-hold to 5000.

D-ATIS 118.0	SEATTLE APP CON 133.65 273.45	SEATTLE TOWER 119.9 239.3 (Rwys 16L, 16C, 34C, 34R) 120.95 239.3 (Rwys 16R, 34L)	GND CON 121.7	CLNC DEL 128.0	CPDLC
------------------------	---	--	-------------------------	--------------------------	-------



VGSI and RNAV glidepath not coincident (VGSI Angle 2.75/TCH 81).

NEEL

5000

344°

BEKKR

3000

BUCKK

2200

RW34R

GP 2.75° TCH 60

6.9 NM

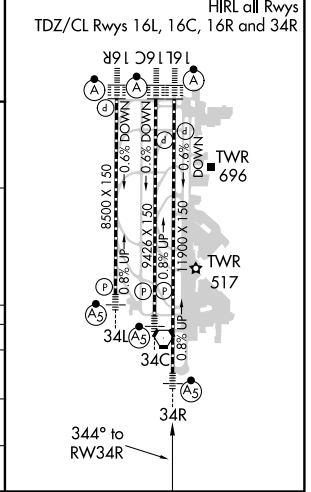
2.7 NM

6.1 NM

5000 CASDA tr 344°

tr 343° MGNUM

ELEV 433	 TDZE 372
----------	--



CATEGORY	A	B	C	D
RNP 0.28 DA		715/41	343 (300-7%)	
RNP 0.30 DA		880-1½	508 (500-1½)	

AUTHORIZATION REQUIRED

NW-1, 31 JAN 2019 to 28 FEB 2019

NW-1, 31 JAN 2019 to 28 FEB 2019