

RNAV (RNP) Z RWY 16C

SEATTLE-TACOMA INTL (SEA)

APP CRS	Rwy Idg	9426
164°	TDZE	430
	Apt Elev	433

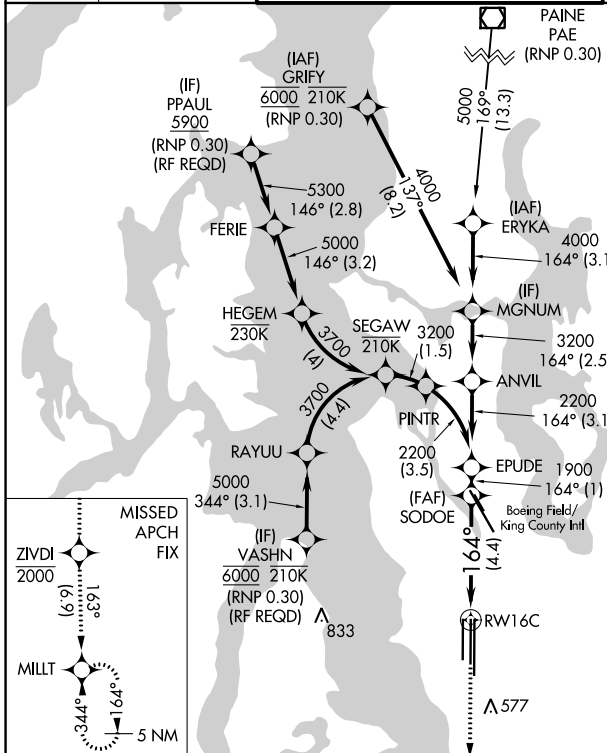
For uncompensated Baro-VNAV systems, procedure NA below -6°C (22°F) or above 54°C (130°F). GPS required. See additional requirements on adjacent information page. For inop ALS, increase RNP 0.12 all Cats visibility to RVR 5200, and increase RNP 0.30 all Cats visibility to 1 3/8 SM.

ALSF-2

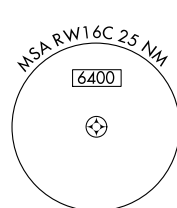


MISSED APPROACH: Climb direct ZIVDI to cross ZIVDI at or below 2000, then climb to 5000 on track 163° to MILLT and hold, continue climb-in-hold to 5000.

D-ATIS	SEATTLE APP CON	SEATTLE TOWER	GND CON	CLNC DEL	CPDLC
118.0	133.65 273.45	119.9 239.3 (Rwys 16L, 16C, 34C, 34R) 120.95 239.3 (Rwys 16R, 34L)	121.7	128.0	

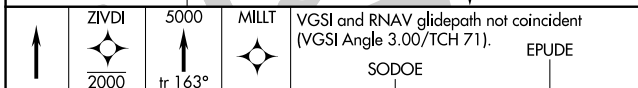
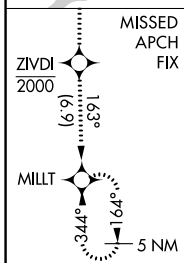


Procedure NA for arrival on PAE VOR/DME airway radials 163 CW 236.

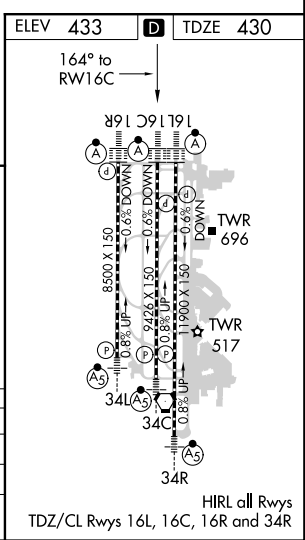
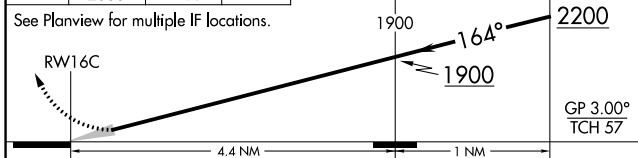


RADAR REQUIRED

- △ 1745
- △ 2164
- △ 3149



VGSI and RNAV glidepath not coincident (VGSI Angle 3.00/TCH 71).



CATEGORY	A	B	C	D
RNP 0.12 DA		758/29	328 (400-5%)	
RNP 0.30 DA		834/43	404 (500-7%)	

AUTHORIZATION REQUIRED

NW-1, 31 JAN 2019 to 28 FEB 2019

NW-1, 31 JAN 2019 to 28 FEB 2019