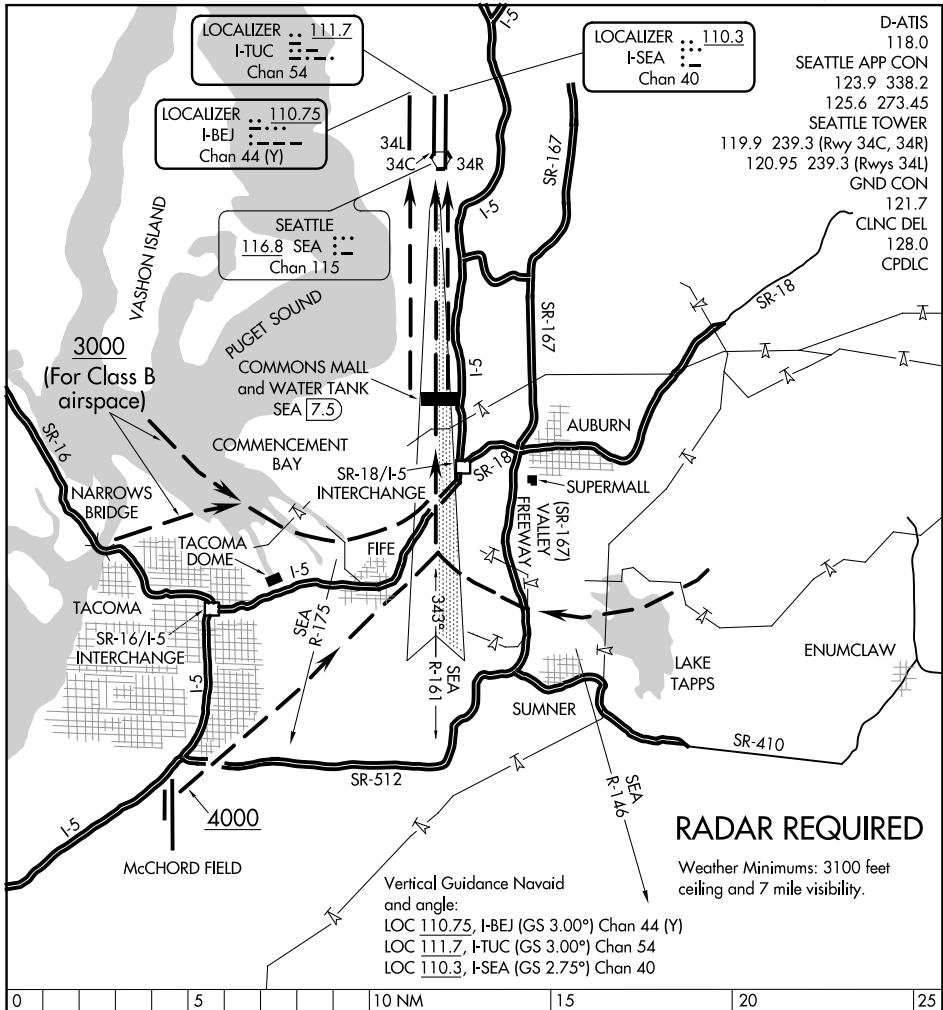


# MALL VISUAL RWY 34R/C/L

SEATTLE-TACOMA INTL (SEA)  
SEATTLE, WASHINGTON

AL-582 (FAA)



NW-1, 31 JAN 2019 to 28 FEB 2019

NW-1, 31 JAN 2019 to 28 FEB 2019

- D-ATIS 118.0
- SEATTLE APP CON 123.9 338.2
- 125.6 273.45
- SEATTLE TOWER 119.9 239.3 (Rwy 34C, 34R)
- 120.95 239.3 (Rwys 34L)
- GND CON 121.7
- CLNC DEL 128.0
- CPDLC

LOCALIZER .. 111.7  
I-TUC .. ..  
Chan 54

LOCALIZER .. 110.3  
I-SEA .. ..  
Chan 40

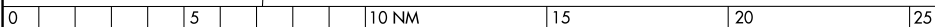
LOCALIZER .. 110.75  
I-BEJ .. ..  
Chan 44 (Y)

SEATTLE  
116.8 SEA .. ..  
Chan 115

## RADAR REQUIRED

Weather Minimums: 3100 feet ceiling and 7 mile visibility.

Vertical Guidance Navaid and angle:  
LOC 110.75, I-BEJ (GS 3.00°) Chan 44 (Y)  
LOC 111.7, I-TUC (GS 3.00°) Chan 54  
LOC 110.3, I-SEA (GS 2.75°) Chan 40



## MALL VISUAL APPROACH RWY 34R/C/L

When the ceiling is at least 3100' and visibility is at least 7 miles, aircraft may be vectored towards Commencement Bay or McChord Field or Lake Tapps for a Mall Visual Runway 34R/C/L Approach. When cleared for this approach; proceed inbound visually using the depicted landmarks to the centerline of runway 34R/C/L. Turn final before or over the interchange of State Road 18 (SR-18) and Interstate 5. Be established on the localizer or runway centerline at the Commons Mall and Water Tank (7.5 DME) and proceed visually to runway 34R/C/L.

# MALL VISUAL RWY 34R/C/L

47°27'N-122°19'W

SEATTLE, WASHINGTON  
SEATTLE-TACOMA INTL (SEA)