

LOC/DME I-BEJ 110.75 Chan 44 (Y)	APP CRS 344°	Rwy ldg TDZE 8500 379 Apt Elev 433
---	------------------------	---

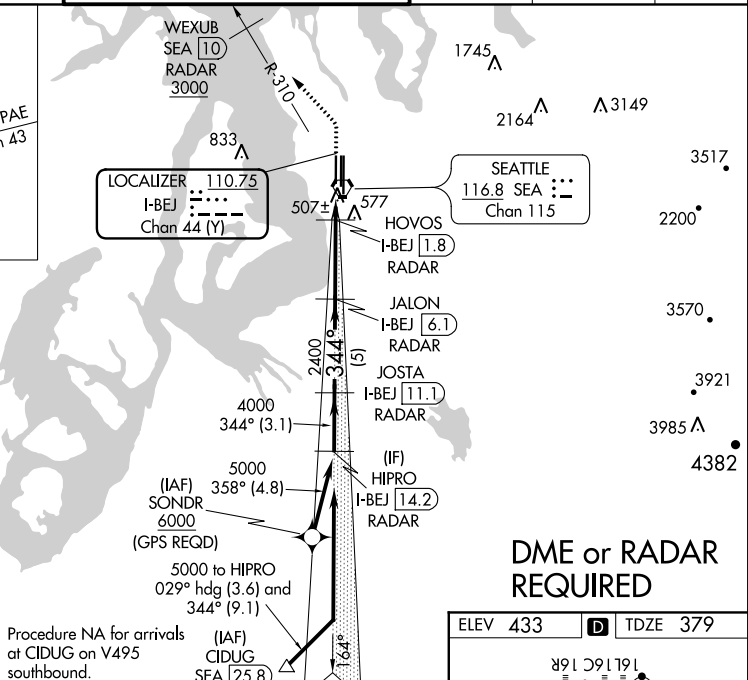
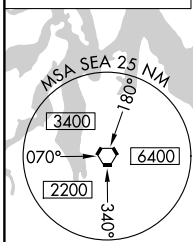
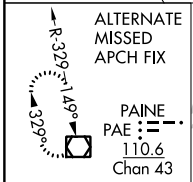
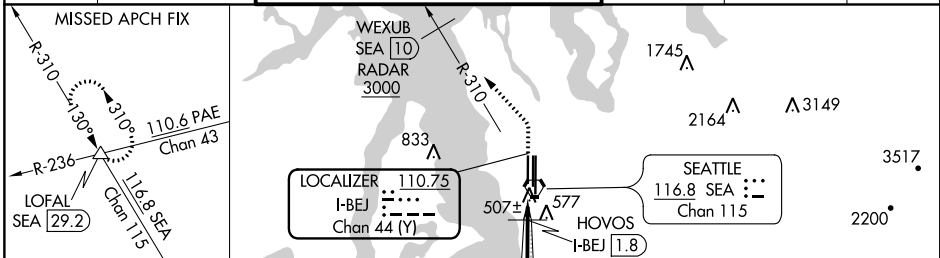
ILS or LOC RWY 34L

SEATTLE-TACOMA INTL (SEA)

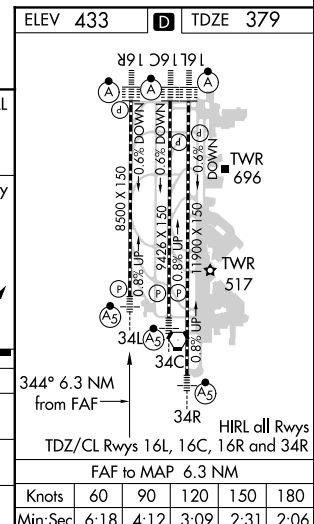
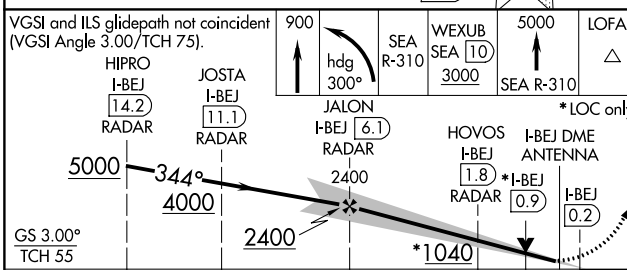
▼ DME or RADAR required.
Simultaneous approach authorized with Rwy 34R/C.
RVR 1800 authorized with use of FD or AP or HUD to DA.

MALS
MISSED APPROACH: Climb to 900 then climbing left turn on heading 300° and on SEA VORTAC R-310 to cross WEXUB/10 DME/RADAR at or above 3000, then climb to 5000 on SEA VORTAC R-310 to LOFAL/SEA 29.2 DME and hold.

D-ATIS 118.0	SEATTLE APP CON 133.65 273.45	SEATTLE TOWER 119.9 239.3 (Rwys 16L, 16C, 34C, 34R) 120.95 239.3 (Rwys 16R, 34L)	GND CON 121.7	CLNC DEL 128.0	CPDLC
------------------------	---	--	-------------------------	--------------------------	-------



DME or RADAR REQUIRED



CATEGORY	A	B	C	D
S-ILS 34L #	579/24 200 (200-½)			
S-LOC 34L	760/24	381 (400-½)	760/40	381 (400-¾)
CIRCLING	1000-1	567 (600-1)	1000-1½ 567 (600-1½)	1000-2 567 (600-2)

NW-1, 31 JAN 2019 to 28 FEB 2019

NW-1, 31 JAN 2019 to 28 FEB 2019