

| | | |
|--|------------------------|--|
| LOC/DME I-SNQ 110.3 Chan 40 | APP CRS 164° | Rwy Idg 11900 TDZE 433 Apt Elev 433 |
|--|------------------------|--|

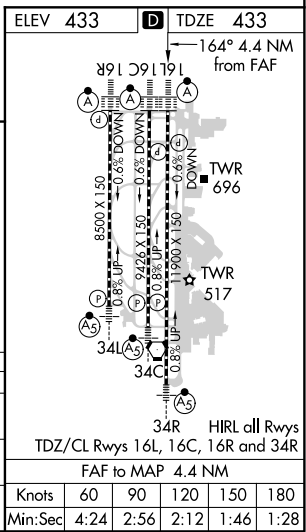
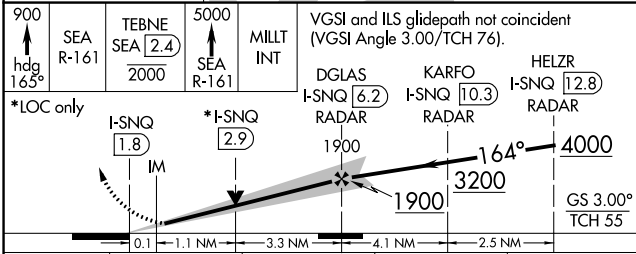
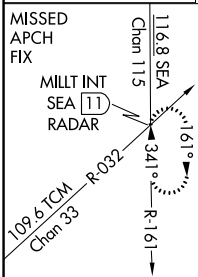
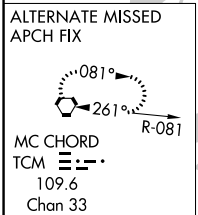
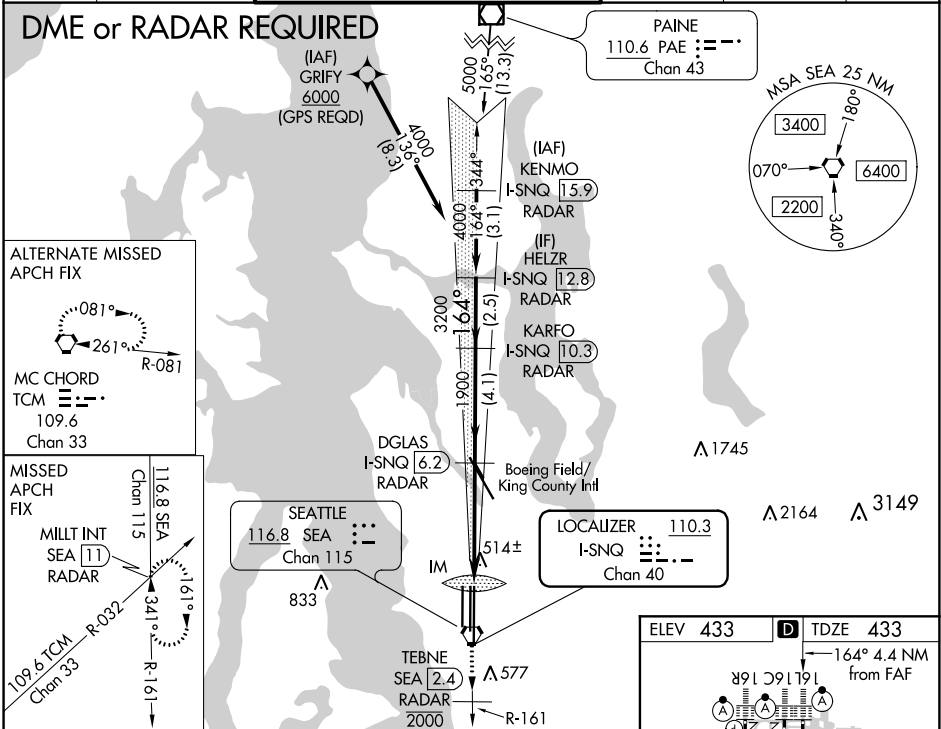
ILS or LOC RWY 16L

SEATTLE-TACOMA INTL (SEA)

Simultaneous approach authorized with Rwy 16R. DME or RADAR required. For inop ALS, increase S-ILS 16L Cat A visibility to RVR 4500, and Cats B,C,D to RVR 4000.

ALSF-2
MISSED APPROACH: Climb to 900 on heading 165° then on SEA VORTAC R-161 to cross TEBNE/SEA 2.4 DME/RADAR at or below 2000 then climb to 5000 on SEA VORTAC R-161 to MILIT INT/SEA 11 DME/RADAR and hold, continue climb-in-hold to 5000.

| | | | | | |
|------------------------|---|--|-------------------------|--------------------------|-------|
| D-ATIS 118.0 | SEATTLE APP CON 133.65 273.45 | SEATTLE TOWER 119.9 239.3 (Rwys 16L, 16C, 34C, 34R) 120.95 239.3 (Rwys 16R, 34L) | GND CON 121.7 | CLNC DEL 128.0 | CPDLC |
|------------------------|---|--|-------------------------|--------------------------|-------|



| | | | | |
|-----------|-------------------------|-----------------------------|-----------------------|---|
| CATEGORY | A | B | C | D |
| S-ILS 16L | 697/20 264 (300-1/2) | 633/18 200 (200-1/2) | | |
| S-LOC 16L | 880/24 447 (500-1/2) | 880/45 447 (500-3/8) | | |
| CIRCLING | 1000-1 567 (600-1) | 1000-1 1/2 567 (600-1/2) | 1000-2 567 (600-2) | |

NW-1, 31 JAN 2019 to 28 FEB 2019

NW-1, 31 JAN 2019 to 28 FEB 2019