

| | | | |
|---|------------------------|-----------------------------|---|
| LOC/DME I-SEA 110.3 Chan 40 | APP CRS 344° | Rwy Idg TDZE Apt Elev | 1900 372 433 |
|---|------------------------|-----------------------------|---|

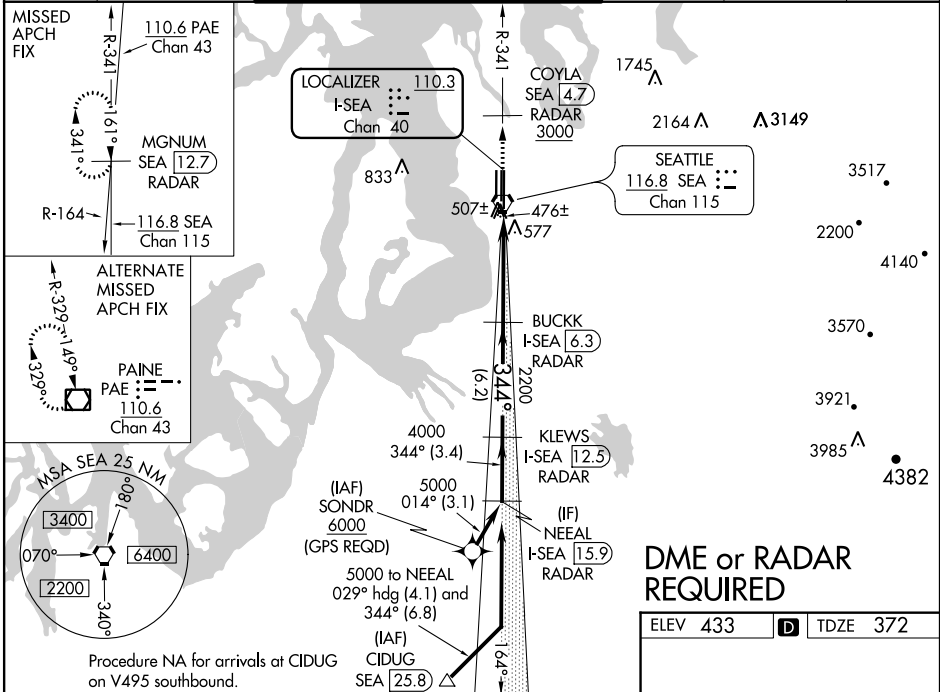
ILS RWY 34R (SA CAT I & II)

SEATTLE-TACOMA INTL (SEA)

▼ DME or RADAR required. Simultaneous approach authorized with Rwy 34L. SA CAT I: Requires specific OPSPEC, MSPEC, or LOA approval and use of HUD to DH. SA CAT II: Reduced lighting: Requires specific OPSPEC, MSPEC, or LOA approval and use of autoland or HUD to touchdown.

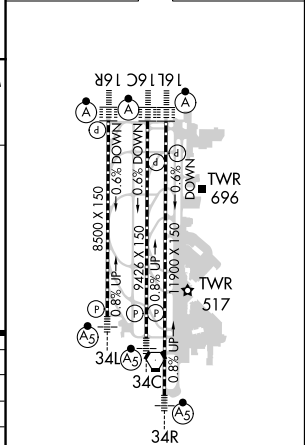
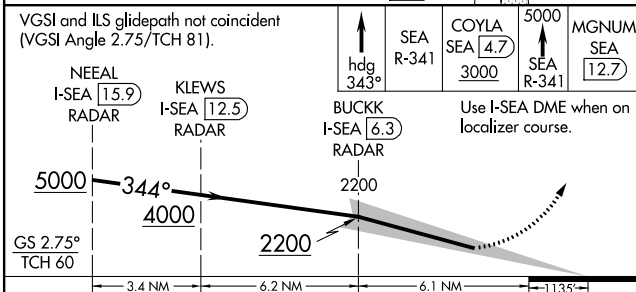
MISSED APPROACH: Climb on heading 343° and outbound SEA VORTAC R-341 to cross COYLA/SEA 4.7 DME/RADAR at or above 3000 then climb to 5000 on SEA VORTAC R-341 to MGNUM/SEA 12.7 DME/RADAR and hold, continue climb-in-hold to 5000.

| | | | | | |
|------------------------|---|--|-------------------------|--------------------------|-------|
| D-ATIS 118.0 | SEATTLE APP CON 133.65 273.45 | SEATTLE TOWER 119.9 239.3 (Rwys 16L, 16C, 34C, 34R) 120.95 239.3 (Rwys 16R, 34L) | GND CON 121.7 | CLNC DEL 128.0 | CPDLC |
|------------------------|---|--|-------------------------|--------------------------|-------|



DME or RADAR REQUIRED

| | | |
|----------|----------|----------|
| ELEV 433 | D | TDZE 372 |
|----------|----------|----------|



| | | | | |
|-----------|-----------|-----------|-----|--------|
| CATEGORY | A | B | C | D |
| S-ILS 34R | SA CAT I | RA 250/14 | 150 | DA 522 |
| S-ILS 34R | SA CAT II | RA 200/12 | 100 | DA 472 |

SA CATEGORY I & II ILS - SPECIAL AIRCREW & AIRCRAFT CERTIFICATION REQUIRED

HIRL all Rwys
TDZ/CL Rwys 16L, 16C, 16R and 34R

NW-1, 31 JAN 2019 to 28 FEB 2019

NW-1, 31 JAN 2019 to 28 FEB 2019