

# ELMAA THREE DEPARTURE

AL-582 (FAA)

SEATTLE-TACOMA INTL (SEA)  
SEATTLE, WASHINGTON

D-ATIS  
118.0  
CLNC DEL  
128.0  
CPDLC  
SEATTLE DEP CON  
120.4 395.0

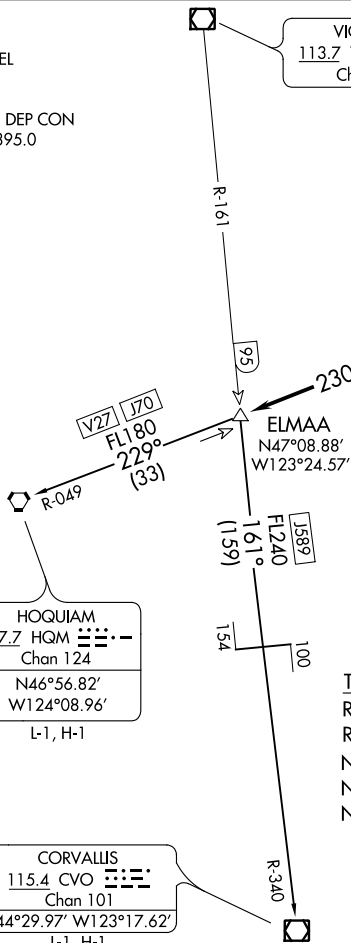
**TOP ALTITUDE:  
ASSIGNED BY ATC**

VICTORIA  
113.7 YYJ  
Chan 84

SEATTLE  
116.8 SEA  
Chan 115

HOQUIAM  
117.7 HQM  
Chan 124  
N46°56.82'  
W124°08.96'  
L-1, H-1

CORVALLIS  
115.4 CVO  
Chan 101  
N44°29.97' W123°17.62'  
L-1, H-1



### TAKEOFF MINIMUMS

Rwys 34L/C/R: NA.

Rwys 16L/C/R: Standard.

NOTE: Rwy 16L: Minimum climb of 560' per NM to 3000.

NOTE: Rwy 16C: Minimum climb of 515' per NM to 3000.

NOTE: Rwy 16R: Minimum climb of 500' per NM to 3000.

NOTE: RADAR and DME required.

NOTE: Chart not to scale.

### DEPARTURE ROUTE DESCRIPTION

TAKEOFF RUNWAY 16L: Climb heading 165° and SEA R-161, thence. . .

TAKEOFF RUNWAYS 16C, 16R: Climb heading 161° and SEA R-161, thence. . .

. . . to cross NICHY/5 DME/RADAR at or above 3000, then right turn heading 251° to intercept SEA R-230 to ELMAA INT, then on (transition/assigned route), expect requested altitude/flight level 15 NM from SEA.

CORVALLIS TRANSITION (ELMAA3.CVO): From over ELMAA on YYJ R-161 and CVO R-340 to CVO VOR/DME.

HOQUIAM TRANSITION (ELMAA3.HQM): From over ELMAA on HQM R-049 to HQM VORTAC.

NW-1, 31 JAN 2019 to 28 FEB 2019

NW-1, 31 JAN 2019 to 28 FEB 2019