

AIRPORT DIAGRAM

AL-582 (FAA)

SEATTLE-TACOMA INTL (SEA)
SEATTLE, WASHINGTON

D-ATIS
118.0
SEATTLE TOWER
119.9 239.3
(RWYS 16L, 16C, 34C, 34R)
120.95 239.3
(RWY 16R, 34L)
GND CON
121.7
CLNC DEL
128.0
CPDLC

CAUTION:
Pilots are cautioned not to mistake Twy T for a landing surface.

Runway Status Lights in Operation

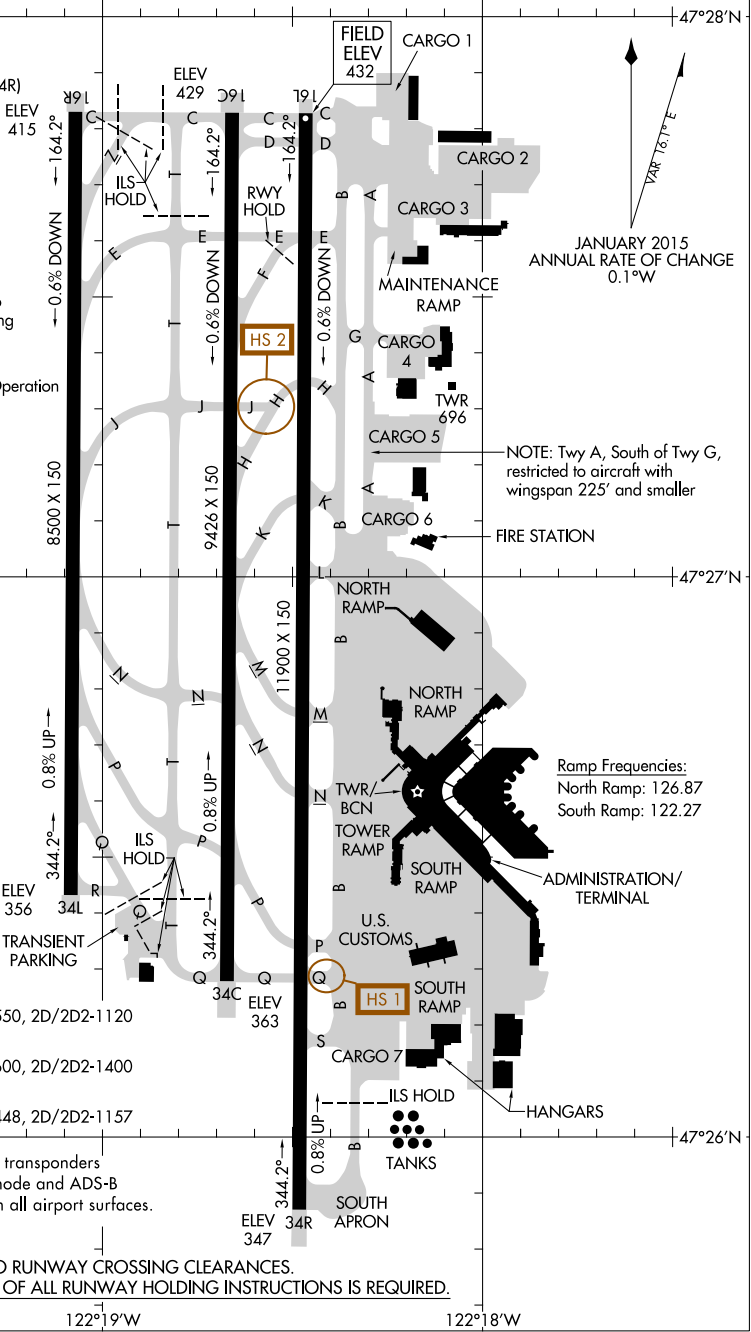
RWY 16C-34C
PCN 96 R/B/W/T
S-120, D-250, 2D-550, 2D/2D2-1120

RWY 16L-34R
PCN 110 R/B/W/T
S-100, D-230, 2D-600, 2D/2D2-1400

RWY 16R-34L
PCN 89 R/B/W/T
S-100, D-216, 2D-448, 2D/2D2-1157

ASDE-X in use. Operate transponders with altitude reporting mode and ADS-B (if equipped) enabled on all airport surfaces.

**CAUTION: BE ALERT TO RUNWAY CROSSING CLEARANCES.
READBACK OF ALL RUNWAY HOLDING INSTRUCTIONS IS REQUIRED.**



JANUARY 2015
ANNUAL RATE OF CHANGE
0.1°W

NOTE: Twy A, South of Twy G, restricted to aircraft with wingspan 225' and smaller

Ramp Frequencies:
North Ramp: 126.87
South Ramp: 122.27

NW-1, 31 JAN 2019 to 28 FEB 2019

NW-1, 31 JAN 2019 to 28 FEB 2019

AIRPORT DIAGRAM

SEATTLE, WASHINGTON
SEATTLE-TACOMA INTL (SEA)