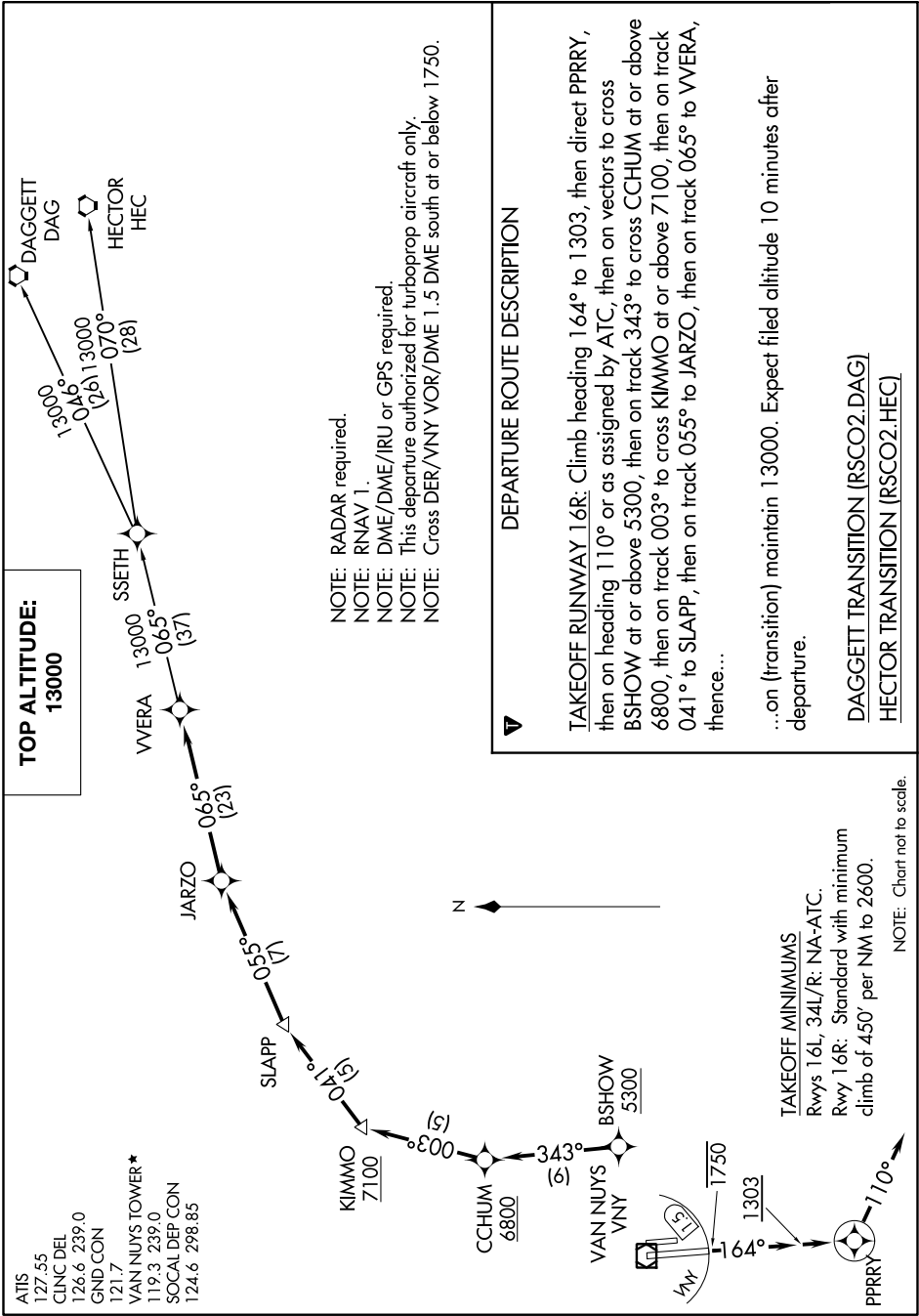


# ROSCOE TWO DEPARTURE(RNAV)

AL-552 (FAA)

VAN NUYS (VNY)  
VAN NUYS, CALIFORNIA

SW-3, 31 JAN 2019 to 28 FEB 2019



**TOP ALTITUDE:  
13000**

ATIS 127.55  
 CLNC DEL 124.6 239.0  
 GND CON 121.7  
 VAN NUYS TOWER\* 119.3 239.0  
 SOCIAL DEP CON 124.6 298.85

NOTE: RADAR required.  
 NOTE: RNAV 1.  
 NOTE: DME/DME/IRU or GFS required.  
 NOTE: This departure authorized for turboprop aircraft only.  
 NOTE: Cross DER/VNY VOR/DME 1.5 DME south at or below 1750.

## DEPARTURE ROUTE DESCRIPTION

**TAKEOFF RUNWAY 16R:** Climb heading 164° to 1303, then direct PRRY, then on heading 110° or as assigned by ATC, then on vectors to cross BSHOW at or above 5300, then on track 343° to cross CCHUM at or above 6800, then on track 003° to cross KIMMO at or above 7100, then on track 041° to SLAPP, then on track 055° to JARZO, then on track 065° to VVERA, thence...

...on (transition) maintain 13000. Expect filed altitude 10 minutes after departure.

DAGGETT TRANSITION (RSCO2.DAG)  
HECTOR TRANSITION (RSCO2.HEC)

**TAKEOFF MINIMUMS**  
 Rwy 16L, 34L/R: NA-ATC.  
 Rwy 16R: Standard with minimum climb of 450' per NM to 2600.

NOTE: Chart not to scale.

# ROSCOE TWO DEPARTURE(RNAV)

(RSCO2.WERA) 24MAY18

VAN NUYS, CALIFORNIA  
VAN NUYS (VNY)

SW-3, 31 JAN 2019 to 28 FEB 2019