

OMAHA, NEBRASKA

TACAN Y RWY 30

TACAN OFF Chan 54	APCH CRS 313°	Rwy ldg 10,612 TDZE 985 Arprt Elev 1049
--------------------------	----------------------	--

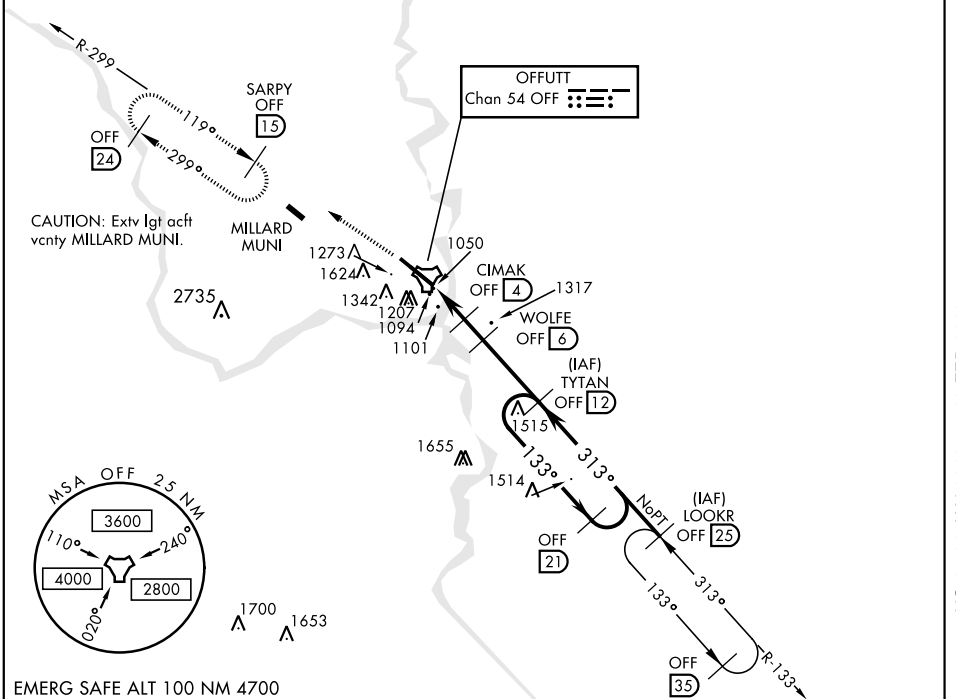
AL-544 [USAF]

OFFUTT AFB (KOFF)

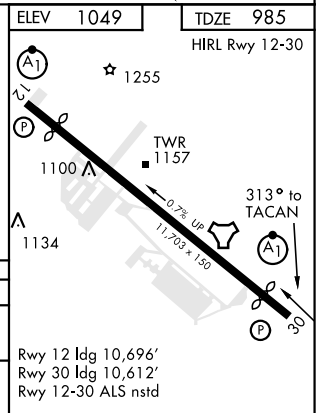
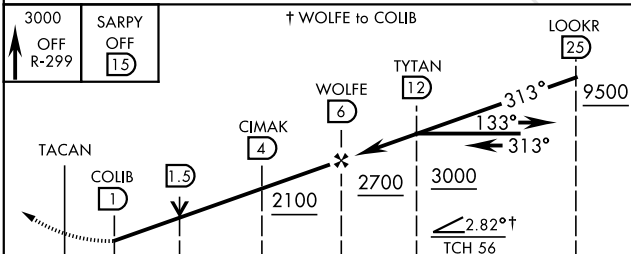
<p>▼ * When ALS inop, increase CAT ABCDE RVR to 55 and vis to 1 mile. ** Circling not authorized N of Rwy 12-30.</p>	<p>ALSF-1 A1</p>	<p>MISSED APPROACH: Climb to 3000 via OFF TACAN R-299 to SARPY and hold.</p>
--	----------------------	--

<p>ATIS 126.025 273.5</p>	<p>OMAHA APP CON E 124.5 263.0 W 120.1 354.05</p>	<p>OFFUTT TOWER 123.7 279.625</p>	<p>GND CON 121.7 289.4</p>
--------------------------------------	---	--	---------------------------------------

CAUTION: When Rwy 12 VGSI inop, circling to Rwy 12 not authorized at night.



EMERG SAFE ALT 100 NM 4700



CATEGORY	A	B	C	D	E
S-30*	1360/40		375	(400-¾)	
** CIRCLING	1500-1 451 (500-1)	1600-1 551 (600-1)	1680-1¾ 631 (700-1¾)	1940-3	891 (900-3)

Rwy 12 ldg 10,696'
Rwy 30 ldg 10,612'
Rwy 12-30 ALS nstd

OMAHA, NEBRASKA

41°07'N-95°54'W

OFFUTT AFB (KOFF)

Amdt 5 13SEP18

TACAN Y RWY 30

NC-2, 31 JAN 2019 to 28 FEB 2019

NC-2, 31 JAN 2019 to 28 FEB 2019